

# FLOORING TECHNOLOGY

## MACHINES AND TOOLS



# ROLL GMBH - INTRODUCING OURSELVES

Roll GmbH is German leading manufacturer of machines for the removal of floor coverings, machines for surface preparation and machines and tools for the installation of all kind of floor coverings. Furthermore a large assortment of different flooring profiles is offered for a wide range of applications.

Roll GmbH also is the Roll family and their dedicated team which works with passion for the flooring technology for more than 35 years. Since the company was founded by Dieter and Rosemarie Roll, mile stones were set in the flooring industry e.g. the Bullystripper. The second generation family business has set new standards for the industry in recent years.

The expansion of the research and development department enabled innovation activities aimed at technological leadership, and the history of self-propelled stripper machines with an alternative drive concept and intelligent controls began in 2013 with the introduction of the ROLL-STRIPPER RO-1. Meanwhile, Roll GmbH provides a complete roll stripper family after introducing the ROLL-STRIPPER RO-2 in 2015, the ROLL-STRIPPER RO-3 in 2017 and the ROLL-STRIPPER RO-5 in 2022.

At the same time, the range of floor grinding machines was developed, which sustainably improves the surface processing options for floor layers. After the introduction of the floor grinding machine RO-300 in 2016, the range has been expanded over the years to include the larger floor grinding machine RO-400 and the smaller floor grinding machine RO-250. All machines are manufactured on the in-house assembly line.

The range of tools and machines is rounded off by a system of aluminum floor profiles. Thus, Roll GmbH offers an overall concept for every floor layer.

In order to accommodate the growing product range, a new logistics center with a 3,000 square meter storage, logistics and administration area was opened in the Engstingen-Haid business park on October 1, 2023. The new building offers the 25 employees plenty of space and growth potential for new products and the next generation.

„We not only want to satisfy our customers, we want to fascinate them“ this is what the siblings Beatrice, Stephan and André Roll clearly want to express. This works best with products which convince and furthermore with a remarkable service, these two features make the Roll GmbH successfully all over the world.



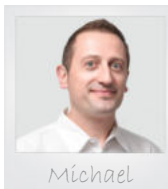
Experience what drives us and get to know our company better!  
In our company film on YouTube

> Click here for the film



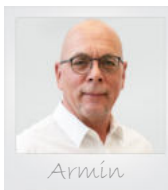
**André Roll**  
Managing Director

Mobile: +49(0)162/9166605  
Phone: +49(0)7128/92 80-24  
Email: andre.roll@roll-gmbh.de



**Michael Dorow**  
Sales Manager Germany  
Sales territory 1: South-West

Mobile: +49(0)162/9166607  
Phone: +49(0)7128/92 80-16  
Email: michael.dorow@rollgmbh.de



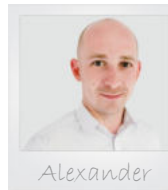
**Armin-Georg Jaschik**  
Sales territory 4: East / North-East

Mobile: +49(0)151/15337427  
Phone: +49(0)7128/92 80-0  
Email: armin.jaschik@roll-gmbh.de



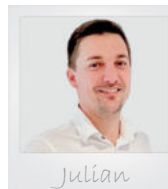
**Maik Oliver Kolcan**  
Sales territory 5: West

Mobile: +49(0)162/1555113  
Phone: +49(0)7128/92 80-0  
Email: maik.kolcan@roll-gmbh.de



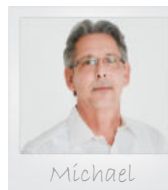
**Alexander Berndt**  
Sales territory 3: Center

Mobile: +49(0)171/4747199  
Phone: +49(0)7128/92 80-0  
Email: alexander.berndt@roll-gmbh.de



**Julian Helchenberg**  
Sales territory 2: South / South-East

Mobile: +49(0)162/5211199  
Phone: +49(0)7128/92 80-0  
Email: julian.helchenberg@roll-gmbh.de



**Michael Wirges**  
Sales territory 6: North-West

Mobile: +49(0)151/22622667  
Phone: +49(0)7128/92 80-0  
Email: michael.wirges@roll-gmbh.de



**Nils Harder**  
Sales territory 7: North

Mobile: +49(0)171/6984721  
Phone: +49(0)7128/92 80-0  
Email: harder@hv-nord.com

<b>01</b>	<b>FLOOR COVERING REMOVAL</b> Stripper machines, ride-on strippers, self-propelled strippers, carpet strippers, stripper blades, parquet saw, stair climber, hand tools and accessories for flooring removal	02 - 10
<b>02</b>	<b>RENOVATION OF SUBSTRATES</b> Floor grinding machines, hand grinding machines, grinding discs and accessories for renovating surfaces	11 - 19
<b>03</b>	<b>SURFACE PREPARATION</b> Single disc machines, dust extraction, discs for single-disc machines, grinding discs and accessories for surface preparation	20 - 27
<b>04</b>	<b>PARQUET SANDING TECHNOLOGY</b> Parquet sanding machines, multi-disc machines, edge sanding machines, sanding discs and accessories for parquet sanders	28 - 32
<b>05</b>	<b>DUST EXTRACTION TECHNOLOGY</b> Construction vacuum cleaners, industrial vacuum cleaners, dust pre-separators, air purifiers, accessories for construction vacuum cleaners	33 - 38
<b>06</b>	<b>HAND TOOLS FOR SURFACE PREPARATION</b> Scrapers, spatulas, edge sanding blocks, hand grinding stones	39
<b>07</b>	<b>INSTALLING FLOOR COVERINGS</b> Installation tools for linoleum, carpets, parquet, machines and tools for welding of elastic floor coverings, joint cutters, hot air welders, pressure rollers, squeegees, serrated spatulas	40 - 56
<b>08</b>	<b>MOISTURE METERS</b> CCM moisture meters, moisture testers, air temperature and humidity meters, steel rulers	57 - 59
<b>09</b>	<b>ABRASIVES</b> Sanding discs for single-disc machines, sanding grids, sanding belts and sanding discs for parquet and edge sanding machines, cleaning and sanding pads	60 - 64
<b>10</b>	<b>CUTTING TOOLS</b> Blades, knives, scissors, cutters	65 - 68
<b>11</b>	<b>MIXERS</b> Mixers, mixing tools, mixer holder, mixing station	69 - 70
<b>12</b>	<b>FASTENING TECHNOLOGY</b> Assembly adhesive, spray adhesive, steel pins, screed clips	71 - 72
<b>13</b>	<b>PERSONAL PROTECTIVE EQUIPMENT</b> Knee pads, respirators	73
<b>14</b>	<b>FLOOR PROTECTION MATS</b> Polycarbonate chair mats	74



# STRIPPER MACHINES

FOR REMOVAL OF FLOORING COVERINGS





# STRIPPER MASCHINES



## ROLL-STRIPPER RO-1.1

17.11000

Compact ride-on stripper for professional removal of all extremely bonded floor coverings on medium and large areas.

### Special features:

- For medium and large areas
- Stepless speed control up to 37 m / min
- Maximum efficiency by the striking mechanism
- Stepless working angle for optimal use on different floor coverings and surfaces
- High contact pressure of the stripper tool by additional lifting motor
- High torque (double torque of the proven RO-2 stripper)
- Very smooth running thanks to large drive wheels (400mm)
- Effortless work by comfortable joystick control
- Quiet operation by industrial electric motors (85 dB (A))
- Very manoeuvrable and compact

### Areas of application:

- Removal of parquet
- Removal of ceramic tiles
- Removal of elastic floor coverings
- Removal of textile floor coverings
- Removal of PVC floor coverings
- Removal of sports floor coverings

### Included in delivery:

- Stripper-tool 350mm flat
- Stripper-tool 350mm U-shape
- 10m industrial extension cable
- Tool set
- Personal protective equipment

### Technical specifications:

Drive engines left/right: each 1,5 kW, 230 volts  
Torque: 654 Nm  
Adjustable speed: up to 37 m / min  
Stroke engine: 1,1 kW, 230 volts  
Blow count: 2000 beats per minute (bpm)  
Lifting motor: 8600 N nominal force  
Adjustable working angle: up to 40°  
Working width: 120 / 250 / 300 / 350 mm  
Dimensions: 1050 x 600 x 1100 mm  
Weight: 528 kg, modular construction



## STRIPPER-TOOL 250x80x2mm FLAT

17.18400

## STRIPPER-TOOL 350x80x2mm FLAT

17.18420

## STRIPPER-TOOL 350x80x2mm U-FORM A

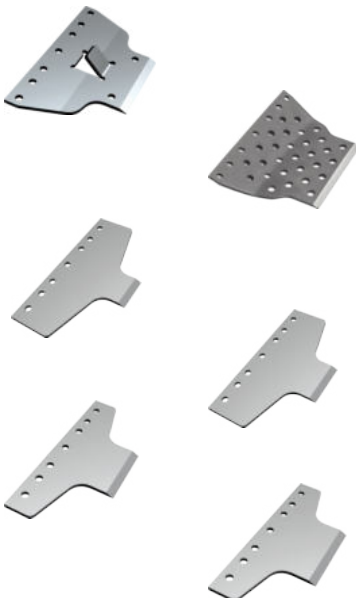
17.18450

Bevel up

## STRIPPER-TOOL 350x80x2mm U-FORM B

17.18460

Bevel down



## STRIPPER-TOOL 250x150x6mm FOR PARQUET

17.18588

Special tool, flat pressure angle

## STRIPPER-TOOL 250x180x6mm FOR PARQUET

17.18589

Special tool, medium pressure angle

## STRIPPER-TOOL 60mm

17.18592

For removal parquet and tiles

## STRIPPER-TOOL 80mm

17.18594

For removal parquet and tiles

## STRIPPER-TOOL 100mm

17.18596

For removal parquet and tiles

## STRIPPER-TOOL 120mm

17.18598

For removal parquet and tiles

# ROLL-STRIPPER MACHINES

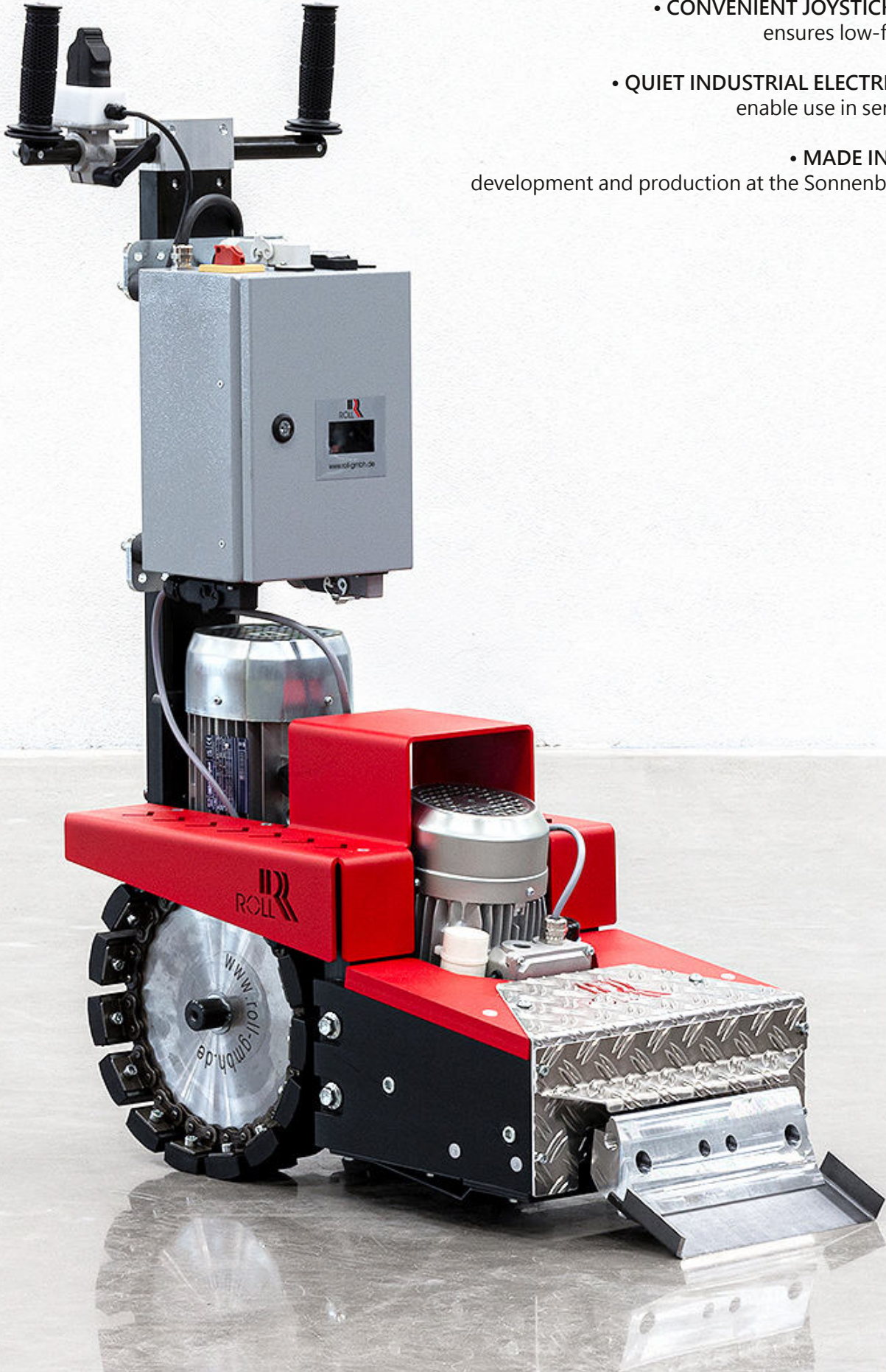
## STRIPPER MACHINES WITH DRIVE

- INNOVATIVE DRIVE CONCEPT WITH CHAIN WHEELS  
prevents the wheels from spinning

- CONVENIENT JOYSTICK CONTROL  
ensures low-fatigue work

- QUIET INDUSTRIAL ELECTRIC MOTORS  
enable use in sensitive areas

- MADE IN GERMANY  
development and production at the Sonnenbühl location





# STRIPPER MACHINES



## ROLL-STRIPPER RO-2

17.18000

The ROLL-STRIPPER RO-2 is a compact stripper machine with chain drive for professional removal of bonded floor coverings such as parquet, carpeting, linoleum, PVC and vinyl.

- powerful industrial motors
- innovative drive technology
- innovative tool technology
- joystick operation
- low vibration and noise level
- easy to transport

### Technical specifications:

Drive engine: 1,5 kW, 230 volts with worm gear  
Torque: 327 Nm

Stroke engine: 1,1 kW, 230 volts  
Blow count: 2500 beats per minute (bpm)

Stroke length: adjustable in 3 levels

Working width: up to 350 mm

Dimensions: 380 x 760 x 1100 mm

Weight: 195 kg

### Included in delivery:

- Stripper-tool 250mm flat
- Stripper-tool 250mm U-shape
- 10m industrial extension cable
- Tool kit
- Carrying handles
- Personal protective equipment
- Transport wheels

## STRIPPER-TOOL 250x80x2mm FLAT

17.18400

## STRIPPER-TOOL 350x80x2mm FLAT

17.18420

## STRIPPER-TOOL 250x80x2mm U-FORM A

17.18430

Bevel up

## STRIPPER-TOOL 250x80x2mm U-FORM B

17.18440

Bevel down

## STRIPPER-TOOL 350x80x2mm U-FORM A

17.18450

Bevel up

## STRIPPER-TOOL 350x80x2mm U-FORM B

17.18460

Bevel down

## STRIPPER-TOOL 250x60x2mm U-FORM A

17.18520

Steeper angle

## STRIPPER-TOOL 250x80x1,5mm FLAT

17.22300

## STRIPPER-TOOL 250x80x1,5mm U-FORM A

17.22330

Bevel up

## STRIPPER-TOOL 250x80x1,5mm U-FORM B

17.22340

Bevel down

## STRIPPER-TOOL 250x70x2mm

17.18475

Working width 100mm

## STRIPPER-TOOL 250x150x6mm FOR PARQUET

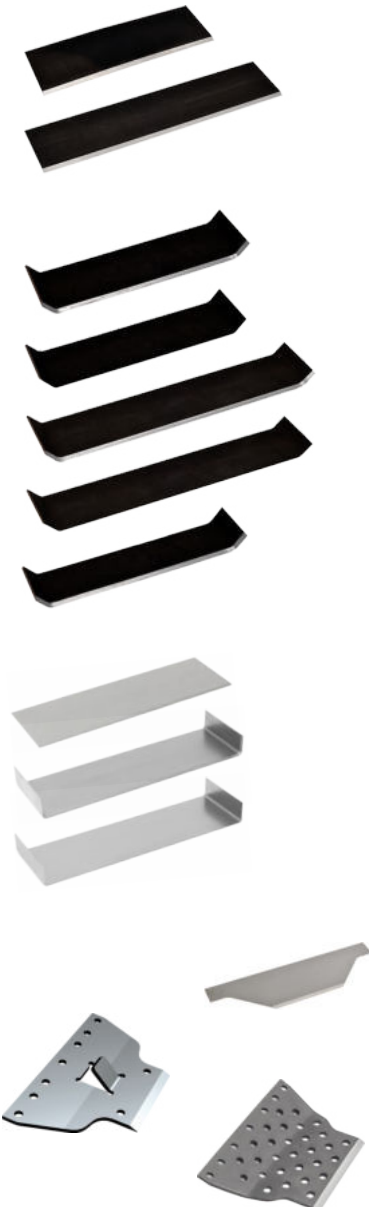
17.18588

Special tool, steep pressure angle

## STRIPPER-TOOL 250x180x6mm FOR PARQUET

17.18589

Special tool, medium pressure angle



# STRIPPER MACHINES



## ADDITIONAL WEIGHT FOR RO-2

43.00303

11,5 kg. Incl. damping pad and screw set.  
Per machine max. 4 pieces.



## CARRYING AID FOR RO-2

43.00444

For a simplified loading, unloading and transport over stairs.  
Set of 2 pieces



## CARRYING HANDLE WITH RUBBER HANDLE

43.00436

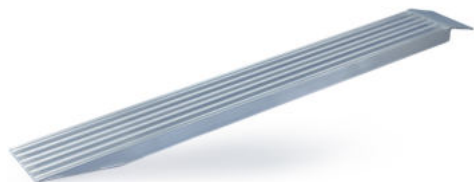
Price per piece



## DRIVING AID FOR RO-2 AND RO-3

47.00580

With castors for easy transport to the job site



## RAMP 240x2000mm

17.17750

For loading of heavy equipment into vans. With non-slip profile.  
Capacity: 1000 kg / pair.

Set of 2 pieces



## RAMP 250x2500mm FOLDABLE

17.17760

For loading of heavy equipment into vans. With non-slip profile.

Length: 2,5m (1,25m folded)  
Width: 250mm  
Capacity: 550 kg/pair

Set of 2 pieces



## PRE-CUTTER RO-STRIPMASTER

17.18900

Perfect tool for pre-cutting strips of resilient and textile floor coverings as preparatory work before removing the floor covering.

Adjustable working angle and adjustable handles allow ergonomic working while standing.

Works with a standard hook blade.  
Blade change without tools.



# STRIPPER MACHINES

## Der ROLL-STRIPPER RO-3

17.19000

The ROLL-STRIPPER RO-3 is a compact stripper machine with chain drive for professional removal of bonded floor coverings such as carpeting, linoleum, PVC and vinyl. The large transport wheels allow transport by 1 person. This makes the new ROLL-STRIPPER RO-3 the ideal companion for all installation companies.

- fast and easy transport to the place of use with pneumatic transport wheels
- transportable by 1 person
- effortlessly working with the stepless joystick control
- use in noise sensitive areas due to low vibration and noise level
- compact and manoeuvrable
- powerful through the use of industrial motors
- effective on different floor coverings with infinitely adjustable working angle

### Technical specifications:

Drive engine: 1,1 kW, 230 volts with worm gear

Torque: 200 Nm

Stroke engine: 1,1 kW, 230 volts

Blow count: 2500 beats per minute (bpm)

Stroke length: adjustable in 3 levels

Working angle: stepless adjustable from 18° to 32°

Working width: up to 300 mm

Dimensions: 315 x 670 x 1100 mm

Weight: 123 kg

Included in delivery:

- Stripper-tool 200mm flat
- Stripper-tool 200mm U-shape
- 10m industrial extension cable
- Tool kit
- Carrying handles
- Personal protective equipment
- Transport wheels with pneumatic tires

Optionally available with drive wheel

## ADDITIONAL WEIGHT FOR RO-3

47.00333

7,5 kg. Incl. damping pad and screw set.

Per machine max. 3 pieces.

## CARRYING AID FOR RO-3

47.00555

For a simplified loading, unloading and transport over stairs.

Set of 2 pieces

## CARRYING HANDLE WITH RUBBER HANDLE

43.00436

Price per piece

## DRIVING AID FOR RO-2 AND RO-3

47.00580

With castors for easy transport to the job site

## STRIPPER-TOOL 200x80x2mm FLAT

17.19620

## STRIPPER-TOOL 150x80x2mm U- FORM A

17.19615

Bevel up

## STRIPPER-TOOL 150x80x2mm U- FORM B

17.19616

Bevel down

## STRIPPER-TOOL 200x80x2mm U- FORM A

17.19640

Bevel up

## STRIPPER-TOOL 200x80x2mm U- FORM B

17.19645

Bevel down

## STRIPPER-TOOL 250x80x1,5mm FLAT

17.22300

## STRIPPER-TOOL 250x80x1,5mm U-FORM A

17.22330

Bevel up

## STRIPPER-TOOL 250x80x1,5mm U-FORM B

17.22340

Bevel down

# STRIPPER MACHINES



## ROLL-STRIPPER RO-5

17.25000

The ROLL-STRIPPER RO-5 is a compact stripper machine for professional removal of bonded floor coverings such as carpeting, linoleum, PVC and vinyl.

The ROLL-STRIPPER RO-5 can be dismantled in two parts for transport. The large transport wheels allow transport by 1 person. This makes the new ROLL-STRIPPER RO-5 the ideal companion for all installation companies.

- fast and easy transport to the place of use with pneumatic transport wheels
- transportable by 1 person
- effortlessly working with the stepless joystick control
- use in noise sensitive areas due to low vibration and noise level
- compact and manoeuvrable
- powerful through the use of industrial motors
- effective on different floor coverings with infinitely adjustable working angle

### Technical specifications:

Drive engine: 0,75 kW, 230 volts with worm gear

Torque: 145 Nm

Stroke engine: 0,75 kW, 230 volts

Blow count: 2800 beats per minute (bpm)

Working angle: stepless adjustable from 20° to 40°

Working width: up to 300 mm

Dimensions: 305 x 640 x 1080 mm

Weight: 95 kg

Included in delivery:

- Stripper-tool 200mm flat
- 10m industrial extension cable
- Tool kit
- Personal protective equipment
- Transport wheels

Illustration shows device with optionally mounted additional weights!

## ADDITIONAL WEIGHT FOR RO-5

17.25910

6 kg

## STRIPPER-TOOL 200x80x2mm FLAT

17.19620

## STRIPPER-TOOL 150x80x2mm U- FORM A

17.19615

Bevel up

## STRIPPER-TOOL 150x80x2mm U- FORM B

17.19616

Bevel down

## STRIPPER-TOOL 200x80x2mm U- FORM A

17.19640

Bevel up

## STRIPPER-TOOL 200x80x2mm U- FORM B

17.19645

Bevel down



# STRIPPER MACHINES



## PARQUET SAW RO-4

17.19700

Indispensable for the dismantling of parquet!

With the parquet saw RO-4, the parquet is pre-cut very quickly and in an upright position. You optimize the preparatory work for dismantling in order to remove parquet even faster and more effectively with the ROLL-STRIPPERS.

- very ergonomic use in upright position
- extremely effective with the special saw blade
- simple and safe handling with the lowering mechanism
- adjustable cutting depth from 0 to 22mm
- dust-free working with the integrated dust extraction device

### Technical specifications:

Drive engine: 2200 W, 230 V  
Rotation: 4000 rpm  
Blade: Ø 180 mm  
Cutting depth: 0 mm - 22 mm  
Dimensions: 500 x 280 x 950 mm  
Weight: 31 kg

**NEW** Delivery including diamond saw blade.



## DIAMOND BLADE FOR PARQUET SAW

43.40575

Ø 180 mm

## CARBIDE BLADE FOR PARQUET SAW

43.40555

Ø 180 mm



## STAIRCLIMBER CARGOMASTER TYPE CC160

17.17900

Lifting capacity 160 kg, speed 12-25 steps/minute.

The CC160 stair climber is the right choice when it comes to medium-heavy or bulky loads. Its low weight and easy handling make the CargoMaster an indispensable tool.

### Advantages

- Safe transport, up to 160 kg over stairs
- Step edge braking system
- ComfortStep for gentle climbing
- Single step switching
- Multi-level battery indicator

### Technical specifications:

Lifting capacity: 160 kg  
Weight with quick-change battery: 28,9 kg  
Height | width | Depth in mm: 1065-1490 | 446 | 300  
Range on one battery charge: 8-25 floors  
Rate of climb: 12- 25 steps per minute  
(rate of climb and range may decrease as load increases)

### Delivery:

Stair climber CargoMaster Typ CC160 , 1 battery, 1 charger,  
platform size 400x440x8mm, tension belt

## QUICK-CHANGE BATTERY

17.17910

For stairclimber CargoMaster Type CC160



# STRIPPER MACHINES



Use without handle



## ROLL BULLYSTRIPPER WITH T-HANDLE

17.14575

The ROLL-Bullystripper with T-handle is a hand-held scraper machine for removal old floor coverings like carpet, linoleum and pvc.

2 in 1: a multi-purpose machine for larger areas as well as small fields which are difficult to reach like stairs and niches. Top cost/performance ratio!

Bullystripper comes with carrier with wheels to protect the engine and for more comfortable work.

Standard blade 60x210mm included.

### Technical specifications:

Power: 2200 W, 230 V

Weight: 14,5kg

Working width: 210mm

## BLADE FOR BULLYSTRIPPER

17.14580

Standard blade 60x210mm for universal use

## BLADE FOR BULLYSTRIPPER

17.14582

Standard blade 60x210mm for universal use

Pack of 10 units

## BLADE FOR BULLYSTRIPPER "PLUS"

17.14581

Special blade 60x210mm hardened, 1,5mm thick, with higher wear resistance

## U-BLADE FOR BULLYSTRIPPER

17.14592

60mmx210mm with U-shape 45° bending.

Self-cutting for soft floor coverings.

## JUMBO BLADE FOR BULLYSTRIPPER

17.14595

With anti-stick coating (Teflon) and waved cut, ideal for carpets with felt back, PVC and lino. 210mm.

## BLADE FOR BULLYSTRIPPER

17.14590

130x210mm for soft floor coverings.

## BLADE FOR HANDSTRIPPER

17.14511

Standard blade 145mm, trapezium, for universal use

## BLADE FOR HANDSTRIPPER "PLUS"

17.14512

Special blade 108mm hardened, 1,5mm thick, with higher wear resistance

## CARPET CLAMP DE LUXE

17.14630

With the carpet clamp "de luxe" weakly bonded or only fixed floor coverings can be removed manually.

By pulling on the ergonomic handle, the floor covering is clamped in the toothed clamping device. Made from a special aluminum alloy.

The must-have for every floor layer, in addition to the stripper machines!



# ROLL-FLOOR GRINDING MACHINES

FOR EFFICIENT SURFACE PREPARATION

- **HIGH AREA PERFORMANCE**  
thanks to high speed and torque

- **LOW-DUST WORK**  
with the integrated dust extraction system

- **QUIET INDUSTRIAL ELECTRIC MOTORS**  
enable use in sensitive areas

- **MADE IN GERMANY**  
development and production at the Sonnenbühl location



# FLOOR GRINDING MACHINES



## FLOOR GRINDING MACHINE RO-400

17.15840

The ROLL floor grinding machine RO-400 was developed for surface preparation in industrial and commercial properties. With the powerful three-phase motor, you can easily carry out any surface preparation works.

- high performance through a 400mm diameter
- powerful 4.0 kW three-phase motor
- direct-drive mechanism
- operating hours counter
- effortlessly working due to the smooth running of the machine and adjustable drawbar
- easy transport due to compact dimensions and a foldable drawbar
- dustfree working with the integrated dust extraction device

### Technical specifications:

Working power: 4,0 kW / 400 V  
Rotation: 1450 rpm  
Weight: 79 kg  
Working width: 400 mm



## FLOOR GRINDING MACHINE RO-300

17.16800

The ROLL floor grinding machine RO-300 sets new standards in surface preparation. Whether removing floor covering residues, adhesive residues, leveling compounds or floor coatings - regardless of what you find after removing the floor covering - with the floor grinding machine RO-300 you can prepare the surface quickly and effectively.

- soft start and low power consumption, therefore no triggering of fuses on weakly secured construction sites
- effortlessly working due to the smooth running of the machine
- dust-free working with the integrated dust extraction device
- easy transport due to compact dimensions and a foldable drawbar
- individual billing with the integrated hour meter
- long service life and effectiveness of the tools Made in Germany

### Technical specifications:

Working power: 2200 W / 230 V  
Rotation: 1650 rpm  
Weight: 63 kg  
Working width: 300 mm

## FLOOR GRINDING MACHINE RO-300 DIRECT DRIVE

17.16900

As previously described, but with a direct driven 400 volt motor.

### Technical specifications:

Working power: 3,0 kW / 400 V  
Rotation: 1410 rpm  
Weight: 62 kg



## FLOOR GRINDING MACHINE RO-250

17.10250

The ROLL floor grinding machine RO-250 is a compact grinding machine for surface preparation on small to medium-sized areas. For removing any residues after removing floor coverings such as adhesives, leveling compounds, coatings and much more.

- high power and area performance
- easy transport through the foldable drawbar
- can be used very well in the edge area by adjusting the drawbar
- dust-free work with the integrated dust extraction device

### Technical specifications:

Working power: 1800 W / 230V  
Rotation: 1450 rpm  
Weight: 49 kg  
Working width: 250 mm



# FLOOR GRINDING MACHINES



Made in Germany

## DIAMOND DISC "V12"

Diamond disc for grinding work on mineral surfaces. For sanding screeds and fillers, sanding loose fillers and thin, non-smearing adhesive layers.

Ø 400mm grit 30/40  
Ø 400mm grit 30/40 (soft bond)

Ø 300mm grit 30/40 (red)  
Ø 300mm grit 30/40 (hard bond)  
Ø 300mm grit 30/40 (soft bond)  
Ø 300mm grit 60/80 (salmon red)  
Ø 300mm grit 100/120 (white)

Ø 250mm grit 30/40  
Ø 250mm grit 30/40 (hard bond)  
Ø 250mm grit 30/40 (soft bond)

Ø 160mm

17.15875  
17.15859

17.16875  
17.16832  
17.16859  
17.16876  
17.16877

17.10275  
17.10243  
17.10254

17.16895



## DIAMOND DISC "V10"

Diamond disc for grinding work on mineral surfaces. For sanding screeds and fillers, sanding loose fillers and thin, non-smearing adhesive layers.

Ø 300mm  
Ø 250mm

17.16841  
17.10241



Made in Germany

## PCD-DISC "PCD-TRAPECIUM"

PCD milling disc with trapezoidal PCD segments and support segments for removing floor coatings, paints, all types of adhesives and sealants (such as epoxy resin, polyurethane and acrylic), as well as for milling off levelling compound.

Ø 400mm  
Ø 300mm  
Ø 250mm

17.15894  
17.16868  
17.10268



Made in Germany

## PCD-DISC "PRO+ TRAPECIUM"

PCD milling disc with half round PCD segments, trapezoidal PCD segments and support segments for removing all types of adhesives, as well as for milling off fillers, tile adhesives and coatings. Combination of PCD trapezoid and PCD PRO disc. High effectiveness combined with aggressiveness and longevity.

Ø 400mm  
Ø 300mm

17.15895  
17.16865



Made in Germany

## PCD-DISC "PRO"

PCD milling disc with PCD segments and support segments for removing all types of adhesives and for milling off fillers, tile adhesives and coatings. Particularly aggressive and durable due to the size and arrangement of the PCD segments.

Ø 400mm  
Ø 300mm  
Ø 250mm  
Ø 160mm

17.15880  
17.16880  
17.10292  
17.16896



## PCD-DISC "K8"

PCD disc with PCD grit segments for grinding work on mineral surfaces and for removing thin adhesive films and coatings.

Ø 300mm  
Ø 250mm

17.16844  
17.10244

# FLOOR GRINDING MACHINES



## PCD-DISC "CR9"

PCD disc with PCD grit segments for grinding work on mineral surfaces and for removing thin adhesive films and coatings.

- Ø 400mm
- Ø 300mm
- Ø 250mm
- Ø 160mm

- 17.15889
- 17.16889
- 17.10289
- 17.16897



## POLISHING DISC

Polishing disc with 6 velcro fasteners for diamond polishing pads 75mm. For dry polishing of concrete, screed, terrazzo, natural stone, porcelain stoneware, granite and marble.

- Ø 400mm
- Ø 300mm

- 17.15950
- 17.16950



## REPLACEMENT VELCRO SELF-ADHESIVE

For polishing disc

- 17.16951

## DIAMOND POLISHING PADS Ø 75mm

Resin diamond polishing pads for universal use for dry polishing and perfect fine sanding. Long service life due to high diamond content.

- Grit 60
- Grit 120
- Grit 220
- Grit 400
- Grit 800
- Grit 1500

- 17.16960
- 17.16962
- 17.16964
- 17.16966
- 17.16968
- 17.16970



## HOSE AND CABLE HOLDER

The hose and cable holder is a useful accessory for our floor grinding machines RO-300 and RO-400 to fix the suction hose and connection cable to the drawbar of the machine.

- 27.20526

# HANDHELD GRINDING MACHINES

## HANDY GRINDING MACHINES FOR ALL SURFACES

- **POWERFUL MOTORS**  
with high torque
- **LOW-DUST WORK**  
with the integrated dust extraction system
- **OPTIONAL CHASSIS**  
for better handling and long-term relaxed work
- **WIDE RANGE OF APPLICATIONS**  
for all sanding work from substrates to parquet
- **MADE IN GERMANY**  
development and production at the Sonnenbühl location





# HANDHELD GRINDING MACHINES



## HAND GRINDING MACHINE RO-125

19.14781

Application: universally applicable, ideal for edge areas and on stairs.  
For all subfloor works with a wide range of accessories. Including vacuum attachment for the connection of an external industrial vacuum cleaner.

### Technical specifications:

Working power: 1530 W  
Rotation: 3400-8000 rpm stepless  
Weight: 4,5 kg  
Working width: 125 mm

Delivery in metal carrying case.  
Delivery without diamond disc.



## DIAMOND DISC "FORGED"

19.14333

Ø 125 mm with special forged segments inductively welded.  
Applications: Concrete, abrasive concrete, screed and spackle.



## DIAMOND DISC "Z-SEGMENT FORGED"

19.14336

Ø 125 mm with forged diamond segments in a Z arrangement for grinding work on mineral surfaces.  
For leveling surfaces.



## DIAMOND DISC "R-SEGMENT"

19.14337

Ø 125 mm with forged diamond segments in a R arrangement for grinding work on mineral surfaces.  
For leveling surfaces.



## HYBRID DISC

17.16469

Ø 125 mm with poly-crystalline diamond cutters (PCD) and diamond segments.  
Universal disc to remove coatings, paintings, all kinds of adhesives and sealings as well as for milling of leveling compounds and tile adhesive



## PCD-DISC "PRO"

17.16485

Ø 125 mm with poly-crystalline diamond cutters (PCD) and PCD supporting elements.

To remove thick coatings and paintings, rough remainders of adhesives and sealings (e.g. epoxy resin, polyurethane, and acrylate). The PCD supporting elements prevent a deep engagement of PCD cutters.

Extremely long service life due to very high PCD proportion!



## DIAMOND DISC FOR WOOD

17.16486

Ø 125 mm to remove very hard and lubricating coatings on wooden floors.



## DIAMOND DISC 130mm x 25mm

17.16484

Special size 130mm x 25mm mounting hole for Festool renovation grinder.  
Includes reduction ring to 22.2mm mounting hole for common angle grinders.

Areas of application: for concrete, abrasive concrete, screed, filler.



## SANDING FRAME FOR RO-125

24.70410

For better handling and long-term relaxed work.  
The correct working angle is set with 2 height-adjustable castors.

## WOOD SANDING KIT FOR RO-125

24.70400

Application as edge sander. Including: Velcro sanding disc Ø 125mm for velcro sanding discs and a sanding frame with 2 height adjustable castors.

# HANDHELD GRINDING MACHINES



## HAND GRINDING MACHINE RO-180

19.14870

Universally applicable for all subfloor works with a wide range of accessories. Including vacuum attachment for the connection of an external industrial vacuum cleaner.

### Technical specifications:

Working power: 2600 W

Rotation: 6500 rpm

Weight: 9,3 kg

Working width: 180 mm

Delivery in metal carrying case.

Delivery without diamond disc.



## DIAMOND DISC "FORGED"

19.14814

Ø 180 mm with special forged segments inductively welded.

Applications: Concrete, abrasive concrete, screed and spackle.



## DIAMOND DISC "Z-SEGMENT FORGED"

19.14835

Ø 180 mm with forged diamond segments in a Z arrangement for grinding work on mineral surfaces.

For leveling surfaces..



## HYBRID DISC

19.14815

Ø 180 mm with poly-crystalline diamond cutters (PCD) and diamond segments.

Universal disc to remove coatings, paintings, all kinds of adhesives and sealings as well as for milling of leveling compounds and tile adhesives.



## PCD-DISC "PRO"

19.14803

Ø 180 mm with poly-crystalline diamond cutters (PCD) and PCD supporting elements.

To remove thick coatings and paintings, rough remainders of adhesives and sealings (e.g. epoxy resin, polyurethane, and acrylate). The PCD supporting elements prevent a deep engagement of PCD cutters.

Extremely long service life due to very high PCD proportion!



## DIAMOND DISC FOR WOOD

19.14816

Ø 180 mm to remove very hard and lubricating coatings on wooden floors.



## SANDING FRAME FOR RO-180

24.70265

Chassis for the hand grinding machine RO-180 (19.14870) for better handling and long-term relaxed work. The correct working angle is set with 2 height-adjustable castors.

# HANDHELD GRINDING MACHINES



## EDGE- AND STAIR SANDER ROMO-125

24.70300

For sanding wooden floors, parquet and cork, along the wall and on stairs. Due to the adjustable cover you can work close to the wall. Including vacuum attachment for the connection of an external industrial vacuum cleaner.

### Technical specifications:

Working power: 1530 W  
Rotation: 3400-8000 rpm stepless  
Weight: 4,7 kg  
Working width: 125 mm

Delivery with velcro sanding disc Ø 125mm for velcro sanding discs and a sanding frame with 2 height adjustable castors.

Delivery in metal carrying case.



## VELCRO SANDING DISC Ø 125mm

27.00393

For hand grinding machine RO-125 | ROMO-125 and angle grinders. Used with Velcro sanding discs 125mm.

## SANDING DISC Ø 125mm

27.00394/1

For hand grinding machine RO-125 | ROMO-125 and angle grinders. Used with sanding discs 125mm. Including nut M14

## SANDING FRAME FOR ROMO-125

24.70410

For better handling and long-term relaxed work. The correct working angle is set with 2 height-adjustable castors.

## WOOD SANDING KIT FOR ROMO-125

24.70400

Application as edge sander. Including: Velcro sanding disc Ø 125mm for velcro sanding discs and a sanding frame with 2 height adjustable castors.



## EDGE SANDER ROMO-180 junior

24.70201

For sanding wooden floors, parquet and cork. Including vacuum attachment for the connection of an external industrial vacuum cleaner.

### Technical specifications:

Working power: 2200 W  
Rotation: 1900-7500 rpm stepless  
Weight: 6,5 kg  
Working width: 180 mm

Delivery with velcro sanding disc Ø 180mm with soft underlay. Delivery in metal carrying case.



## VELCRO SANDING DISC Ø 180mm for ROMO-180 junior

27.00944

With soft underlay. For edge sander ROMO-180 junior (24.70201) and angle grinder. For use with 180 mm Velcro sanding discs.



## SANDING FRAME FOR ROMO-180 junior

24.70260

For better handling and long-term relaxed work. The correct working angle is set with 2 height-adjustable castors.



# HANDHELD GRINDING MACHINES



## MINI SANDER

19.14970

Handy mini sander for sanding work on wooden and parquet floors in the edge area and corners, hard-to-reach places and on stairs.

Use as a tile cutter with the diamond cutting disc.

In the set incl. sanding pad 50mm and abrasives.

- 1000 watts of power
- variable speed up to 18000 rpm via belt drive guarantees high performance
- rubber pad 50mm
- dust extraction adapter
- transport bag



## FLEXIBLE RUBBER PAD 50mm

19.14972

with fastening screw



## ABRASIVE DISC Ø 50mm WITH 8mm CENTER HOLE

High quality for the professionals.  
Pack of 25 pieces.

Grit 40  
Grit 60  
Grit 80

19.14990  
19.14992  
19.14994



## CARBIDE CUTTER DISC 50mm

19.14974

For parquet repairs.

- Professional disc with 2 carbide teeth
- 10 mm cutting depth
- 4 mm cutting width



## DIAMOND DISC 50mm

19.14975

For cutting tiles and screed.



## GRINDING DISC FOR MINI SANDER

19.14976

Made of silicon carbide.  
Pack of 3 pieces.

# SINGLE DISC MACHINES



## SINGLE DISC MACHINE RO-2200 2.0

19.16205

Robust and powerful single disc sanding machine for all subfloor preparation works from sanding to the effective removal of adhesive and floor covering remainders, filler, leveling unevennesses in the subfloor as well as for cleaning and maintaining floors.

### Technical specifications:

Working power: 2200 W

Rotation: 150 rpm

Weight: 41,0 kg

Working width: 400 mm

Pre-installed for ROLL vacuum system



## SINGLE DISC MACHINE RO-1800 2.0

19.16200

Universal single disc machine for all subfloor works, as well as for cleaning and maintenance.

### Technical specifications:

Working power: 1800 W

Rotation: 150 rpm

Weight: 37,0 kg

Working width: 400 mm

Pre-installed for ROLL vacuum system



## ROLL DUST VACUUM SYSTEM

19.14210

Universal vacuum system, suitable for all Roll machines for absolutely dust-free work! Keeps the air 100% dust free.

The vacuum system is mounted to the preinstalled machine; the suction hose with adapter is connected to the industrial vacuum cleaner e.g. 19.15131.

All machines (RO-2200 2.0, RO-1800 2.0) are already pre-installed to connect this system. Also suitable for previous models of single disc machines – upon request.

Recommendation! We recommend keeping the vacuum system always mounted!



## ROLL DUST VACUUM SYSTEM "VELCRO"

19.14206

Version with Velcro.

Universal vacuum system, suitable for all Roll machines.

The vacuum system is mounted on the already pre-equipped machine; The suction hose incl. adapter is connected to a vacuum cleaner.

Scope of delivery: loop tape, Velcro tape, 2 connecting pieces, suction hose.

# SINGLE DISC MACHINES



## SINGLE DISC MACHINE RO-2000

19.14180

The RO-2000 is a powerful single disc machine for all subfloor preparation work and for cleaning and maintaining floor coverings.

### Technical specifications:

Working power: 2000 W

Rotation: 190 rpm

Weight: 40,0 kg

Working width: 400 mm

Delivery includes dust vacuum system

## LIQUID TANK

54.00541

For single disc machine RO-2000.

To be installed on the pole of the machine.  
For applying detergent etc. during work.

Till 13l capacity.



## SINGLE DISC MACHINE CLEANER II

19.14192

Particularly handy and easy-to-use single-disc machine.

Areas of application: for cleaning and maintaining floors.  
Also recommended for the end user!

### Technical specifications:

Working power: 750 watts, 230 volts

Rotation: 190 rpm

Weight: 25,0 kg

Working width: 330 mm

Delivery includes pad pad, brushes and liquid tank



## HOLDER "SMART"

54.00155

For single disc machines RO-1800 2.0 / RO-2200 2.0 (page 20)

For attaching the suction hose and the allen key to the handle of the machine.



## ADDITIONAL WEIGHT

53.40110

For single disc machines RO-1800 / RO-2200

Weight 5,5 kg



# DISCS FOR SINGLE DISC MACHINES



## ROLL DIAMOND DISC "FORGED"

19.14330

Grinding disc for single disc machine with 5 freely rotating diamond discs 125mm with forged segments. For sanding cement-based substrates, filler, anhydrite, coatings and leveling out small unevenness, e.g. trowel marks.

Very aggressive grinding effect with a very long service life thanks to forged and precision-welded diamond segments.



## DIAMOND DISC Ø 125mm "FORGED"

19.14333

With 6 special forged segments inductively welded.



## ROLL DIAMOND DISC "Z-SEGMENT FORGED"

19.14338

Grinding disc for single disc machine with 5 freely rotating diamond discs 125mm with forged Z-segments. For sanding cement-based substrates, leveling compound, anhydrite, coatings and leveling small unevenness, e.g. trowel marks.

Very aggressive grinding effect with a very long service life thanks to forged and precision-welded Z-diamond segments.



## DIAMOND DISC Ø 125mm "Z-SEGMENT FORGED"

19.14336

With 8 special forged Z-segments inductively welded.



## ROLL DIAMOND DISC

19.14320

Grinding disc for single disc machine with 5 freely rotating diamond discs 125mm with double row diamond segments. For sanding cementary surfaces, leveling compound, anhydrite, coatings and smaller bumps, e.g. trowel marks.

Very aggressive grinding effect with a long service life.



## DIAMOND DISC Ø 125mm "TWO-ROWED"

19.14321

Two-rowed, with high diamond content.

# DISCS FOR SINGLE DISC MACHINES



## TUNGSTEN CARBIDE RING DISC GRIT 14

19.17180

For universal use! For rough grinding of cement bonded surfaces, sintered surfaces.  
For grinding of paint and coatings.  
For grinding slightly uneven surfaces.  
For removing adhesive films.

Steel disc Ø 400mm, 14kg.



## TUNGSTEN CARBIDE RING DISC GRIT 10

19.17182

For rough grinding of cement bonded surfaces, sintered surfaces.  
For removing remainders of adhesive and coatings.  
For grinding slightly uneven surfaces.  
For roughening concrete surfaces.  
For removing adhesive films.

Steel disc Ø 400mm, 14kg.

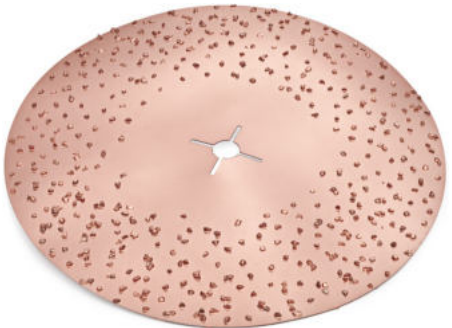


## TUNGSTEN CARBIDE RING Ø 400mm

Screws and nuts included.

Grit 14  
Grit 10

19.17185  
19.17188



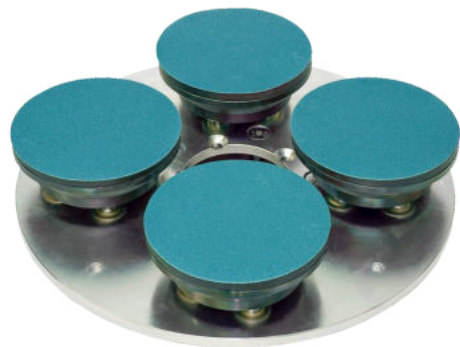
## TUNGSTEN CARBIDE DISC

For grinding spackle, screed and adhesive films. More efficient than abrasives.  
Double sided metal disc Ø 400mm.  
Used with drive disc 19.14211/12.

KG 10  
KG 14  
KG 24  
KG 36

19.17125  
19.17130  
19.17135  
19.17140

# DISCS FOR SINGLE DISC MACHINES



## 4-HEADED WOOD SANDING DISC

19.14500

For sanding wooden floors, parquet and cork, for finish sanding and for renovating.  
For sanding before varnishing and sealing. 4 discs Ø 150mm run on high quality bearings, screwed on a steel disc, discs are with soft underlay for Velcro sanding paper, they turn due to rotation of the machine.

Efficient disc with high sanding removal.

Steel disc Ø 400mm, 21kg.

We recommend working with ROLL vacuum attachment for dust-free working area!



## STONE GRINDING WHEEL DISC

19.14308

For grinding concrete, screed and spackle.  
Aggressive grinding with very smooth grinding results.

Ø 400mm, 8,5kg.

## STONE GRINDING WHEEL Ø 400mm

19.14309



## SMOOTHING DISC 600mm

19.14183

For smoothing wet concrete.  
Steel disc Ø 600mm with edges bent up slightly, 10kg.



# DISCS FOR SINGLE DISC MACHINES



## ROLL DRIVE DISC OF ALUMINUM

For abrasive discs. With exchangeable rubber covering.  
Wrench and fixation screw included.

Ø 380 mm  
Ø 400 mm

19.14211  
19.14212

## RUBBER COVERING

52.00391

## WRENCH 12mm

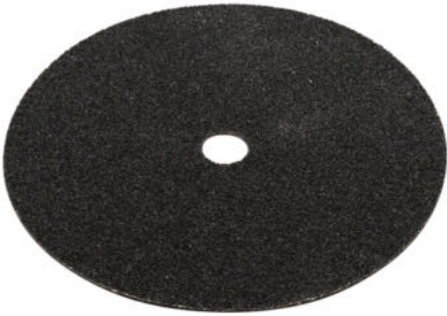
52.00394

## FIXATION SCREW M 25

52.00393

## HOLDER "SMART"

54.00155



## ABRASIVES Ø 380mm

For single disc machines, double sided, used with drive disc 19.14211.  
Premium quality for professionals. Silicium carbide on cloth/paper.  
Pack of 10 units.

Grit 16  
Grit 24  
Grit 36  
Grit 40  
Grit 60  
Grit 80  
Grit 100  
Grit 120

19.14220  
19.14230  
19.14235  
19.14240  
19.14250  
19.14260  
19.14270  
19.14267



## ABRASIVES Ø 400mm

For single disc machines, double sided, used with drive disc 19.14211/12.  
Premium quality for professionals. Silicium carbide on cloth/paper.  
Pack of 10 units.

Grit 16  
Grit 24  
Grit 36  
Grit 40  
Grit 60  
Grit 80

19.14271  
19.14272  
19.14263  
19.14273  
19.14274  
19.14275



## PAD HOLDER Ø 380mm

For Superpads and Normalpads, with exchangeable spiked plate.

19.15340

## SPIKED PLATE

400mm for pad holder 19.15340

52.00389



## SUPERPADS 20mm Ø 406mm

Used with pad holder 19.15340. From black to white decreasing hardness density.  
Pack of 5 units.

Black for rough cleaning  
Green for cleaning (thorough cleaning)  
Red for softer cleaning of sensitive floors  
Beige for waxing, polishing and sensitive cleaning  
White for polishing

19.15350  
19.15360  
19.15370  
19.15380  
19.15390

## NORMALPADS 8mm Ø 406mm

Used with pad holder 19.15340. From black to white decreasing hardness density.  
Pack of 10 units.

Black for rough cleaning  
Green for cleaning (thorough cleaning)  
Red for softer cleaning of sensitive floors  
Beige for waxing, polishing and sensitive cleaning  
White for polishing

19.15351  
19.15361  
19.15371  
19.15381  
19.15391

# ACCESSORIES FOR SINGLE DISC MACHINES



## CURRENT LIMITER WITH SOFT START

19.14925

Maintenance-free, with long lifetime.  
The tripping of the fuse and work interruption time involved is avoided!

Without jerking soft start more safety and protection of the machine is guaranteed.  
Up to 3500 W.



## INDUSTRIAL EXTENSION CABLE 10m

82.00112

3x2,5mm<sup>2</sup> incl. Schuko plug and coupling.

Features:

- VDE approved and approved
- for high mechanical loads
- with heavyduty supporting element
- VDE cable type H07RNF
- temperature range: 25 ° C to + 60 ° C
- striking color



## EXTENSION CABLE 10m

82.00118

3x2,5mm<sup>2</sup> incl. Schuko plug and coupling.



## CABLE DRUM 25m

82.00125

3x2,5mm<sup>2</sup>

Features:

- for use on construction sites according to BGI 608 and permanent outdoor use, IP 44
- extremely abrasionresistant, rollover resistant and has an extreme cut and tear resistance
- acid and oil resistant, weather and microbe resistant
- coldresistant up to 40 ° C
- 3 earthed sockets, splash-proof, with self-closing lids
- overheat protection, overheat and overload indicator
- extra sturdy tubular steel frame with exceptionally robust carrying handle with comfortable cable management
- drum body made of special plastic with reinforcing ribs



## PERSONAL PROTECTION SWITCH PRCD-S+

82.00200

Mobile protection against electrical accidents on the construction site.  
Every time it is switched on and during operation the correct connection conditions are checked fully automatically.

Including visual error message.

Safety cable IP44, 16A 250V ~ 30mA with mounted solid rubber plug + coupling



## THREE-PHASE TEST PLUG 400V / 16 A 5-PIN

82.00122

For testing and measuring the correct connection of sockets, extensions, power distributors, etc.

- connection and rotating field test device
- 16 amp / 400 V, 5pin, 6 H power
- indicator lights are very bright a
- protection class IP 44 suitable for construction site

# DISCS FOR SINGLE DISC MACHINES



## GRINDING BRUSH 400mm GREY

19.15305

For cleaning contaminated industrial floors.  
Nylon brush with abrasive grits.



## SCRUBBING BRUSH 400mm WHITE, ROUGH

19.15310

Universal cleaning brush for shops, entrances etc.  
For tiles and synthetic floor coverings.  
Polypropylene fibre 0,7mm.



## POLISHING BRUSH 400mm BROWN (UNION)

19.15330

For polishing wax, emulsions etc. to get a shiny surface.  
For cleaning synthetic floor coverings. Nature bristle.



## LIQUID TANK FOR SINGLE DISC MACHINES

53.80120

For single disc machine RO-1800 and RO-2200.

To be installed on the pole of the machine.  
For applying detergent etc. during work.

Till 12l capacity.







# PARQUET SANDING MACHINES



## PARQUET SANDING MACHINE WOODY "JUNIOR"

24.70101

Professional parquet sanding machine with vertical sanding – the original! High engine power and torque, necessary weight, close-to-the-edge grinding and dust-free work distinguish the parquet sanding machine WOODY.

These characteristics of the WOODY make it possible to sand or brush (structure) the plank or parquet floor from rough sanding to fine sanding with just one machine.

- for rough sanding to fine sanding with only one machine
- for multilayer- and solid parquet
- significant time savings due to less sanding in the edge area
- dust-free for your health and for the pleasure of your client
- replaces the belt sanding machine for rough sanding and a multidisc machine for fine sanding

### Technical specifications:

Working power: 2200 W, 230 V  
Disc Ø: 3 x 140mm  
Rotation: 680 rpm  
Working width: 450 mm  
Machine weight: 52 kg  
Working weight: 85 kg

### Included in delivery:

- 6 discs Ø 140mm for velcro sanding discs
- pad holder (use as single disc machine)
- vacuum system with suction hose and bushing
- transport wheels
- ball caster



## EDGE SANDER ROMO-180 junior

24.70201

For sanding wooden floors, parquet and cork. Including vacuum attachment for the connection of an external industrial vacuum cleaner.

### Technical specifications:

Working power: 2200 W  
Rotation: 1900-7500 rpm stepless  
Weight: 6,5 kg  
Working width: 180 mm

Delivery with velcro sanding disc Ø 180mm with soft underlay.  
Delivery in metal carrying case.

## EDGE SANDER "NOVA"

24.80000

Lightweight and powerful parquet edge sanding machine

- Lightweight and agile
- High grinding and working speed
- Efficient dust extraction
- Easily replaceable sanding arm

### Technical specifications:

Voltage: 230 V / 50 Hz  
Working power: 1150 W  
Working weight: 7,9 kg  
Rotation: 3.200 min<sup>-1</sup>  
Disc Ø: 150 mm  
Sanding arm: 130mm



## LONG SANDING ARM

24.80002

Easily replaceable sanding arm for use of the edge sanding machine Nova under radiators.

Length 330mm

# PARQUET SANDING MACHINES



## VELCRO SANDING DISCS CERAMIC Ø 140mm

Developped especially for the rough sanding with the parquet sanding machine WOODY. Pack of 30 units.

Grit 40  
Grit 50  
Grit 60

53.16040  
53.16050  
53.16060



## TUNGSTEN CARBIDE DISCS Ø 140mm

For the rough sanding with the parquet sanding machine WOODY for very hard or lubricious surfaces and greatly toothed parquet floors. Pack of 3 units.

Grit 36  
Grit 60

53.16100  
53.16110



## VELCRO SANDING DISCS ZIRCON Ø 140mm

For Parquet sanding machine Woody. Premium quality for professionals. Grain: Zirconia fully resin bonded. Pack of 30 units.

Grit 24  
Grit 36  
Grit 40  
Grit 60  
Grit 80  
Grit 100

53.14024  
53.14036  
53.14040  
53.14060  
53.14080  
53.14100



## VELCRO SANDING DISCS ALUMINUM OXID Ø 140mm

For fine grinding with the parquet sanding machine Woody. Premium quality for professionals. Pack of 30 units.

Grit 60  
Grit 80  
Grit 100

53.13060  
53.13080  
53.13100



## CERAMIC VELCRO SANDING DISCS Ø 140mm

Precision-molded ceramic abrasive grain for higher sanding performance and long service life with the parquet sanding machine WOODY/RO-800. Pack of 25 units.

KG 60  
KG 80  
KG 120

53.17060  
53.17080  
53.17120



## DIAMOND DISC Ø 140mm

For rough sanding with the parquet sanding machine Woody. Designed to remove all types of paints and oils, also with lubricating surfaces.

Grit 18  
Grit 40  
Grit 60  
Grit 100

53.16142  
53.16146  
53.16156  
53.16166



## PCD-DISC Ø 140mm PCD-TRAPECIUM

For parquet sanding machine Woody/RO-800. PCD milling disc with trapezoidal PCD segments and support segments for removing floor coatings, paints, all types of adhesives and sealants (such as epoxy resin, polyurethane and acrylic), as well as for milling off levelling compound.

53.16174



## PCD-DISC Ø 140mm R6

For parquet sanding machine Woody/RO-800. Diamond disc for grinding work on mineral surfaces. For sanding screeds and fillers, sanding loose fillers and thin, non-smearing adhesive layers.

53.16172

# PARQUET SANDING MACHINES



## VACUUM HOOD 115mm FOR WOODY

53.10605

For use with the planetary head.

## VACUUM HOOD 90mm FOR WOODY

53.10610

For use with the pad holder.

## VACUUM HOOD WITH SUPPORTING RING FOR WOODY

53.10621

For use with wood structuring brushes.

## PAD HOLDER Ø 430mm FOR WOODY

24.70120



## SANDING DISC Ø 140mm FOR WOODY

53.00300

With velcro

## INTERMEDIATE DISCS FOR SANDING DISC Ø 140mm

53.00315

Flexible pad to protect the sanding discs.  
Pack of 15 units.

## SOFTPAD Ø 140mm FOR RO-800SA AND WOODY

53.00320

Flexible and soft intermediate disc for the parquet sander RO-800SA.  
Thickness 6mm

## TURBO FIBERPAD

Ø 406mm for single disc machines  
Ø 150mm with Velcro for edge sander

19.15560  
19.15570

The unique Fiberpad was developed for the final sanding of parquet floors and the deep cleaning of various surfaces such as wood and stone.

For the fine sanding of parquet floors, the Fiberpad replaces the classic sanding discs with 80 and 100 grit.

## SUPERFINISHING PAD Ø 140mm

For the final sanding and finish sanding with perfect result on all wooden and parquet floors with the parquet sanding machine WOODY. Pack of 30 units.

Grit 60  
Grit 80  
Grit 100  
Grit 120

53.15060  
53.15080  
53.15100  
53.15120

## SUPERFINISHING PAD Ø 140mm

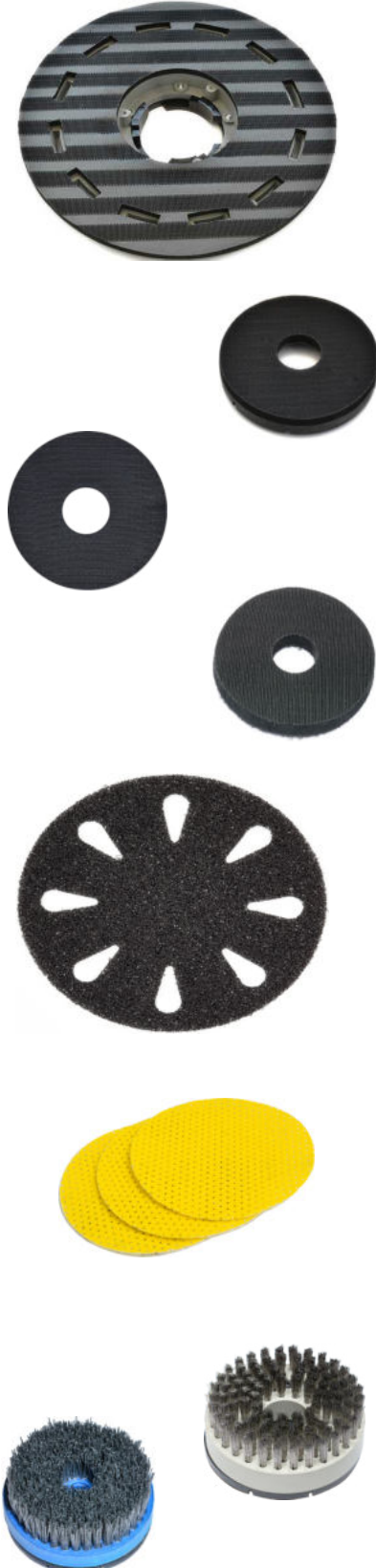
For structuring the surface.

Steel brush

24.70205

Nylon brush Grit 36  
Nylon brush Grit 46  
Nylon brush Grit 70  
Nylon brush Grit 120

24.70210  
24.70220  
24.70230  
24.70240



# PARQUET SANDING MACHINES



## PARQUET SANDING MACHINE RO-800SA

19.16550

The parquet sanding machine RO-800SA is a universal floor sanding machine for all sanding work from the subsurface to the parquet.

Delivery includes 4-headed sanding disc unit for direction-free sanding of wooden and parquet floors from coarse sanding to fine sanding.

Thanks to the standard mounting flange and the flexible dust extraction, all ROLL discs such as sanding discs or diamond discs can be used for surface preparation, as well as pad holders for cleaning, oiling or polishing.

If necessary, several additional weights can be mounted for more pressure.

Easy transport with the height-adjustable transport frame with large wheels and the front carrying handle.

This makes the RO-800SA parquet sanding machine a universal floor grinding machine for all surfaces.

- Coarse sanding to fine sanding on wooden and parquet floors with just one machine
- Surface preparation with ROLL sanding discs
- Dust-free with the dust extraction system when connected to a vacuum cleaner
- Easy transport with large transport wheels
- Additional weights for more pressure (option)

### Technical specifications:

Working power: 2100 watts, 230 volts, 50Hz

Output speed: 140 rpm

Working width: 400 mm

Machine weight: 50 kg

Speed of the sanding unit: 800 rpm

Sanding discs Ø: 4 x 140 mm

Weight of the sanding unit: 7 kg

Working weight: 57 kg

Included in delivery:

- 4 discs Ø 140mm for velcro sanding discs
- 4 soft pads Ø 140mm
- dust vacuum system
- transport wheels



## ADDITIONAL WEIGHT FOR RO-800SA

53.50010

Weight: 7kg

Includes mounting screws.

## ADDITIONAL WEIGHT FOR RO-800SA

53.50015

Weight: 7kg

Without mounting screws.



## VACUUM HOOD FOR RO-800SA

53.50020

Textile sleeve with brush strip for low-dust sanding of floors.



## SANDING DISC SET Ø 140mm FOR RO-800SA

53.50031

With Velcro

Set of 4 pieces



## SOFTPAD Ø 140mm FOR RO-800SA AND WOODY

53.00320

Flexible and soft intermediate disc for the parquet sander RO-800SA.

Thickness 6mm



# DUST EXTRACTION TECHNOLOGY

CONSTRUCTION VACUUM CLEANER AND DUST PRE-SEPARATOR



# CONSTRUCTION VACUUM CLEANER



## VACUUM CLEANER 2400, LONGOPAC, FILTER CLASS H

19.16950

Powerful industrial vacuum cleaner, 2-engined, with filter class H, incl. filter cleaning system, incl. accessories.

Longopac version: Dust removal via the Longopac system in the 20meter long endless hose offers many advantages over conventional disposal in the container:

- dust-free because the dust is sealed directly in the hose
- fast change reduces machine downtime
- higher capacity of the cleaner

The industrial vacuum cleaner 2400 has 2 individually switchable 1200 watt suction motors in a robust metal housing.

A vacuum indicator allows the continuous monitoring of the proper operation and possible filter clogging.

This industrial vacuum cleaner has a primary PTFE filter with 3,2m<sup>2</sup> filter surface and two HEPA filters with filter class H. With an effective filter cleaning system using the "Jet Pulse System", i.e. using negative pressure and compressed air pulses, the filter is cleaned effectively and thus guarantees a long service life of the filter and consistent suction performance.

### Technical specifications:

Power: 2400 Watts (2 x 1200 Watt)  
Voltage: 220-240 V / 50/60 Hz  
Filter class: hepa filter H13  
Air output: 528 m<sup>3</sup> / h  
Weight: 50kg  
Dimensions: 66x57,5x126cm

### Accessories (incl.):

Hose 50mm nominal diameter, length: 7,5m, suction tubes, floor nozzle.



## PRE-FILTER FOR VACUUM CLEANER 2400

19.16955

## H-FILTER FOR VACUUM CLEANER 2400

19.16956

Filter class H, 2 filters in the vacuum cleaner (1 per motor)



## VACUUM CLEANER 1700, LONGOPAC, FILTER CLASS H

19.16940

Powerful industrial vacuum cleaner, 1-engined, with filter class H, incl. filter cleaning system, incl. accessories.

Longopac version: Dust removal via the Longopac system in the 20meter long endless hose offers many advantages over conventional disposal in the container:

- dust-free because the dust is sealed directly in the hose
- fast change reduces machine downtime
- higher capacity of the cleaner

The industrial vacuum cleaner 1700 has 1 1700 watt suction motor in a robust metal housing.

A vacuum indicator allows the continuous monitoring of the proper operation and possible filter clogging.

This industrial vacuum cleaner has a primary PTFE filter with 1,5m<sup>2</sup> filter surface and two HEPA filters with filter class H. With an effective filter cleaning system using the "Jet Pulse System", i.e. using negative pressure and compressed air pulses, the filter is cleaned effectively and thus guarantees a long service life of the filter and consistent suction performance.

### Technical specifications:

Power: 1700 Watts  
Voltage: 220-240 V / 50/60 Hz  
Filter class: hepa filter H13  
Air output: 300 m<sup>3</sup> / h  
Weight: 40kg  
Dimensions: 65x42x107 cm

### Accessories (incl.):

Hose 38mm nominal diameter, length: 5m, suction tubes, floor nozzle.



## PRE-FILTER FOR VACUUM CLEANER 1700

19.16945

## H-FILTER FOR VACUUM CLEANER 2400 / 1700

19.16956

Filter class H



# CONSTRUCTION VACUUM CLEANER

## INDUSTRIAL VACUUM CLEANER 1450MF

19.15131

Professional device for industrial use. The multifilter improves the air filtration and also withstands difficult dusts (cement, gypsum, soot particles etc.). With stainless steel container and rubberized rollers.

NEW: With additional motor protection filter

- very compact
- extremely powerful
- with additional socket with automatic switch-on

### Technical specifications:

Power: 1450 W  
Airflow: 245 m³/h  
Negative pressure: 40 kPa  
Capacity: 30 l  
Weight: 13,3 kg  
Size: 45 x 45 x 76 cm  
Filter class: M

Accessories (incl.):  
Hose 38mm nominal diameter, length: 5m, suction tubes, floor nozzle.



## MULTIFILTER FOR VACUUM CLEANER 1450MF

79.40000

Filter class M

## CARTRIDGE FILTER FOR VACUUM CLEANER 1450MF

79.40005

Motor protection filter in the suction head

## FLEECE BAGS FOR VACUUM CLEANER 1450MF

19.15134

Pack of 10 units

## ADAPTER FOR FLEECE BAGS FOR 1450MF

79.40027

## INDUSTRIAL VACUUM CLEANER 2300

19.15206

Powerful yet quiet industrial vacuum cleaner, 2-engined, with filter class M, incl. filter cleaning system, incl. accessories.

The industrial vacuum cleaner 2300 has 2 individually switchable by-pass suction motors in a robust metal housing, isolated to reduce the loudness. Two placed at the sides handles allow easy lifting the motor head.

This industrial vacuum cleaner has a star filter with 2m² filter surface. By external filter cleaning device the filter is moved vertically is cleaned in order to guarantee a long service life of the filter and a constant suction output.

The mobile storage container can be lowered and be emptied quickly and safely. The vacuum cleaner is mounted on a robust steel frame with non-marking castor wheels and brake.

### Technical specifications:

Power: 2300 W (2 engines 230 V / 50 Hz)  
Airflow: 360 m³/h  
Negative pressure: 25 kPa  
Capacity: 45 l  
Filter surface: 20.000 cm²  
Weight: 48 kg  
Size: 53 x 60 x 120cm  
Filter class: M

Accessories (incl.):  
Hose 50mm nominal diameter, length: 5m, suction tubes, floor nozzle.



## STAR FILTER FOR INDUSTRIAL VACUUM CLEANER 2300

19.15207

Filter class M with Teflon coating

# CONSTRUCTION VACUUM CLEANER



## H-FILTER SET FOR INDUSTRIAL VACUUM CLEANER 2300

19.15217

Consisting of an intermediate boiler piece and a class H cartridge filter.



## H-FILTER FOR INDUSTRIAL VACUUM CLEANER 2300

19.15218

Class H replacement cartridge filter for H filter set for industrial vacuum cleaner 2300



## DUST BAG LONGOPAC

20 meters of endless hose, 1 piece  
20 meters of endless hose, pack of 4 pieces

19.15123  
19.15123/1



## OBJECT NOZZLE WITH WHEELS 37cm

19.15057

Including brush and rubber strip  
38mm connection

## OBJECT NOZZLE WITH WHEELS 45cm

19.15044/1

Including brush and rubber strip  
38mm connection

## OBJECT NOZZLE WITH WHEELS 50cm

19.15082

Including brush and rubber strip  
50mm connection

## SET OF BRUSHES 45cm FOR OBJECT NOZZLE

83.00900

## SET OF RUBBER STRIPS 45cm FOR OBJECT NOZZLE

83.00950



## SUCTION HOSE KIT Ø 50mm, LENGTH 5m

19.15036

To optimize the suction power on the grinding machine RO-250 / RO-300 / RO-400 in connection with 2-motor vacuum cleaner.



## CONE ADAPTER

86.00059

For connecting different suction sleeves  
Connection with 4 conical steps: 27mm, 32mm, 35mm, 37mm



## REDUCING CONNECTOR 52,2mm - 38,2mm

83.02023

For connecting the standard 38mm suction pipe to the 50mm hose.



## Y-CONNECTION FOR 38mm HOSE

19.15039

Including connector and hose.  
To connect two industrial vacuum cleaners to the machine or dust separator.



# CONSTRUCTION VACUUM CLEANER



## ROLL DUST SEPARATOR

19.15032

Maximize the efficiency of your industrial vacuum cleaner!

The ROLL dust separator captures up to 99% of the dust before it reaches your vacuum cleaner, no filter clogging and no loss of suction. Thus, the durability of the filter and the vacuum cleaner is substantially increased. Easy to use, effective in the result.

- protects the vacuum cleaner filter
- no loss of suction
- no clogging of the filter
- easy to empty
- 5 castor wheels design prevents tilting of the dust separator
- steel tank with inner coating

Delivered with cyclone, 45l steel tank, wheeled base, connectors and hose, dust bag.

## DUST BAGS FOR DUST SEPARATOR

80.10055

Pack of 10 pieces.  
Made of LDPE, real 140my. 610x800mm.

## STEEL TANK 45L

80.10040

For replacement with a larger volume of dust.



## ROLL DUST SEPARATOR - ANTISTATIC

19.15034

Antistatic version. Delivered with antistatic cyclone, 45l steel tank, wheeled base with antistatic tape, antistatic suction hoses 2x5m and connectors.

The ROLL dust separator captures up to 99% of the dust before it reaches your vacuum cleaner, no filter clogging and no loss of suction. Thus, the durability of the filter and the vacuum cleaner is substantially increased. Easy to use, effective in the result.

- protects the vacuum cleaner filter
- no loss of suction
- no clogging of the filter
- easy to empty
- 5 castor wheels design prevents tilting of the dust separator
- steel tank with inner coating



## ROLL DUST SEPARATOR - LONGOPAC

19.15033

Longopac version of the popular ROLL dust separator.  
Designed to absorb large quantities of grinding and milling material.

Dust removal via the Longopac system in the 20 meter long endless hose offers many advantages over conventional disposal in the container:

- dust-free because the dust is sealed directly in the hose
- fast change reduces machine down-time
- higher capacity of the cleaner

Delivered with cyclone, wheeled base, connectors, hose and 20m dust bag.

## DUST BAG LONGOPAC

20 meters of endless hose, 1 piece  
20 meters of endless hose, pack of 4 pieces

19.15123  
19.15123/1

# CONSTRUCTION VACUUM CLEANER



## AIR CLEANER 1800

19.15235

The air cleaner 1800 generates negative pressure in the room and absorbs the dust particles in the air, thus a lowdust renovation is guaranteed. Dust can no longer spread into the adjoining rooms and thus reduces cleaning work after the renovation.

The use of the air cleaner 1800 stands for professional appearance and adds value for your customer. The air cleaner 1800 can be set up quickly and easily. The air cleaner 1800 has two filter technology with a prefilter G4 and a HEPA filter.

Special features:

- compact and powerful
- filters up to 99.995% from the room air
- maximum air output 1800 m<sup>3</sup> / h
- adjustable fan motor
- quiet operation
- ergonomic handle

### Technical specifications:

Power: 420 watts, 230 volts

Air volume: 1800 m<sup>3</sup> / h

Prefilter area: 0.5 m<sup>2</sup>

Microfilter area: 5.0 m<sup>2</sup>

Filter class: M (H optionally available)

Outlet Ø: 300 mm

Inlet Ø: 165 mm

Dimensions: 40 x 40 x 40 cm

Weight: 20.0 kg



## MICROFILTER "H" FOR AIR CLEANER 1800

79.00200

5,0 m<sup>2</sup> filter surface

## PRE-FILTER "G4" FOR AIR CLEANER 1800

79.00201

0,5 m<sup>2</sup> filter surface



## FLEXIBLE PVC SPIRAL HOSE Ø 254mm, 5m

79.00210

for air cleaner

## EXHAUST HOSE Ø 175mm, 3m

79.00215

for air cleaner

# SCRAPERS AND GRINDING STONES



## FLOORING SCRAPER WITH TELESCOPIC HANDLE

15.12655

Robust model. Telescopic handle included.  
Length from 97 to 175cm. Blade width 210mm.  
Slightly inclined scraper head for more aggressive work.

## SPARE BLADES FOR FLOORING SCRAPER

15.12657

210mm, Pack of 10 units



## SCRAPER ALLWAY LONG 500mm

15.12645

Blade width 100mm.  
With one single turn the blade can be fixed or loosen.



## SCRAPER 250mm

15.12641

Blade width 100mm.  
Scraper for universal use.  
With hammer end.



## JERKING SCRAPER 80mm

15.13328

With thick blade, beveled. With hammer end.

## JERKING SCRAPER 70mm

15.13330

Sharpened blade.



## TUGNSTEN CARBIDE GRINDING BLOCK 200mm

Due to side edge very effective alongside walls.  
Size: 195x125x25mm.

Grit 24  
Grit 36

19.13485  
19.13486



## HAND GRINDING STONE "FLASH" 200mm

Made of silicium carbide, due to holes very aggressive.  
Size: 200x100x35mm

Grit 36

19.13481

# LINOLEUM AND PVC INSTALLATION TOOLS



## LINO STRIP CUTTER VARIO 110

15.12421

Professional tool for cutting stripes of lino, PVC, CV and rubber floors, from 0 till 110mm. Can also be used as an edge trimmer. Stepless adjustment of the cutting width. Ergonomic design.

With the unique ROLL-3-blades-system – due to the slightly inclined blades floors can be cut very easily.

Convertible to cutting bar till 355mm!

## LINO STRIP CUTTER VARIO 355

15.12425

Compare Vario 110. For cutting stripes from 0 till 355mm.

## CUTTING BAR 110MM

15.12428

For lino strip cutter Vario 355, for stripes till 110mm.  
Works with ROLL-3-blades-system.

## CUTTING BAR 355MM

15.12424

For lino strip cutter Vario 110, for stripes till 355mm.  
Works with ROLL-3-blades-system.

## BLADES FOR STRIP CUTTER VARIO

15.12423

for lino strip cutter Vario 110 and 355.  
Pack of 20 blades

## EDGE TRIMMER ROLLINO 12mm

15.12434

For cutting production edges. Easy cutting due to the special position of the blades. Ergonomic design.  
Blade changing and blade adjustment easy and fast.

## EDGE TRIMMER ROLLINO 22mm

15.12436

For cutting production edges with a wider cut of 22mm.  
Easy cutting due to the special position of the blades. Ergonomic design.

## BLADES FOR EDGE TRIMMER ROLLINO

15.12435

For Edge Trimmer 15.12434 und 15.12436.  
Pack of 10 units.

## EDGE-BEVEL CUTTER

15.12448

To clean and bevel the cut edge when laying LVT Design Flooring planks or tiles.  
This ensures that the planks are assembled precisely.

With ergonomic handle design and rotating blade.  
Blade change without tools.

## LEISTER HAND GROOVER GROOVY

16.13940

To prepare grooves without grooving machine.  
Including grooving blade 3,5mm.  
With guide rollers and adjustable groove depth.

## GROOVING BLADE FOR HAND GROOVER GROOVY

3,5 mm  
2,5 mm

16.13941  
16.13942

## HAND GROOVER EASY

16.13946

Hand groover Easy for grooving the welding groove before welding elastic floor coverings. Ergonomic, quick and precise with side support rollers, front guide nose and rear guide roller. Depth-adjustable blade 3,5 mm at the front and back for the perfect cut right up to the wall.

## BLADE FOR HAND GROOVER EASY

3,5 mm front  
2,5 mm rear

16.13947  
16.13948





# LINOLEUM AND PVC INSTALLATION TOOLS



## FLOOR SCRIBER

16.14060

Combined tool, can also be used as a short scriber for base boards.  
Pointed blade and needle included.

## POINTED BLADE FOR FLOOR SCRIBER

16.14061

Pack of 5 units

## NEEDLE FOR FLOOR SCRIBER

16.14062

Pack of 10 units



## HEIGHT SCRIBER

16.14051

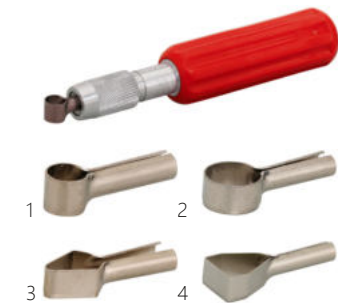
To mark a fix height e.g. for base boards, from 10 to 150mm.  
Robust model. Pencil included.  
Delivery in a convenient box.



## SCRIBER 385mm

16.14067

With needle (for walls)



## CORNER KNIFE

16.13984

Exchangeable special blade for individual applications.  
(comes without blade)

Blade No. 1, Pack of 2 units  
Blade No. 2, Pack of 2 units  
Blade No. 3, Pack of 2 units  
Blade No. 4, Pack of 2 units

16.13988  
16.13986  
16.13987  
16.13985



## HAND GROOVER

16.13950

With 5 blades

## BLADES FOR HAND GROOVER

16.13960

Pack of 10 units



## HAND GROOVER FOR SAFETY FLOORS

16.13981

## BLADES FOR HAND GROOVER FOR SAFETY FLOORS

16.13982



## HAND GROOVER FOR RUBBER AND PVC

16.13970

With U-blade

## BLADES FOR HAND GROOVER FOR RUBBER AND PVC

16.13980

Pack of 10 units



## TRIANGLE CARBIDE SCRAPER

16.13968

Hand groover for safety floors. Carbide blade included.

## BLADE FOR TRIANGLE CARBIDE SCRAPER

16.13969

# LINOLEUM AND PVC INSTALLATION TOOLS



## LINOCUTTER ROLLlINO

15.12639

Professional seam cutter for lino, PVC and vinyl (LVT).

Overlying lines of lino can be slit and cut exactly in the right position of the underlaying material.

Advantages:

- robust baseplate runs on bearings and thus the Linocutter ROLLlino slides easily on top of the floor – important for sensitive design floor coverings and PU-coated floor coverings
- blades are slightly bent which ensures effortless scribing/cutting
- stepless adjustment of cutting width and cutting depth
- due to the cut-out in the baseplate the Linocutter ROLLlino can be lead easy at the edge of the floor
- Linocutter ROLLlino works with customary trapezium or hook blades
- besides trapezium blades also hooked blades can be added:  
special advantage: thin floor coverings can be cut in one step
- blade changing without extra tools



## GROOVING MACHINE EASY 5000

16.13670

For grooving all kinds of synthetic floors, lino and rubber.  
Very handy machine which follows uneven floors easily and guarantees professional grooving results.

With stepless adjustment of grooving depth. Side wheel adjustable for coverings with nubs. With vacuum system to connect vacuum cleaners for chip free work.

Delivery in metal carrying case including carbide blade, chip bag and holding bar.

### Technical specification:

Power: 830 W, 230 V  
Rotation: 5000 rpm  
Weight: 4,5 kg  
Carbide blade: 130mm, 12 teeth  
Cutting depth: 0-5,0 mm stepless



## CARBIDE BLADE FOR GROOVING MACHINE EASY 5000

16.13680

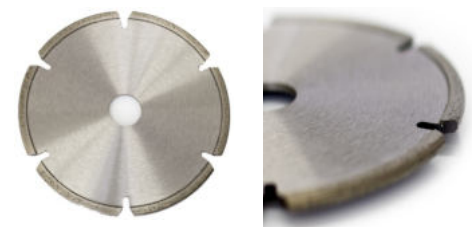
130 x 3,2 mm, 12 teeth trapezium



## DIAMOND BLADE FOR GROOVING MACHINE EASY 5000

16.13690

130 x 3,3 mm, for safety floors



# LINOLEUM AND PVC INSTALLATION TOOLS



## LEISTER WELDING MACHINE UNIFLOOR 500

16.13891

Leister's reliable automatic floor welder, UNIFLOOR 500, is a fresh and reimagined version of the proven UNIFLOOR E/S models. It is suitable for welding the joints in resilient floor coverings made of plastic such as PVC, CV, PUR, antistatic ESD floors, as well as for sealing the joints in natural coverings made of linoleum and rubber.

- automatic nozzle rotation device
- welding rod pressure roller can be raised and locked
- integrated side cutter

### Technical specifications:

Power: 2300 W, 230 V , 50/60Hz  
 Temperature: 100-560° C stepless  
 Air flow range: 45-100%  
 Speed: 0,7-7,5 m/min  
 Nozzle air slide [mm]: small, 1,6  
 Size (LxBxH): 562 x 289 x 440mm  
 Weight: approx. 15,5kg



## WELDING MOBILE

16.13795

Professional tool to make an easier job with hand hot air tools i.e. set of welding mobile and hot air tool works similar to a welding machine.

For welding PVC, rubber, lino and polyolefins. For short lanes as well as large areas. Due to the rubber clip (quick-fastener) all customary hot air tools (Leister Triac, Forsthoof, Steinel) can be fixed fast and easily.

Due to front and back rollers the system can lead stabilised in the grooved seam. Working angle adjustable.

For cooling the hot air tool, just tilt system backwards.  
 (Delivery without hot air tool)



## LEISTER HOT AIR TOOL TRIAC ST

16.13796

The successor to the legendary Leister Triac S is characterized as its predecessor through handling, reliability and versatility.

For welding PVC, rubber, polyolefins and lino floors.  
 Ideal to use with Welding car 16.13795.  
 Incl. Round nozzle 16.13830. Delivery in carrying case.

### Technical specifications:

Power: 1600 W, 220 V  
 Temperature: 40-700 °C, stepless



## LEISTER HOT AIR TOOL TRIAC AT

16.13794

The TRIAC AT is an intelligent hot-air hand tool for welding and shrinking plastics that is suitable for on-site use. With large digital display and intelligent «eDrive» operating unit.

Special features:

- the set temperature levels off automatically, voltage fluctuations are compensated
- the thermowell in front of the heating element guarantees precise temperature
- the air volume can be adjusted independently of the temperature

Incl. Round nozzle 16.13830. Delivery in carrying case.

### Technical specifications:

Power: 1600 W, 220 V  
 Temperature: 40-700 °C, stepless  
 Air flow: 120-240 l/min



## LEISTER MINIFLOOR - DRIVE UNIT

16.13885

The MINIFLOOR is the only automatic welder in the world that offers the possibility to connect a hot-air hand tool e.g. Triac ST or Triac AT in the simplest manner.

The sophisticated technology of the drive unit and the drive-sensors enable welding directly from the wall. The 51mm minimum distance from the wall, ensures trouble-free welding around construction pipes and L-skirts. Weighing in at 6,6 kg including a TRIAC AT and nozzle the MINIFLOOR is a lightweight solution among comparable welders and is easily transportable. Perfect directional stability thanks to double-axis drive.

### Technical specifications:

Power drive unit: 15 W  
 Voltage / Frequency: 230 V , 50/60Hz  
 Speed: 0,5-5,0 m/min  
 Dimensions drive unit (LxWxH): 310 x 225 x 245mm  
 Weight drive unit: 5,3 kg

# LINOLEUM AND PVC INSTALLATION TOOLS



## HOT AIR WELDING CASE TRIAC ST 16.13797

- In delivery included:
- Leister hot air tool Triac ST (16.13796)
  - Hand groover (16.13950)
  - Speed welding nozzle (16.13860)
  - Quarter moon knife (16.14040)
  - Trim guide (16.14050)
  - Round nozzle (16.13830)
  - Diamond knife sharpener 150x60mm (16.13865)

## HOT AIR WELDING CASE TRIAC AT 16.13798

See 16.13797 but with Leister hot-air welding tool Triac AT with digital display



## ROUND NOZZLE (TIP) 16.13830

For welding with speed welding nozzles.



## ROUND NOZZLE (TIP) FOR RADIATORS 16.13785

For welding under radiators. In conjunction with speed welding nozzles.



## SPEED WELDIGN NOZZLE 16.13860

5mm: for 4mm welding wire.



## SPEED WELDIGN NOZZLE 5/2mm 16.13856

For welding sensitive PVC-floor coverings, thinner wall coverings. With narrowed slot (2mm) to concentrate the heat stream straight into the center of the seam.



## SPEED WELDIGN NOZZLE 5/1mm 16.13855

Polyurethan nozzle – For welding sensitive PVC-floor coverings, thinner wall coverings. With narrowed slot (1mm) to concentrate the heat stream straight into the center of the seam.



## SWAN NECK NOZZLE 16.13783

attachable to universal adapter for pressing the seam in curves and corners.



## BRUSH FOR NOZZLES 16.13872

Made of brass to clean welding nozzles.  
Size: 300x100x5mm



# LINOLEUM AND PVC INSTALLATION TOOLS



## MOZART TRIMMING KNIFE

16.14025

Safe and fast tool for trimming the welding wire.  
With integrated pre-cut slide, exchangeable blade. 1 blade included.

## BLADES FOR MOZART TRIMMING KNIFE

16.14026

Pack of 5 units

## DISTANCE FORK 0,5 FOR MOZART TRIMMING KNIFE

16.14027

For PVC

## DISTANCE FORK 0,7 FOR MOZART TRIMMING KNIFE

16.14028

For Linoleum



## QUARTER MOON KNIFE

16.14040

For trimming welding wire. Both sides sharpened.



## QUARTER MOON KNIFE, ANGLED

16.14041

For trimming welding wire. One side sharpened.



## LEATHER CASE FOR QUARTER MOON KNIFE

16.14042



## TRIM GUIDE

16.14050

For quarter moon knife



## DIAMOND KNIFE SHARPENER

16.13865

Double sided grit 400 and grit 600, size 150x60mm.  
To sharpen knives e.g. quarter moon knife.  
Comes in a box with non-slip underlay.



## ERASER

16.13861

80x50x20mm. Recommended for removing slightly burned or shining stains.  
For grinding, polishing, matting or cleaning metal, paint, wood, ceramic  
and plastic materials.



## HOLLOW PUNCH

for repair of floor coverings

Ø 30mm  
Ø 40mm

15.12675  
15.12676

# LINOLEUM AND PVC INSTALLATION TOOLS



## LINO ROLLER

Pressure rollers, zined

4parts, 50kg, width 500mm  
3parts, 34kg, width 370mm

15.13620  
15.13630

## TRANSPORT CARDLE FOR LINO ROLLER

Suitable for 50kg and 34 kg lino rollers.

With elastic wheels.



15.13635



## PRESSURE ROLLER RO-26

With 26 ball bearings for comfortable and firm pressing the seam when laying LVT vinyl design flooring, linoleum and PVC, carpet etc.

Through the patented design an optimized force distribution is reached, the seam can be pressed bubble-free up into the edge area.

Working width 130mm with a total of 26 ball bearings.

16.14030



## PRESSURE ROLLER WITH SOLID HANDLE

To press the seam when laying elastic floor coverings and press down the groove on click coverings.

With 2 rolls 40mm wide.  
Length 195mm.

16.14033



## PRESSURE CORK

300 x 120 x 25 mm

15.13510



## PRESSURE HAMMER

Made of one piece, forged, with polished claw hammer

15.12840



## BROOM WITH HORSE HAIR 60cm

without handle

15.14360



## BROOM WITH SYNTHETIC HAIR (ARENGA) 60cm

without handle

15.14361



## STEEL HANDLE FOR BROOM AND SPREADING KNIVES

15.14364

# LINOLEUM AND PVC INSTALLATION TOOLS



## COLD WELDING LIQUID 1 LITRE

16.14100

Premium cold welding liquid for cold welding PVC and CV.  
Recommended by all well-known manufacturers.  
In conjunction with Working tool 1 or 2, for 300 – 400m seam.



## WORKING TOOL WITH NOZZLE 1 (A)

16.14090

For cold welding liquid, for new, tightly cut seam (<1mm).  
Bottle with thin needle nozzle.



## WORKING TOOL WITH NOZZLE 2 (C)

16.14120

For cold welding liquid or repair paste, for old, badly cut seams,  
shrinkings and PVC base weldings (>1mm).  
Bottle with round nozzle to pour liquid in it.



## WORKING TOOL WITH NOZZLE 2 (C) SPEZIAL

16.14150

For repair paste, for PVC wall coverings.  
Bottle with slotted nozzle (extra wide nozzle).



## REPAIR PASTE 1 LITRE

16.14130

Used with working tools 16.14120 or 16.14150, for 200m seam.



## CLEANING BOTTLE

16.14160

Includes cleaning liquid for cleaning and storing used nozzles.



## PVC-PASTE REMOVER 1 LITRE

16.14170

For cleaning and matt finishing of dirty and shiny seams.



## COLD WELDING LIQUID IN TUBES

Premium cold welding liquid for cold welding PVC and CV. Recommended  
by all well-known manufacturers. Tube of 50g for approx. 25m seam.

## TUBE WITH NOZZLE 1 FOR NEW SEAMS <1mm

16.14180

Per unit

## TUBE WITH NOZZLE 2 FOR OLD SEAMS >1mm

16.14190

Per unit



# CARPET INSTALLATION TOOLS



## KNEE KICKER DE LUXE

13.11490

For carpet stretching.  
Adjustable length and pin depth.



## KOMBI STRETCHER (MINISTRETCHER)

13.11630

For carpet stretching. 2 heads with pins, with ratched handle and repair head. Delivery in a box.



## HEAT BOND IRON 230 Volt

13.11720

With teflon-coated base.



## SUPER-GOLDEN SEAMING TAPE 60g

14.11730

For woven carpets, jute materials and synthetic back or very rough back.

Roll of 50m



## STRIP CUTTER

15.12420

For cutting carpets, for base boards.  
Adjustable from 45 – 100mm.

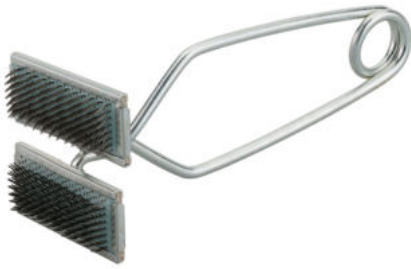
## BLADES FOR STRIP CUTTER

15.12560

Pack of 100 units



# CARPET INSTALLATION TOOLS



## CARPET SEAM SQUEEZER

13.11650

For clamping together the carpet head seams.



## MOULDING LIFTER 250mm

15.12280



## STAIR TOOL 90mm

15.12290



## CARPET SEAM ROLLER 127mm

15.11661

With stars.



## PILE BRUSH

15.11660

For seam treatment by tapping movements during fabrication.  
Dimensions: 18x5x4cm



## CARPET AWL

15.12300

Carpet awl - row finder



## CARPET CLAMP DE LUXE

17.14630

A must-have, additional to our stripper machines!  
Ergonomic design, made of a special aluminum-alloy.

# PARQUET AND LAMINATE INSTALLATION TOOLS



## PARQUET RING 150mm

19.15714

Innovative tool for laying fully glued parquet. The parquet strips are pressed with a gentle impact movement and moved in the adhesive bed.



## PARQUET SHUNTING TOOL 55cm

19.15701

Robust model, with PE-anvil, beveled point.



## TAPPING BLOCK UNIVERSAL

19.15704

Made of Polyethylene, with 2 working edges, 300x70mm.



## TAPPING BLOCK 6mm

19.15705

Made of Polyethylene, 6mm x 400mm for laminate.



## TAPPING BLOCK 11mm

19.15706

Made of Polyethylene, 11mm x 400mm for parquet.



## TAPPING BLOCK FLAT

19.15707

Made of Polyethylene, 400mm for laminate and parquet.



## RUBBER HAMMER WHITE 800g

15.12830



## RUBBER HAMMER WHITE 1000g

15.12832

Very high-quality execution.  
Coated with white rubber.



## ENGINEERS HAMMER 500g

15.12870

TÜV/GS tested



## ENGINEERS HAMMER 300g

15.12860

TÜV/GS tested

# PARQUET AND LAMINATE INSTALLATION TOOLS



## LVT FLOORING CUTTER IS-333

24.71135

For cutting LVT and cork floorings up to 16mm thickness.

### Technical specifications:

Blade width: 330mm

Max. thickness: 16mm

Dimensions: 630x440x350mm

Cutting angle: 0-45°



## PARQUET STRIPPING BLADE

Blade of hardened steel, sharpened, with wooden handle.

40 mm

60 mm

90 mm

19.15730

19.15740

19.15750



## SCRAPER WITH HANDLE

19.15780

Universal tool with handle for higher power transmission when pulling on wooden floors.



## BLADE FOR PARQUET SCRAPER

19.15785

40mm wide



## RUBBER SPATULA 300mm

15.13320

For precoating



## CLEANING TISSUES

22.12980

For cleaning hands, tools and machines.

For removing adhesives, oil, fat, wax, paint, silicon, acryl, bitumen, tar, graphite etc.

Cleaning without water and soap, without residuum.

Biodegradable.

Bucket of 72 tissues.



## LEVELING SPATULA

15.13086

Stainless, with adjustable side edge from 2–15mm.

# INSTALLATION TOOLS



## FLEX SPATULA (DOUBLE BLADE)

To apply and plane liquid materials.  
Classical straight blade, rounded edges.

200 mm  
270 mm  
350 mm

15.13098  
15.13099  
15.13091



## SPIKED ROLLER

With integrated splash guard.  
Without handle, suitable for telescopic handle 19.15815.

250mm x 11mm  
250mm x 31mm

15.13475  
15.13469

500mm x 11mm  
500mm x 22mm  
500mm x 31mm

15.13480  
15.13481  
15.13483

750mm x 11mm

15.13485



## SPIKED ROLLER WITH STAINLESS STEEL SPIKES

With integrated splash guard.  
Without handle, suitable for telescopic handle 19.15815.

250mm x 13mm  
500mm x 13mm

15.13477  
15.13484



## HOBNAILED SHOES 25mm

With 25mm nails and fastening straps.

15.13460

## HOBNAILED SHOES 50mm

With 50mm nails and fastening straps.

15.13462



## SPIKE SHOES

With approx. 20mm long nails.

Size: L suitable for shoe size up to 46  
Size: XL suitable for shoe size 46 up to 51.5

15.13463  
15.13473



## SPARE NAILS FOR SPIKE SHOES

Set consisting of 32 nails (spikes), nuts, washers and assembly tool

15.13474



## FINISHING TROWEL

Stainless steel, size 280x135mm

15.13350



## FINISHING TROWEL

Blade hardened and polished.

300mm  
400mm  
500mm

15.13360  
15.13370  
15.13380



## FINISHING TROWEL FLAT

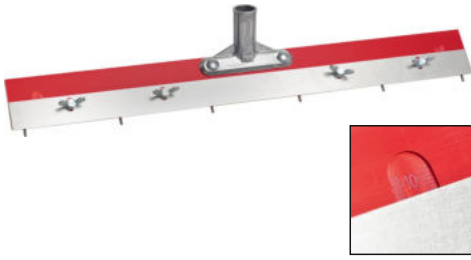
Blade hardened and polished.

400mm  
500mm

15.13390  
15.13410



# INSTALLATION TOOLS



## PIN LEVELLER

15.13466

Professional tool for applying adhesive and leveling compounds.  
Base profile 600mm with 6 replaceable spikes.  
Applying height is adjustable from 0 to 11mm due to a stainless shim.  
(without telescopic handle)

## REPLACEMENT PINS UP TO 11mm

15.13457

Set of 12 spikes.



## SPREADING KNIFE FLAT

15.13451

For applying different materials, for universal use.  
With wooden frame and flat, stainless blade 600mm.  
(without telescopic handle)



## SPREADING KNIFE WITH NOTCHED INSERT R1

15.13450

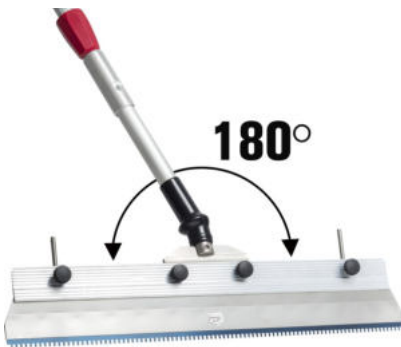
For applying adhesive and leveling compounds. With wooden frame and clamp to add notched inserts 560mm.  
Delivery including: 1 unit notched insert R1 (compare 15.13295), holder for poles e.g. telescopic arm (without telescopic handle)



## SPREADING KNIFE WITH NOTCHED INSERT R2 AND 2 PINS

15.13453

Professional tool for applying adhesive and leveling compounds on big areas in ergonomical upright position. Including 1 unit notched insert R2 56cm and a stainless shim for setting different levels. Delivery including holder for poles e.g. telescopic arm (without telescopic handle)



## MOVABLE JOINT WITH TELESCOPIC HANDLE

15.13458

Innovative moveable joint for notched and spiked trowels for applying adhesive and leveling compounds. Ergonomic working in the cross and transverse.

- 180° movable stainless steel joint head
- shaft made of aluminum tube
- telescopic rod adjustable to the respective body size of the user

Suitable to spreading knife R1, R2 and pin leveller.

## MOVABLE JOINT WITH SPREADING KNIFE R2

15.13454

Movable joint including telescopic handle and spreading knife R2 article 15.13453

## MOVABLE JOINT WITHOUT TELESCOPIC HANDLE

15.13468

## TELESCOPIC HANDLE FOR MOVABLE JOINT

19.15818



## R1-NOTCHED INSERTS

15.13295

560mm 3,0x4,0x1,5mm, pack of 10 units



## R2-NOTCHED INSERTS

15.13281

560mm 5,0x4,0x2,0mm, pack of 10 units



## R3-NOTCHED INSERTS

15.13315

560mm 5,0x6,0x2,4mm, pack of 10 units



## COPPER TAPE 0,08 x 10mm SELF-ADHESIVE

19.13944

To discharge electrostatic charging.  
Roll of 50m.

# INSTALLATION TOOLS



## ADHESIVE SPATULA 180mm

Blade hardened and polished.  
Pack of 10 units

A1	15.13056
A2	15.13050
A3	15.13051
B1	15.13057
B2	15.13058
B3	15.13054
B5	15.13055
B6	15.13053
B7	15.13043
B10	15.13044
B11	15.13045
B13	15.13047
B15	15.13052
Spatula flat	15.13059



## ADHESIVE SPATULA 210mm

Blade hardened and polished.  
Pack of 10 units

A1	15.13060
A2	15.13062
A3	15.13063
B1	15.13070
B2	15.13080
B3	15.13072
B5	15.13071
B6	15.13073
B11	15.13066
B15	15.13068
Spatula flat	15.13061



## ADHESIVE SPATULA 250mm

Blade hardened and polished.  
Pack of 10 units

A1	15.13081
A2	15.13085
B1	15.13082
B2	15.13083
B3	15.13084
B13	15.13079



## INTERCHANGABLE SPATULA

Blade hardened and polished,  
to use notched inserts.  
Pack of 10 units.

180 mm	15.13090
210 mm	15.13160
280 mm	15.13230



## ALUQUICK

Ergonomic spatula to use notched inserts, made of aluminum

180 mm	15.13300
280 mm	15.13310



## THRESHOLD RULER

Adjustable 75-110cm, stainless.

15.13540
----------

# INSTALLATION TOOLS

## NOTCHED INSERTS 180mm

For interchangeable spatulas and Aluquick, wear-resistant, pack of 10 units.

A1  
A2  
A3  
A4  
A5

B1  
B2  
B3  
B5  
B6  
B11  
B15  
B16

15.13100  
15.13140  
15.13150  
15.13151  
15.13152

15.13110  
15.13120  
15.13130  
15.13132  
15.13134  
15.13133  
15.13135  
15.13139

## NOTCHED INSERTS 210mm

For interchangeable spatulas and Aluquick, wear-resistant, pack of 10 units.

A1  
A2  
A3  
A4  
A5

B1  
B2  
B3  
B5  
B6  
B11  
B15

S1 (Non Statik K)  
S2 (Non Statik TL)  
S3

15.13170  
15.13210  
15.13220  
15.13221  
15.13222

15.13180  
15.13190  
15.13200  
15.13202  
15.13204  
15.13203  
15.13205

15.13223  
15.13224  
15.13225

## NOTCHED INSERTS 280mm

For interchangeable spatulas and Aluquick, wear-resistant, pack of 10 units.

A1  
A2  
A3  
A4  
A5

B1  
B2  
B3  
B5  
B6  
B11  
B15

C1  
C2  
C3  
C4

S1 (Non Statik K)  
S2 (Non Statik TL)

15.13240  
15.13280  
15.13290  
15.13291  
15.13292

15.13250  
15.13260  
15.13270  
15.13282  
15.13271  
15.13299  
15.13284

15.13296  
15.13297  
15.13289  
15.13298

15.13293  
15.13294



Original size

# INSTALLATION TOOLS



## ROLLER "MOHAIR"

19.15801

Professional roller cover made of Velour, 4mm pile height, 250mm wide, for 8mm bow. Delivery without bow.



## ROLLER "PACIFIC"

19.15803

Professional roller with a special polyester blend cover, 11mm pile height, 250mm wide, for 8mm bow.

Suitable for coating and sealing of soils with aqueous systems. Delivery without bow.



## ROLLER "INDUSTRIA"

19.15810

Professional roller with nylon cover, 12mm pile height, 250mm wide, for 8mm bow. Well suited for floor coatings. Delivery without bow.



## ROLLER "FOAM"

19.15811

Professional roller made of foam material, rounded on both sides, 80 mm outer diameter, 250mm wide, for 8mm bow. Suitable for sealing. Delivery without bow.



## BOW FOR ROLLER 8mm

19.15813

for 250mm roller.



## PRECOAT AND ADHESIVE ROLLER

19.15805

250mm with bow and unroll grid. For simple coatings, adhesive application, etc.



## PRECOAT AND ADHESIVE ROLLER WITHOUT GRID

19.15806

250mm for 8mm bow. For simple coatings, adhesive application, etc.



## TELESCOPIC HANDLE

19.15815

Adjustable till 2m. Suitable for Spiked spreading knives, spiked rollers and rolls. Made of aluminium, solid model.



## WIPER FOR ROLLERS

19.15808

For cleaning color and paint rollers. Excess liquids are stripped off the roll back into the designated container.



# MOISTURE METERS



## CCM MOISTURE MEASURING INSTRUMENT

20.14396

Calcium-Carbide-measuring-instrument for measuring moisture in screed. With shock-proof manometer. Direct reading of the CM%. Including: 20 carbide ampoules, 100g scale, beaker, hammer, lump hammer, flat chisel, steel ball set (4) and accessories. In metal carrying case.

## CCM MOISTURE MEASURING INSTRUMENT ECO

20.14398

The entry-level model for occasional measurements, very good price-performance ratio. Equipped with mechanical manometer with a maximum pressure range up to 1,6 bar and a robust precision spring scale, delivery in a robust plastic carrying case. (without picture)



## CARBIDE AMPOULES FOR CCM INSTRUMENT

Pack of 25 units  
Pack of 100 units

20.14400  
20.14410

## TESTING AMPOULES FOR CCM INSTRUMENT

20.14391

10 x 1 gram



## HYDROMETTE COMPACT B

20.14610

The Hydromette Compact B is an electronic moisture indicator with a non-destructive measuring method based on the dielectric constant/high-frequency measuring principle.

With LCD display and flexible ball probe for detecting moisture in all types of building materials as well as for detecting the moisture distribution in walls, ceilings and screeds and other set building materials.

Recommended as a preliminary test device for all CCM measuring instruments!



## HYDROMETTE COMPACT B2

20.14616

The Hydromette Compact B2 is an electronic moisture indicator for a non-destructive measurement of moisture in building materials. It uses the dielectric constant measuring / high frequency principle. The ball probe can be applied flexibly and is used for the detection of moisture in all kinds of building materials. It is also suitable for checking the dispersion of moisture in walls, ceilings and floors. The Hydromette has an audible alarm, which will resound if the values exceed the limit. Limits for the building materials can be set individually. An ideal pretester for use with all "CM" devices. The device is delivered fully equipped with battery and plastic box.

Features:

- direct readings for 7 types of building materials and 2 types of insulating materials as well as tendential indication for hard and soft wood
- acoustic alarm function
- automatic calibration
- indication of the device's temperature/ambient temperature



## CAISSON MOISTURE TESTER GM-200

20.14425

For measuring moisture in concrete, plaster, cement and wood.

The measurement is carried out using a measuring ball and is therefore non-destructive. Including hold function of the last measured value.

Extremely user-friendly thanks to its compact dimensions and high display resolution. 9 measuring scales for different materials: Relative scale (%), anhydrite screed (wt%), anhydrite screed (CM%), cement screed (wt%), cement screed (CM%), concrete (wt%), gypsum plaster (wt%), hardwood (wt%), softwood (wt%).

Recommended as a preliminary test device for CCM devices to determine the wettest spot.

# MOISTURE METERS



## CAISSON MOISTURE TESTER VI-D1

20.14420

Very easy to use – switch ON – apply to the surface – read off digital result – compare with chart.

Especially for concrete and screed, as well as wood.  
Non destructive measurement. Digital LCD. Measure depth till 3cm.  
Measure sensor located at the bottom. Automatic power switch OFF.  
With battery. Soft leather carrying case included.  
Ideal pre-tester for CCM to find the moistest area.



## CAISSON MOISTURE TESTER VI-D4

20.14421

Moisture meter for concrete and screed moisture.

The meter has different scales for measuring moisture in different materials.  
The gold-plated spring electrodes measure via electrical resistance. The 2 sensor plates use dielectric properties to measure the moisture content of the soil down to a few centimeters deep. The combined result of the measurement is output via the display.  
The high-quality transfective graphics display guarantees perfect readability of the values under all lighting conditions even in bright daylight.

Recommended as a pre-tester for CCM devices to determine the wettest point.



## CAISSON THERMO-HYGROMETER LVT 15 IR

20.14426

Very easy to use - switch ON - adjust temperature or humidity measuring - lift the meter in the air - read digital result. For fast measuring of air temperature and air humidity, measuring in °C or F.

With dew point table on the rear side of the measuring instrument. Automatic power switch OFF. With battery. Soft leather carrying case included. With calibration certificate.

Temperature: from -10 till +50°C  
Humidity: from 5% to 99%  
Humidity tolerance: +/2%  
Temperature tolerance: +/0,3°C



## GANN THERMO-HYGROMETER BL COMPACT TF-3

20.14626

The BL Compact TF 3 unit is a precise thermo hygrometer for measuring the temperature and air relative humidity in many applications (e.g. residential space, air conditioning, printing shops, warehouses, museums). The measuring sensor is exchangeable. Several of these sensors (plug-in TF stick) can be put in different places (environments). Thus, successive measurements in those places can be carried out more quickly, for long adaption times can be avoided (compared to a meter with fixed sensor).

Features:

- Handy pocket-sized moisture measuring meter for fast measurements
- Display of three values via LCD, resolution: 0.1 % or 0.1 °C
- Automatic calculation of dew point temperature
- Display of absolute air humidity in g/m<sup>3</sup>
- USB interface for transferring the measured values to a PC
- Min, Max and Hold functions for measured values
- Storage of the 5 most recent measured values
- Power supply: a 9-volt battery is included C



## KRL-MEASURING CHAMBER

20.14412

The KRL measurement method determines the moisture content of the material by determining the corresponding relative humidity above the mineral screed.

Use in conjunction with the Caisson moisture tester VI-D4 or LVT 15 IR and the climate sensor.

## CAISSON CLIMATE SENSOR CS-10

20.14413

Use in conjunction with the Caisson moisture tester VI-D4 or LVT 15 IR for determining the moisture content using the KRL measuring method.

# MEASURING INSTRUMENTS



## SURFACE HARDNESS TESTER RI-RI

16.14074

For measuring of surface bonds and strength according to „scribe fences“.  
Consists of 2 parts, punched sheet (stainless) and a special hard metal pencil.



## MEASURING WEDGE

15.12313

Aluminum 0-20mm,  
for measuring uneven subfloors.



## STEEL ANGLE

15.13520

100 x 50cm zincd



## STEEL RULER

Stainless, slightly roof-shaped,  
8cm wide, furled.

205 cm  
405 cm  
505 cm

15.13590  
15.13600  
15.13610



## T-HEAD 50cm

15.13588

For steel rulers, to adjust 90°



## TEMPLATE KIT FOR STAIR STEPS

16.14080

The 6 arms of different length are positioned and settled at the corners  
of the step. That way the dimension of the step can be transferred fast and  
exactly on to the flooring.



## LASER DISTANCE METER R40

20.14470

Including the basic functions for precise measurements: L/W/H, volume.  
Modern and compact device with high- quality display.

- all basic functions for precise measurements are available (L/W/H, volume)
- with integrated spirit level
- up to three measurements can be saved
- shockproof
- laser: 0.05 to 40m
- accuracy: +/-2mm

# ABRASIVES



## ABRASIVES Ø 380mm

For single disc machines, double sided, used with drive disc 19.14211. Premium quality for professionals. Silicium carbide on cloth/paper. Pack of 10 units.

Grit 16  
Grit 24  
Grit 36  
Grit 40  
Grit 60  
Grit 80  
Grit 100  
Grit 120

19.14220  
19.14230  
19.14235  
19.14240  
19.14250  
19.14260  
19.14270  
19.14267



## ABRASIVES Ø 400mm

For single disc machines, double sided, used with drive disc 19.14211/12. Premium quality for professionals. Silicium carbide on cloth/paper. Pack of 10 units.

Grit 16  
Grit 24  
Grit 36  
Grit 40  
Grit 60  
Grit 80

19.14271  
19.14272  
19.14263  
19.14273  
19.14274  
19.14275



## PAD HOLDER Ø 380mm

For Superpads and Normalpads, with exchangeable spiked plate.

19.15340

## SPIKED PLATE

400mm for pad holder 19.15340

52.00389



## SUPERPADS 20mm Ø 406mm

Used with pad holder 19.15340. From black to white decreasing hardness density. Pack of 5 units.

Black for rough cleaning  
Green for cleaning (thorough cleaning)  
Red for softer cleaning of sensitive floors  
Beige for waxing, polishing and sensitive cleaning  
White for polishing

19.15350  
19.15360  
19.15370  
19.15380  
19.15390



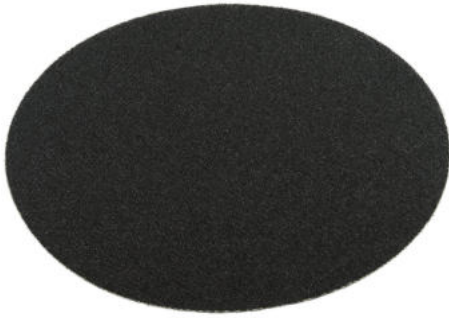
## NORMALPADS 8mm Ø 406mm

Used with pad holder 19.15340. From black to white decreasing hardness density. Pack of 10 units.

Black for rough cleaning  
Green for cleaning (thorough cleaning)  
Red for softer cleaning of sensitive floors  
Beige for waxing, polishing and sensitive cleaning  
White for polishing

19.15351  
19.15361  
19.15371  
19.15381  
19.15391





## SANDING NETS Ø 406mm

Used with pad holder and pad.  
Pack of 10 units

Grit 60  
Grit 80  
Grit 100  
Grit 120  
Grit 150  
Grit 180

19.15400  
19.15410  
19.15420  
19.15430  
19.15435



## SUPERFINISHING-PADS Ø 406mm

Used with pads and pad holder.  
Pack of 10 units

For the final finish of wooden floors and parquet with parquet sanding machine WOODY and all customary single disc machines.

Patented texture due to the multihole surface you get a nearly dustfree sanding, loading of the pad is reduced. With high removal performance and longer service life.

Grit 60  
Grit 80  
Grit 100  
Grit 120  
Grit 150

19.15510  
19.15515  
19.15520  
19.15525  
19.15530



## WOOL PAD Ø 410mm

Nonabrasive. Thickness 5mm.  
For the suction, or removal, excess oils & waxes.  
Pack of 10 units

19.15550



## TURBO FIBERPAD

Ø 406mm for single disc machines  
Ø 150mm with Velcro for edge sander

19.15560  
19.15570

The unique Fiberpad was developed for the final sanding of parquet floors and the deep cleaning of various surfaces such as wood and stone.

For the fine sanding of parquet floors, the Fiberpad replaces the classic sanding discs with 80 and 100 grit.

Thanks to the open fiber structure, the fiber pad offers a very high sanding performance and excellent dust extraction while also ensuring a scratch-free finish.

# ABRASIVES

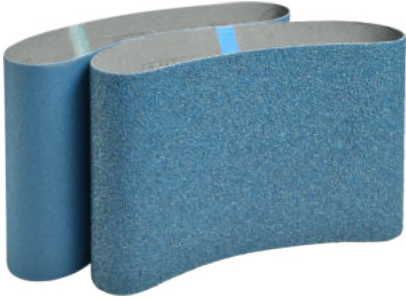


## CERAMIC-SANDING BELTS 750x200mm

Ceramic corundum for extremely high grinding performance and service life thanks to the special self-sharpening of the ceramic grain.  
Pack of 10 units.

Grit 36  
Grit 50

24.60036  
24.60060



## ZIRCON-SANDING BELTS 750x200mm

Standard size, suitable for all customary belt sanders.  
Premium quality for professionals, made of heavy X-cloth with fully resin bonding.  
Grain: Zirconia, belts with waved joint.  
Pack of 10 units.

Grit 24  
Grit 36  
Grit 40  
Grit 60  
Grit 80  
Grit 100  
Grit 120

24.50024  
24.50036  
24.50040  
24.50060  
24.50080  
24.50100  
24.50120



## SANDING BELTS 750x200mm

Standard size, suitable for all customary belt sanders. Premium quality for professionals, made of heavy X-cloth with fully resin bonding. Grain: Aluminum Oxid, belts with waved joint. Pack of 10 units.

Grit 16  
Grit 24  
Grit 36  
Grit 40  
Grit 60  
Grit 80  
Grit 100  
Grit 120

24.00016  
24.00024  
24.00036  
24.00040  
24.00060  
24.00080  
24.00100  
24.00120



## ZIRCON-VELCRO SANDING DISCS Ø 178mm

Zircon for significantly higher grinding performance and service life.  
Pack of 50 units.

Grit 24  
Grit 36  
Grit 40  
Grit 60  
Grit 80  
Grit 100

24.22024  
24.22036  
24.22040  
24.22060  
24.22080  
24.22100



## VELCRO SANDING DISCS Ø 178mm

Premium quality for professionals. Grain: white Aluminum Oxid.  
Pack of 50 units.

Grit 16  
Grit 24  
Grit 36  
Grit 40  
Grit 60  
Grit 80  
Grit 100

24.23016  
24.23024  
24.23036  
24.23040  
24.23060  
24.23080  
24.23100



## CERAMIC-VELCRO SANDING DISCS Ø 150mm

Ceramic corundum for extremely high grinding performance and service life thanks to the special self-sharpening of the ceramic grain.  
Pack of 25 units.

Grit 36  
Grit 40  
Grit 50  
Grit 60  
Grit 80

24.85036  
24.85040  
24.85050  
24.85060  
24.85080



## ZIRCON-VELCRO SANDING DISCS Ø 150mm

Zircon for significantly higher grinding performance and service life.  
Pack of 50 units.

Grit 24  
Grit 36  
Grit 40  
Grit 60  
Grit 80  
Grit 100

24.84024  
24.84036  
24.84040  
24.84060  
24.84080  
24.84100



## VELCRO SANDING DISCS Ø 150mm

Premium quality for professionals. Grain: white Aluminum Oxid.  
Pack of 50 units.

Grit 16  
Grit 24  
Grit 36  
Grit 40  
Grit 60  
Grit 80  
Grit 100

24.83016  
24.83024  
24.83036  
24.83040  
24.83060  
24.83080  
24.83100



## VELCRO SANDING DISCS Ø 150mm 9-HOLES

8 suction holes 1 center hole. For normal orbital sander.  
Premium quality for professionals. Grain: white Aluminum Oxid.  
Pack of 50 units.

Grit 24  
Grit 36  
Grit 40  
Grit 60  
Grit 80  
Grit 100  
Grit 120  
Grit 150

24.91024  
24.91036  
24.91040  
24.91060  
24.91080  
24.91100  
24.91120  
24.91150



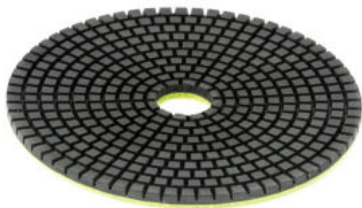
## VELCRO SANDING DISCS Ø 125mm

Premium quality for professionals. Grain: white Aluminum Oxid.  
For Edge sander ROMO-125.  
Pack of 50 units.

Grit 40  
Grit 60  
Grit 80  
Grit 120

24.70540  
24.70560  
24.70580  
24.70595

# ABRASIVES

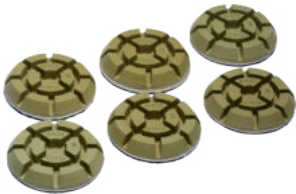


## DIAMOND PADS Ø 125mm WITH VELCRO

with dense diamond structure, long service life and high flexibility.  
Can also be used with ROMO-125 resp. RO-125 in combination with wood sanding kit.  
Per unit

- Grit 50
- Grit 100
- Grit 200
- Grit 400
- Grit 800
- Grit 1500
- Grit 3000

- 19.14605
- 19.14610
- 19.14615
- 19.14620
- 19.14625
- 19.14630
- 19.14635



## DIAMOND POLISHING PADS Ø 75mm WITH VELCRO

Resin diamond polishing pads for universal use for dry polishing and perfect fine sanding. Long service life due to high diamond content.

- Grit 60
- Grit 120
- Grit 220
- Grit 400
- Grit 800
- Grit 1500

- 17.16960
- 17.16962
- 17.16964
- 17.16966
- 17.16968
- 17.16970



## SANDING PAD

For Multimaster and Supercut, set of 2 units

- 19.14936



## SANDING PAPER

For Multimaster and Supercut (with adapter)  
Pack of 50 units, without holes

- Grit 40
- Grit 60
- Grit 80
- Grit 100
- Grit 120

- 19.14931
- 19.14932
- 19.14933
- 19.14934
- 19.14935



## BLADES - MADE IN SOLINGEN

Premium „Solling“ quality.  
High-alloyed tool steel 0,65mm, ice-hardened.  
Pack of 10x10 units = 100 units. 10 units in a dispenser.

Trapezium blade  
Trapezium blade, large  
Hooked blade  
Hooked blade, large

15.12450  
15.12460  
15.12470  
15.12490

## BLADES WITH TITAN COATING

Premium „Solling“ quality. High-alloyed tool steel 0,65mm, ice-hardened.  
With Titan-coating for a long endurance.  
Pack of 10x10 units = 100 units. 10 units in a dispenser.

Titan-Trapezium blade  
Titan-Trapezium blade, large  
Titan-Hooked blade  
Titan-Hooked blade, large

15.12455  
15.12465  
15.12475  
15.12495

## TRAPEZIUM-HOOK BLADES

Two in one, ice-hardened  
0,65mm, premium „Solling“ quality.  
Pack of 10x10 units = 100 units.

15.12480

## CONCAVE BLADES

Ice-hardened 0,65mm  
Pack of 10x10 units = 100 units.

15.12485

## BREAK-OFF BLADES 18mm

Ice-hardened, for cutter knives 15.12494, 15.12596  
Pack of 10x10 units = 100 units.

15.12590

## BREAK-OFF BLADES 18mm WITH TITAN COATING

Ice-hardened, with Titan-coating for a long endurance.  
For cutter knives 15.12494, 15.12596  
Pack of 10x10 units = 100 units.

15.12591

## MOZART BLADES

Premium „Solling“ quality.  
High-alloyed tool steel 0,65mm, ice-hardened.  
Pack of 10x10 units = 100 units. 10 units in a dispenser.

MOZART trapezium blade  
MOZART hooked blade  
MOZART hooked blade, large

15.12452  
15.12472  
15.12491



# KNIVES



**ROLL FLOOR INSTALLER KNIFE WITH HOLSTER**

15.12548

Easy and fast blade changing without tool. Magnet included.  
Premium quality for professionals.



**DELPHIN-KNIFE WITH HOLSTER**

15.12550



**SHARK-KNIFE WITH HOLSTER**

15.12555



**LEATHER KNIFE HOLDER FOR PROFESSIONALS**

22.14471

for 2 knives, incl. blade dispenser and pen holder.

**LEATHER KNIFE HOLDER FOR PROFESSIONALS IN SET**

22.14472

In set with:

- 2x ROLL installers knife
- 2x Blades dispenser each 10 blades
- 1x Pica-Dry® Longlife Automatic Pencil



**UNIVERSAL KNIFE MOZART S2**

15.12525

Including protecting cap and blade.

- compact design and the legendary SCHILLERshape
- coated surface for extra grip
- tool-free and magnet-supported easy blade change
- transparent protective cap for safe transportation
- tough fixation of blade
- hardened blade fixture for longer life time
- cartridge for up to 10 blades



**ROLL CUTTER KNIFE**

15.12598

High-quality cutter knife with metal magazine for 18mm break-off blades.  
Incl. 6 break-off blades.



**CUTTER KNIFE NT**

15.12494

Premium knife made of metal with rapid magazine.  
Incl. 3 break-off blades 15.12590.



**CUTTER KNIFE LIGHT**

15.12596

Incl. break-off blade.



**HANDLE FOR SPECIAL BLADES**

15.12630

Without blade

**BLADE NR. 22**

15.12610

For handle 15.12630  
Pack of 10 units

# SCISSORS AND CUTTERS



## MITRE CUT SHEAR 6cm

15.12800

For wooden and plastic profiles. 2 x 45 degree blocks.



## MITRE CUT SHEAR LONG

15.12795

With stop faces at 45° and 75 mm length of cut.  
For wooden and plastic profiles. Suited to mitre cuts in wide materials.



## MITRE CUT SHEAR WITH TRAPEZIUM BLADE

15.12797

With stop faces at 45° and 50 mm length of cut.  
For the particularly fine and filigree cut (f.ex. linoleum).



## MITRE CUT SHEAR WITH LEVER

15.12796

Suited to right-angled cuts in hard and flat plastic items, e.g. plastic, PVC, rubber and wooden profiles. With stop faces at 90° and 75mm length of cut. Essential for floor layers, painters, carpenters, and many other trades.

It develops its power during the cutting process and develops its greatest effect at the end of the cut - where the force is strongest and the cut would cost a normal scissors great effort. With the help of leverage, the material is cut through with ease.



## UNIVERSAL-CUTTER RED

15.12400

For woven carpets with jute and double back. 10 blades included.



## UNIVERSAL-CUTTER BLUE

15.12410

For carpets with foam back. 10 blades included.



## LOOP PILE CUTTER "BLACK"

15.12441

For all textile coverings, except foam backing. Cuts from top to bottom.  
10 blades included.



## LOOP PILE CUTTER

15.12440

With guiding rail for woven carpets.

## BLADES FOR LOOP PILE CUTTER

15.12570

Pack of 100 units

# SCISSORS



**CARPET SCISSORS 10" (25cm)**

Premium quality. Nickel blades, black varnished handle.

15.12690



**CARPET SCISSORS 10" (25cm) FOR LEFT-HANDERS**

Premium quality. Nickel blades, black varnished handle.

15.12700



**CARPET SCISSORS 12" (30cm)**

Premium quality. Nickel blades, black varnished handle.

15.12710



**NAP SCISSORS 6" (15cm) ANGLED**

Premium quality. Nickel blades, bent, plastic coated handle.

15.12720



**NAP SCISSORS 7" (18cm) ANGLED**

Premium quality. Nickel blades, bent, plastic coated handle.

15.12725



**BINDING SCISSORS 8" (20cm) ANGLED**

Premium quality. Nickel blades, bent, plastic coated handle.

15.12715



**UNIVERSAL SCISSORS 8" (20cm)**

Stainless. „Solingen“ quality, stainless.

15.12735



**UNIVERSAL SCISSORS 10" (25cm)**

Stainless. „Solingen“ quality, stainless.

15.12750



# MIXERS AND MIXING RODS

## MIXER RO-1400

15.12378

Powerful mixer with 1400 Watt and 2-speed gear unit.

Powerful motor for demanding mixing jobs with loads up to 50 kg.  
With soft start which prevents uncontrolled spraying of the mixing materials.  
With ergonomic soft handle.

### Technical specifications:

Power: 1400 Watt, 230 Volt  
Rotation 1: 150-300 rpm  
Rotation 2: 300-650 rpm  
Collet: M14  
Weight: 8,00kg  
Max. mixing quantity: 50kg  
Max. mixing tool: 140mm



## MORTAR MIXING TOOL 140mm M 14

15.12393

Universal use for heavy and highly viscose compounds  
e.g. mortar, plaster, tile adhesive, lime, concrete, cement, screed, filler, epoxy etc.  
Till 50kg.



## SPINDLE MIXING TOOL 120mm M 14

15.12399

Universal use for ductile and highly viscose compounds  
e.g. mortar, plaster, gypsum, lime, rendering, tile adhesive, filler etc.  
Till 50kg.



## STANDARD MIXING TOOL 120mm M 14

15.12396

Ideal for mixing adhesives, sealing compounds, screed,  
bitumen coatings etc.  
Till 25kg.



## 2-WINGS MIXING TOOL 120mm M 14

15.12385

Special mixing tool for liquid and thin viscose materials, adhesives,  
lacquer, paint, primer etc. Tool ensures fast and homogeneous mixing  
without uncontrolled spraying.  
Till 50kg.



# MIXERS AND MIXING RODS



## MIXER HOLDER RO-30

15.12365

New development from ROLL

Flexible and universally usable holder for attaching hand mixers to standard 30 liter mixing buckets.

- time-saving
- back-friendly
- universally adjustable for different hand mixer holders, mixer lengths and bucket diameters (35-39 cm)
- compatible with mixer RO-1400

Delivery without hand mixer and mixing bucket.



## MIXING STATION

15.12355

With this compact mixing station, up to 75 kg of product can be mixed quickly and efficiently.

Easy and safe transport thanks to the well-balanced and multi-adjustable chassis.

Dust-free mix with the optional hose holder to your vacuum cleaner.

Included in delivery:

- chassis for the mixing bucket
- 75 liters mixing bucket
- holder for the mixer



## HOSE HOLDER

15.12356

For dust-free mixing with the mixing station and your vacuum cleaner.



## TURBO MIXING TOOL M16/M14

15.12357

Specially developed for mixing large quantities of material. The turbine effect ensures that no lumps arise.

## EXTENSION FOR MIXER RO-1400

34.00550

Length 50mm, M14 internal / external thread.

# ANTI SLIPPING GRIP TAPES



Schwarz

Transparent

Weiß

Rot

Fluoreszierend

Blau

Braun

Grau

Neongelb

Signalfarbe

## ROLL ANTI SLIPPING GRIP TAPES

Premium, self-adhesive non-slip grip tape, very durable, with excellent characteristics. It can be applied onto most surfaces to provide anti slip protection and safety standards e.g. onto stairs, entrances, ramps, public areas, boats, sanitary areas, trucks and buses.

For outdoor application we recommend to use edge sealer 14.11173.

Black	50mm x 18m	14.11160
Transparent	50mm x 18m	14.11161
White	50mm x 18m	14.11162
Red	50mm x 18m	14.11163
Green	50mm x 18m	14.11164
Grey	50mm x 18m	14.11165
Fluorescent	50mm x 18m (luminous)	14.11166
Blue	50mm x 18m	14.11167
Brown	50mm x 18m	14.11168
Grey	50mm x 18m (aqua safe, quality for bare foot areas)	14.11169
Neon yellow	50mm x 18m	14.11171
Safety color	50mm x 18m (black/yellow)	14.11172
Grey, coarse	50mm x 18m (aqua safe, quality for bare foot areas)	14.11174
Transparent	50mm x 18m (aqua safe, quality for bare foot areas)	14.11175
Black	14mm x 18m (aqua safe, quality for bare foot areas)	14.11200
Grey	14mm x 18m (aqua safe, quality for bare foot areas)	14.11201
Beige	14mm x 18m (aqua safe, quality for bare foot areas)	14.11202
Black	28mm x 18m (aqua safe, quality for bare foot areas)	14.11205
Grey	28mm x 18m (aqua safe, quality for bare foot areas)	14.11206
Safety color	28mm x 18m (black/yellow)	14.11207

Further widths and sizes upon request.

## EDGE SEALER

For anti slipping grip tape, for outdoor applications. Based on PVC, tubes of 50g.

14.11173

## DOUBLE-SIDED ADHESIVE TAPE 50mm x 50m

Pack of 24 rolls.

14.12240

### Technical specifications:

Carrier system: special fabric  
 Pressure-sensitive adhesive: hot-melt adhesive made of synthetic rubber  
 Protective cover: silicone paper, yellow  
 Thickness (without cover): 0.22-0.24 mm  
 Peel resistance:  $\geq 30$  N / 25 mm (DIN EN 1939)\*  
 Shear resistance: 1000 g / 625 mm<sup>2</sup> (DIN EN 1943)\*  
 Recommended working temperature: +10° C to +30° C  
 Temperature resistance: 30°C to +80°C  
 Condensation resistance: very high  
 Resistance to aging: limited  
 Plasticizer resistance: limited

## ADHESIVE INJECTION

With bayonet nut connector and 2 replaceable nozzles.

15.12330



# ASSEMBLY ACCESSORIES



## SPRAY ADHESIVE

Universal use in aerosols, for permanent and temporary adhesion.  
For paper, carton, wood, thin veneers, cork, leather, textiles, felt, foam, styrofoam, rubber etc. (except PVC and polyethylene). Temperature range: from -20 to +65°C

Box of 12 cans each 500 ml  
Single can

18.12960  
18.12961



## POLYMER-ASSEMBLY ADHESIVE

Ready-made 1-component adhesive, solvent-free.  
Very fast curing and extreme strength adhesion, easy to press.  
Can be ground and varnished after curing.

Suitable for all kind of building materials: base boards, door cases, wood, metal and stone, hard PVC.

Heat resistant till +110°C, water proof according to DIN EN 204 D4.  
Recommended for undrilled metal profiles because of flexible curing.

Box of 12 cartridges  
Single cartridge

18.12987  
18.12988



## CARTRIDGE PISTOL "PROFI"

Professional pistol, for cartridges and sealing compounds in tubes.

18.12994



## JOINT CONNECTORS

For renovating cracks in screed. In conjunction with 2- components adhesive.

Pack of 1000 units  
Pack of 100 units

18.12952  
18.12953



## 2-COMPONENTS ADHESIVE

Consists of adhesive (1000g) and hardener (30g).

For fixing grippers and for renovating cracks in screed.  
For all subfloors.  
Setting time approx. 15min.

18.12950



## STEEL NAILS BLANK 1,5mm

Pack of 1000 units  
TEC-steel nails

20 mm  
25 mm  
30 mm  
35 mm  
45 mm

21.12030  
21.12040  
21.12050  
21.12060  
21.12080

## STEEL NAILS ZINC PLATED 1,5mm

Pack of 1000 units  
TEC-steel nails

20 mm  
25 mm  
30 mm  
35 mm  
45 mm

21.12090  
21.12100  
21.12110  
21.12120  
21.12125



# GENERAL WORK EQUIPMENT



## LEATHER KNEE PADS

15.11707

Knee pads with a robust synthetic leather surface and soft neoprene padding.  
Very comfortable because the wide strap which is fixed below the hollow of the knee.  
Dimensions: 22 x 18 x 7cm



## FENTO ORIGINAL KNEE PADS

15.11731

Only 250 grams light and particularly stable knee pads with an optimal fit.  
With an ergonomic insert for the correct distribution of pressure over the shinbone, which prevents knee and back problems.  
The wide elastic straps ensure that there is no pressure in the hollow of the knee.

## REPLACEMENT STRAPS FOR FENTO KNEE PADS

15.11732

## REPLACEMENT CUSHION FOR FENTO KNEE PADS

15.11733



## KNEE PADS "ERGO"

15.11720

EN 14404 certified

## REPLACEMENT STRAPS FOR KNEE PADS "ERGO"

15.11721



## KNEE PADS "WOHLPRO"

15.11678

Medical knee pad, recommended from professional organisation.

## REPLACEMENT STRAPS FOR KNEE PADS "WOHLPRO"

15.11679



## POCKETABLE KNEE PADS

15.11715

For dungarees. Premium quality of cellular rubber. Very durable and elastic.  
Due to the cuttings it is very comfortable to use.  
Per pad 75g, dimensions: 22,5 x 16 x 12mm  
Paired.



## DUST MASK WITH COMFORT NOSE SEAL FFP2

22.12966

Classic model with ActivForm®, DuraMesh®-structure and comfort nose seal.  
The ActivForm® seal automatically adjusts to different face types and their movements. Due to DuraMesh®-structure these masks are strong and durable, reducing consumption. With additional comfort nose seal for comfortable breathing (air keeps cooler). According to EN149:2001, FFP2 NR D: against toxic dusts, mists and fumes based on water and oil.  
Pack of 3 units



## DUST MASK WITH COMFORT NOSE SEAL FFP3

22.12967

Mask with ActivForm®, DuraMesh®-structure and comfort nose seal.  
The ActivForm® seal automatically adjusts to different face types and their movements. Due to DuraMesh®-structure these masks are strong and durable, reducing consumption. With additional comfort nose seal for comfortable breathing (air keeps cooler) and washable, contoured full face seal. According to: EN149:2001, FFP3 R D: against all dusts, mists and fumes based on water and oil.  
Packed per unit



## DUST MASK FFP2

22.12968

- Tested and CE certified according to EN 149: 2001 + A1: 2009
  - Special ultra-light design for maximum comfort
  - Flexible and ergonomic
  - Separately packaged
  - Filtration of droplets when inhaled
  - This product meets the requirements of the PPE regulation (EU) 2016/425
  - Suitable for internal and external protection
- Pack of 10 units

# FLOOR PROTECTION MATS

## ROLL POLYCARBONATE CHAIRMATS

ROLL chairmats are of Polycarbonate and protect all kinds of floor coverings.  
Features: odourless and totally emission-free, free of PVC or vinyl, 100 % recyclable, UV-stabilized, ideal for allergy sufferer, extremely strong, suitable for floor heating system, recommended for chair castors.



## ROLL POLYCARBONATE CHAIRMATS SMOOTH

With non-slip coating at the bottom. For parquet, PVC, lino and all smooth surfaces, also thin carpets.  
100% Polycarbonate without recycling. Thickness 2mm.

- 925x1200 mm
- 1000x1200 mm
- 1500x1200 mm
- 2000x1200 mm
- 3000x1200 mm
- Round Ø 1000 mm

- 12.11450
- 12.11451
- 12.11453
- 12.11455
- 12.11456
- 12.11457

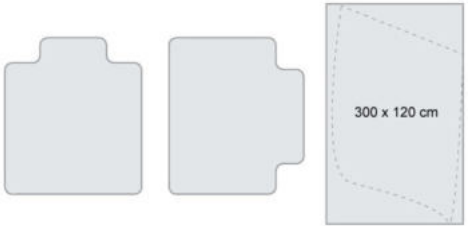


## ROLL POLYCARBONATE CHAIRMATS WITH SPIKES

For carpets. 100% Polycarbonate without recycling. Thickness 2,75mm.

- 930x1200 mm
- 1000x1200 mm
- 1500x1200 mm
- 2000x1200 mm
- 3000x1200 mm

- 12.11500
- 12.11505
- 12.11515
- 12.11525
- 12.11530



All sizes are available with cut-out, alongside or broadside.  
Within sizes 3000x1200mm every form is available according to drawing.

## CUT-OUT PER CHAIRMAT

Special measurements (on estimate) and shapes on request!

10.00004

## NOTES

[illegible]

# INDEX OF KEYWORDS

A			H			S		
Abrasives for parquet machines	30	62 63	Hammer	50		Sanding net	61	
Abrasives for single disc machines	25	60	Hand groover	40	41	Scissors	68	
Adhesive	72		Handheld grinding machines	16		Scraper	39	
Adhesive injection	71		Hardness tester	59		Seam roller	49	
Adhesive spatula	54		Height scriber	41		Seam squeezer	49	
Adhesive tape	71		Hobnailed shoes	52		Seaming tape	48	
Air cleaner	38		Hollow punch	45		Self-propelled stripper	5	- 8
Aluquick	54		Hook blades	65		Single disc machines	20	21
Anti slipping rip tapes	71		Hydromette	57		Smoothing disc for single disc machines	24	
Assembly adhesive	72					Spike shoes	52	
B			I			Spiked roller	52	
Blade for grooving machine	42		Industrial vacuum cleaner	34	- 36	Spray adhesive	72	
Blades	65		Installer knife	66		Spreading knife	53	
Blades for stripper machines	3	- 10	Interchangeable spatula	54		Stair sander	16	
Break-off blades	65					Stair tool	49	
Broom	46		J			Stairclimber	9	
Brushes for single disc machines	27		Joint connectors	72		Steel angle	59	
Bullystripper	10					Steel nails	72	
C			K			Steel ruler	59	
Cable drum	26		Knee kicker	48		Stone disc for single disc machine	24	
Caisson moisture meters	57	58	Knee pads	73		Strip cutter	40	
Carbide discs for single disc machines	23		Knife holder	66		Stripper machines	3	- 10
Cargomaster	9		Knives	66		Stripper tools	3	- 10
Carpet awl	49		KRL-measuring instrument	58		Stripping blade	51	
Carpet clamp	10					Superfinishing pads	61	
Carpet cutters	67		L					
Carpet installation tools	48		Laser distance meter	59		T		
Carpet stretcher	48		Leather knife holder	66		Tank for single disc machines	27	
Cartridge pistol	72		Leister tools	43	44	Tapping block	50	
CCM moisture meters	57		Leveling spatula	51		Template kit for stairs	59	
Charimats	74		Lino roller	46		Thermo-hygrometer	58	
Cleaning pads for single disc machines	25		Linocutter	42		Trapezium blades	65	
Cleaning tissues	51		Linoleum installation tools	40		Triac	43	
Cold welding liquid	47		Longopac dust separator	37		Trimming knives	45	
Construction vacuum cleaner	34	- 36	Longopac vacuum cleaner	34		Turbo Fiberpad	61	
Copper tape	53							
Cup wheels for grinding machines	17	18	M			U		
Current limiter	26		Measuring wedge	59		Unifloor 500	43	
Cutter knife	66		Mini sander	19		Universal knife	66	
Cutters	67		Minifloor	43				
D			Mitre cut shears	67		V		
Diamond discs for single disc machines	22		Mixer	69		Vacuum cleaner	34	- 36
Diamond polishing pads	64		Mixer holder	70		Vacuum system for single disc machines	20	
Discs for floor grinding machines	13	14	Mixing station	70				
Discs for hand grinding machines	17	18	Mixing tools	69		W		
Discs for single disc machines	22	- 25	Moisture meters	57	58	Welding machine	43	
Distance meter	59		Mouldign lifter	49		Welding tools	24	
Dolphin knife	66		Mozart blades	65		Wood sanding disc for single disc machine	29	
Driving aid for stripper	6		Multidisc sanding machines	29	- 32	machine	61	
Dust masks	73					Woody		
Dust separator	37		N			Wool pads		37
E			Nails	72				
Easy 5000	42		Notched insersts	55		Z		
Edge sander	16		Notched spatula	54		Zyclone dust separator		
Eraser	45		Nozzles for welding tools	44				
Esge sander for parquet	29							
Esge trimmer	40		P					
Extension cable	26		Pad holder for single disc machines	25	60			
F			Pads for single disc machines	25	60			
Filter fur vacuum cleaner	34	- 36	Parquet installation tools	50				
Finishing trowel	52		Parquet sanding machines	29	- 32			
Flex spatula	52		Parquet saw	9				
Floor grinding machines	12		Pile brush	49				
Floor protection mats	74		Pin leveller	53				
Floorign cutter	51		Pre-cutter	6				
Flooring scraper	39		Pressure cork	46				
Floro scriber	41		Pressure hammer	46				
G			Pressure roller	46				
Gann moisture meters	57	58	Protection switch	26				
Grinding block	39		R					
Grinding stone	39		Ramps	6				
Grip tapes	71		Ride-on stripper	3				
Grooving machine	42		Roller	56				
			ROLL-STRIPPER	3	- 8			
			Rubber hammer	50				
			Rubber spatula	51				





Visit us on social media



Albstrasse 12  
D-72820 Sonnenbühl  
Germany

Phone +49 (0) 7128/9280-0  
Email [info@roll-gmbh.de](mailto:info@roll-gmbh.de)

[www.roll-gmbh.de](http://www.roll-gmbh.de)