



*Wir bringen Bewegung ins Werkzeug*



# FLOORING TECHNOLOGY

## MACHINES AND TOOLS

# ROLL GmbH | Company profile

**Roll GmbH** is German leading manufacturer of machines for the removal of floor coverings, machines for surface preparation and machines and tools for the installation of all kind of floor coverings. Furthermore a large assortment of different flooring profiles is offered for a wide range of applications.

Roll GmbH also is the Roll family and their dedicated team which works with passion for the flooring technology for more than 35 years. Since the company was founded by Dieter and Rosemarie Roll, mile stones were set in the flooring industry e.g. the Bullystripper. The second generation family business has set new standards for the industry in recent years.

The expansion of the research and development department enabled innovation activities aimed at technological leadership, so that in 2013 a revolutionary self-propelled stripper machine with an alternative drive concept and intelligent controls could be launched on the market. As of today, 5 machines form a ROLL stripper family.

At the same time, the range of ROLL floor grinding machines was built up, which improve the possibilities of subfloor preparation for the floor layer. All machines are manufactured on the in-house assembly line.

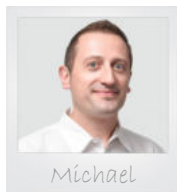
The range of tools and machines is rounded off by a system of aluminum floor profiles. Thus, Roll GmbH offers an overall concept for every floor layer.

„We not only want to satisfy our customers, we want to fascinate them“ this is what the siblings Beatrice, Stephan and André Roll clearly want to express. This works best with products which convince and furthermore with a remarkable service, these two features make the Roll GmbH successfully all over the world.



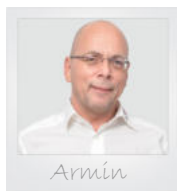
**André Roll**  
Managing Director

Mobile: +49(0)162/9166605  
Phone: +49(0)7128/92 80-24  
Email: andre.roll@roll-gmbh.de



**Michael Dorow**  
Sales Manager Germany  
Sales territory 1: South-West

Mobile: +49(0)162/9166607  
Phone: +49(0)7128/92 80-16  
Email: michael.dorow@roll-gmbh.de



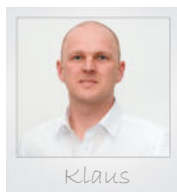
**Armin-Georg Jaschik**  
Sales territory 4: East / North-East

Mobile: +49(0)151/15337427  
Phone: +49(0)7128/92 80-0  
Email: armin.jaschik@roll-gmbh.de



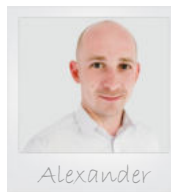
**Maik Oliver Kolcan**  
Sales territory 5: West

Mobil: +49(0)162/1555113  
Phone: +49(0)7128/92 80-0  
Email: maik.kolcan@roll-gmbh.de



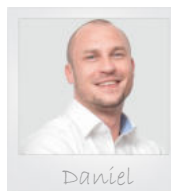
**Klaus-Peter Frömbgen**  
Sales territory 7: North / North-East

Mobile: +49(0)171/4747195  
Phone: +49(0)7128/92 80-0  
Email: klaus.froembgen@roll-gmbh.de



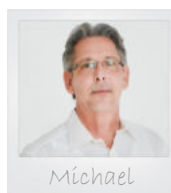
**Alexander Berndt**  
Sales territory 3: Center

Mobile: +49(0)171/4747199  
Phone: +49(0)7128/92 80-0  
Email: alexander.berndt@roll-gmbh.de



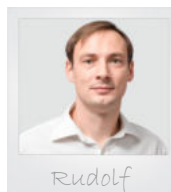
**Daniel Heinrich**  
Sales territory 2: South / South-East

Mobile: +49(0)162/5211199  
Phone: +49(0)7128/92 80-0  
Email: daniel.heinrich@roll-gmbh.de



**Michael Wirges**  
Sales territory 6: North-West

Mobile: +49(0)151/22622667  
Phone: +49(0)7128/92 80-0  
Email: michael.wirges@roll-gmbh.de



**Rudolf Glessmann**  
Area Sales Manager Eastern Europe

Mobile: +49(0)162/2111192  
Phone: +49(0)7128/92 80-12  
Email: rudolf.glessmann@roll-gmbh.de

<b>ROLL STRIPPER machines for removing floor coverings</b> ROLL STRIPPER RO-1, RO-2, RO-3, RO-5, parquet saw RO-4, Bullystripper, E-Cut, ramps	<b>02 - 10</b>
<b>ROLL Floor grinding machines</b> Floor grinding machines RO-400, RO-300, RO-250, accessories	<b>11 - 15</b>
<b>ROLL Hand grinding machines</b> Hand grinding machines RO-125, RO-180, accessories	<b>16 - 20</b>
<b>ROLL Single disc machines</b> Single disc machines, vacuum system, special discs, abrasives, liquid tank, cable, current limiter	<b>21 - 29</b>
<b>ROLL Parquet sanding machines</b> Parquet sanding machine Woody, Edge sander, accessories	<b>30 - 33</b>
<b>Vacuum cleaners</b> Industrial vacuum cleaners, dust separators, filters, dust bags	<b>34 - 38</b>
<b>Scrapers and grinding stones</b> Scrapers, grinding stones	<b>39</b>
<b>Installation tools</b> Linoleum and PVC installation tools, Leister hot air tools, pressure rollers, cold welding liquid, carpet installation tools, parquet installation tools, spatulas, spreading knives, rollers	<b>40 - 56</b>
<b>Measuring instruments</b> CCM moisture measuring instrument, handheld measuring instruments	<b>57 - 59</b>
<b>Abrasives</b> Abrasives for single disc machines, parquet sanding machines, edge sanders	<b>60 - 64</b>
<b>Cutting tools</b> Blades, knives, scissors, cutters	<b>65 - 68</b>
<b>Mixing tools</b> Mixers and mixing rods, mixing station	<b>69 - 70</b>
<b>Assembly accessories</b> Anti slipping grip tapes, spray adhesive, assembly adhesive, cartridge pistol, 2-components adhesive, steel nails	<b>71 - 72</b>
<b>General work equipment</b> Knee pads, dust masks	<b>73</b>
<b>Chairmats</b> Polycarbonate chairmats with and without spikes	<b>74</b>

# ROLL-STRIPPER



- **Made in Germany**  
Development and production in Sonnenbühl
- **Use in noise-sensitive areas**  
Low vibration and noise level
- **Effortlessly working**  
Stepless joystick control back and forth
- **Maximum performance**  
Thanks to the striking mechanism with 2000 beats/minute
- **Very manoeuvrable and compact**  
With two drive motors right/left and castors

## High seating position

For a good view of the tool

## Control cabinet

Frequency converter for the optimal operation of the electric motors

## Speed

Infinitely adjustable up to 37 meters/minute via joystick control and two electric engines

## Additional weights

Modular construction with removable additional weights

## Comfortable joystick control

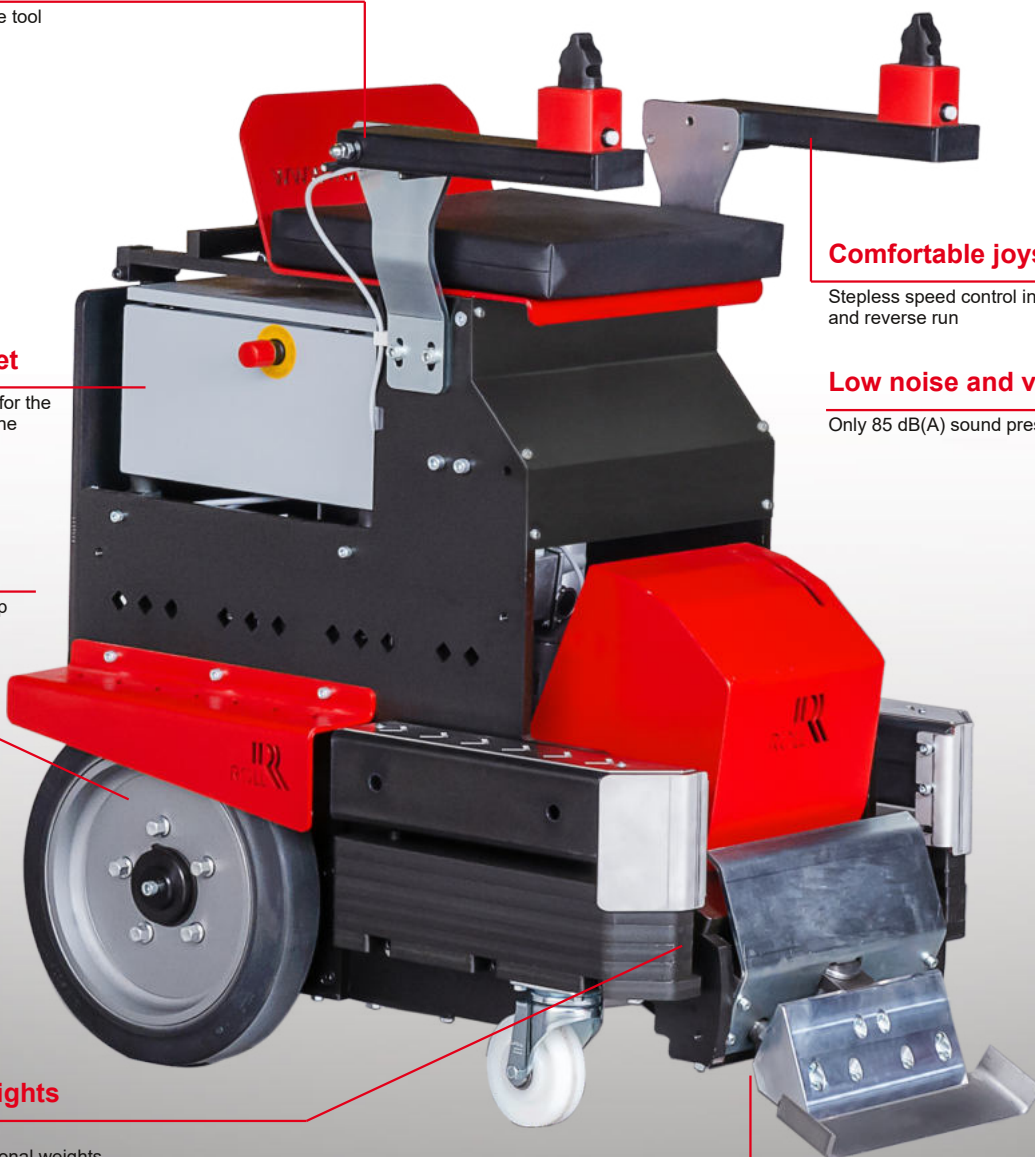
Stepless speed control in forward and reverse run

## Low noise and vibration

Only 85 dB(A) sound pressure level

## Striking mechanism

Striking mechanism with 2000 beats per minute and electric lift motor







## ROLL-STRIPPER RO-1.1

17.11000

Compact ride-on stripper for professional removal of all extremely bonded floor coverings on medium and large areas such as parquet, tiles, carpeting, linoleum, PVC and vinyl.

### Special features:

- For medium and large areas
- Stepless speed control up to 37m / min
- Maximum efficiency by the striking mechanism
- Stepless working angle for optimal use on different floor coverings and surfaces
- High contact pressure of the stripper tool by additional lifting motor
- High torque (double torque of the proven RO-2 stripper)
- Very smooth running thanks to large drive wheels (400mm)
- Effortless work by comfortable joystick control
- Quiet operation by industrial electric motors (85 dB (A))
- Very manoeuvrable and compact

### Areas of application:

- Removal of parquet
- Removal of ceramic tiles
- Removal of elastic floor coverings
- Removal of textile floor coverings
- Removal of PVC floor coverings
- Removal of sports floor coverings

### Technical specifications:

Drive engines left/right: each 1,5 kW, 230 volts  
 Torque: 654 Nm  
 Adjustable speed: up to 37 m / min  
 Stroke engine: 1,1 kW, 230 volts  
 Blow count: 2000 beats per minute (bpm)  
 Lifting motor: 8600 N nominal force  
 Adjustable working angle: up to 40°  
 Working width: 120 / 250 / 300 / 350 mm  
 Dimensions: 1050 x 600 x 1100 mm  
 Weight: 528 kg, modular construction

### Included in delivery:

- Stripper tool 350mm flat
- Stripper tool 350mm U-shape
- 10m industrial extension cable
- Tool set
- Personal protective equipment



## Stripper tool 250x80x2mm flat (type 12)

17.18400

## Stripper tool 300x60x2mm flat

17.18560

Steeper angle

## Stripper tool 300x70x2mm flat

17.18570

Steeper angle

## Stripper tool 350x80x2mm flat (type 32)

17.18420

## Stripper tool 350x80x2mm U-shape A, (type 62)

17.18450

Bevel up

## Stripper tool 350x80x2mm U-shape B, (type 72)

17.18460

Bevel down

## Stripper tool 250x180x6mm for parquet

17.18585

Special tool, flat pressure angle

## Stripper tool 250x150x6mm for parquet

17.18588

Special tool, steep pressure angle

## Stripper tool 250x180x6mm for parquet

17.18589

Special tool, medium pressure angle

## Stripper tool 60mm

17.18592

For removal parquet and tiles

## Stripper tool 80mm

17.18594

For removal parquet and tiles

## Stripper tool 100mm

17.18596

For removal parquet and tiles

## Stripper tool 120mm

17.18598

For removal parquet and tiles

# ROLL-STRIPPER



- **Made in Germany**

Development and production in Sonnenbühl

- **Use in noise-sensitive areas**

Low vibration and noise level

- **Effortlessly working**

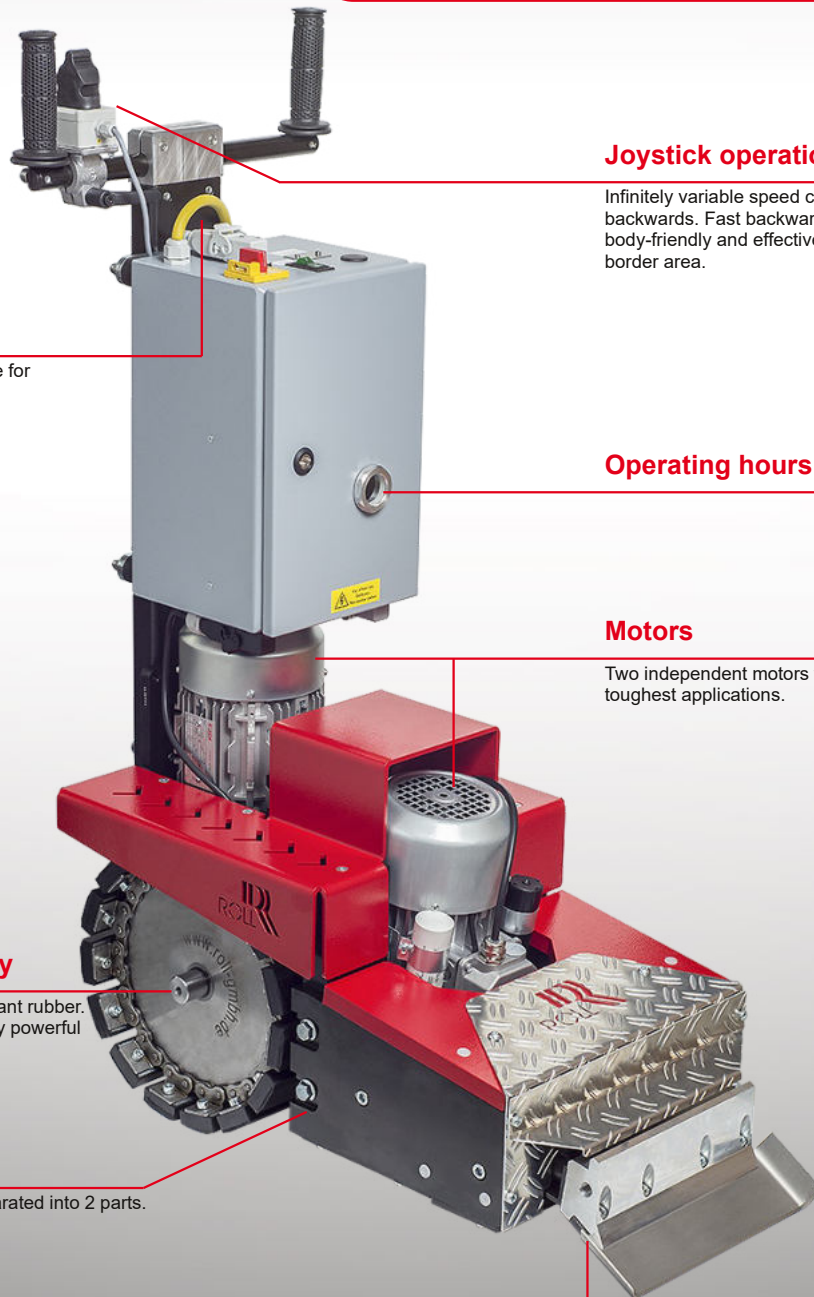
Stepless joystick control back and forth

- **No slipping of the wheels**

Through high-traction chain wheels with large contact area

- **Less tool wear**

Through hardened and resharpenable tools



**Individual operation**

The handle element is multiple adjustable for individual adjustment to the user.

**Joystick operation**

Infinitely variable speed control forwards and backwards. Fast backward speed saves time, is body-friendly and effective when working in the border area.

**Operating hours counter**

**Motors**

Two independent motors with power reserves even in toughest applications.

**Innovative drive technology**

Driven by chains made of abrasion resistant rubber. Through the polygon wheels a particularly powerful drive is guaranteed.

**Transport**

The ROLL-STRIPPER RO-2 can be separated into 2 parts. Additional air tires included.

**Striking mechanism**

An adjustable stroke of the stripper tool (3 levels) enables individual settings depending on the floor covering.



## ROLL-STRIPPER RO-2

17.18000

Compact stripper machine with chain drive for professional removal of glued floor coverings such as parquet, carpeting, linoleum, PVC and vinyl.

### Special features:

- powerful industrial motors
- innovative drive technology
- innovative tool technology
- joystick operation
- low vibration and noise level
- easy to transport

### Areas of application:

- Removal of parquet
- Removal of elastic floor coverings
- Removal of textile floor coverings
- Removal of PVC floor coverings

### Technical specifications:

Drive engine:	1,5 kW, 230 volts with worm gear
Torque:	327 Nm
Stroke engine:	1,1 kW, 230 volts
Blow count:	2500 beats per minute (bpm)
Working width:	up to 350 mm
Dimensions:	380 x 760 x 1100 mm
Weight:	195 kg

### Included in delivery:

- Stripper tool 250mm flat
- Stripper tool 250mm U-shape
- 10m industrial extension cable
- Tool kit
- Carrying handles
- Personal protective equipment
- Transport wheels with pneumatic tires

### Standard tools:

#### Stripper tool 250x80x2mm flat (type 12)

17.18400

#### Stripper tool 350x80x2mm flat (type 32)

17.18420

#### Stripper tool 250x80x2mm U-shape A, (type 42)

17.18430

Bevel up

#### Stripper tool 250x80x2mm U-shape B, (type 52)

17.18440

Bevel down

#### Stripper tool 350x80x2mm U-shape A, (type 62)

17.18450

Bevel up

#### Stripper tool 350x80x2mm U-shape B, (type 72)

17.18460

Bevel down

### Special tools:

#### Stripper tool 250x60x1mm U-shape A 90° bend

17.18510

For textile floor coverings

#### Stripper tool 250x60x2mm U-shape A

17.18520

Steeper pressure angle

#### Stripper tool 300x60x2mm flat

17.18560

Steeper angle

#### Stripper tool 300x70x2mm flat

17.18570

Steeper angle

#### Stripper tool 250x70x2mm

17.18475

Working width 100mm

#### Stripper tool 250x180x6mm for parquet

17.18585

Special tool, flat pressure angle

#### Stripper tool 250x150x6mm for parquet

17.18588

Special tool, steep pressure angle

#### Stripper tool 250x180x6mm for parquet

17.18589

Special tool, medium pressure angle



# ROLL-STRIPPER



## Additional weight for RO-2

43.00303

11,5 kg. Incl. damping pad and screw set.  
Per machine max. 4 pieces.



## Carrying aid for RO-2 (set of 2 pieces)

43.00444

For a simplified loading, unloading and transport over stairs.

## Carrying handle with rubber handle

43.00436

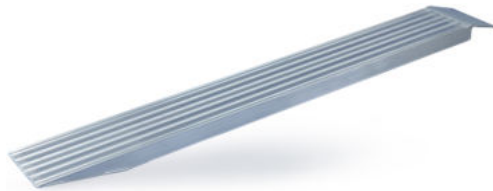
Price per piece



## Driving aid for RO-2 and RO-3

47.00580

With castors for easy transport to the job site



## Ramp 240x2000mm (set of 2 pieces)

17.17750

For loading of heavy equipment into vans. With non-slip profile.  
Capacity: 1000 kg / pair.



## Ramp 250x2500mm - foldable (set of 2 pieces)

17.17760

For loading of heavy equipment into vans. With non-slip profile.

Length: 2,5m (1,25m folded)  
Width: 250mm  
Capacity: 550 kg/pair



## Pre-cutter RO-Stripmaster

17.18900

Perfect tool for pre-cutting strips of resilient and textile floor coverings as preparatory work before removing the floor covering.

Adjustable working angle and adjustable handles allow ergonomic working while standing.

Works with a standard hook blade.  
Blade change without tools.





## ROLL-STRIPPER RO-3

17.19000

The ROLL-STRIPPER RO-3 is a compact stripper machine for professional removal of glued floor coverings such as carpeting, linoleum, PVC and vinyl.

The large transport wheels allow transport by 1 person.

This makes the new ROLL-STRIPPER RO-3 the ideal companion for all installation companies.

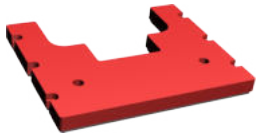
- fast and easy transport to the place of use with pneumatic transport wheels
- transportable by 1 person
- effortlessly working with the stepless joystick control
- use in noise-sensitive areas due to low vibration and noise level
- compact and manoeuvrable
- powerful through the use of industrial motors
- effective on different floor coverings with infinitely adjustable working angle

### Technical specifications:

Drive engine:	1,1 kW, 230 volts with worm gear
Torque:	200 Nm
Stroke engine:	1,1 kW, 230 volts
Blow count:	2500 beats per minute (bpm)
Stroke length:	adjustable in 3 levels
Working angle:	stepless adjustable from 18° to 32°
Working width:	up to 300 mm
Dimensions:	315 x 670 x 1100 mm
Weight:	123 kg

### Included in delivery:

- Stripper tool 200mm flat
- Stripper tool 200mm U-shape
- 10m industrial extension cable
- Tool kit
- Carrying handles
- Personal protective equipment
- Pneumatic transport wheels with pneumatic tires



## Additional weight for RO-3

47.00333

7,5 kg. Incl. damping pad and screw set.  
Per machine max. 3 pieces.



## Carrying aid for RO-3 (set of 2 pieces)

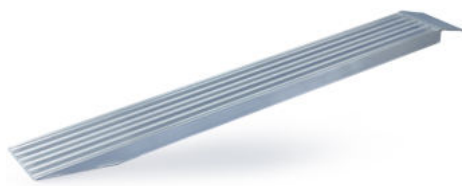
47.00555

For a simplified loading, unloading and transport over stairs.

## Carrying handle with rubber handle

43.00436

Price per piece



## Ramp 240x2000mm (set of 2 pieces)

17.17750

For loading of heavy equipment into vans. With non-slip profile.  
Capacity: 1000 kg / pair.



## Driving aid for RO-2 and RO-3

47.00580

With castors for easy transport to the job site



## Stripper tool 200x80x2mm flat

17.19620

## Stripper tool 150x80x2mm U-shape A

17.19615

Bevel up

## Stripper tool 150x80x2mm U-shape B

17.19616

Bevel down

## Stripper tool 200x80x2mm U-shape A

17.19640

Bevel up

## Stripper tool 200x80x2mm U-shape B

17.19645

Bevel down

# ROLL-STRIPPER



## ROLL-STRIPPER RO-5

17.25000

The ROLL-STRIPPER RO-5 is our smallest and lightest self-propelled stripper machine for the professional removal of bonded floor coverings such as carpet, linoleum, PVC and vinyl.

The large transport wheels and easy disassembly into two parts enable transport by 1 person.

### Special features:

- Quick and easy transport to the job site with transport wheels
- Can be transported by 1 person
- Effortless work with the stepless joystick control
- Use in sensitive areas thanks to low-noise and low-vibration operation
- Compact and manoeuvrable
- Powerful thanks to the use of industrial motors
- Effective on different surfaces with infinitely adjustable working angle

### Areas of application:

- Removal of elastic floor coverings
- Removal of textile floor coverings
- Removal of PVC floor coverings

### Technical specifications:

Drive engine:	0,75 kW, 230 volts with worm gear
Torque:	145 Nm
Stroke engine:	0,75 kW, 230 volts
Blow count:	2800 beats per minute (bpm)
Stroke length:	adjustable from 20° to 40°
Working width:	up to 300 mm
Dimensions:	305 x 640 x 1080mm
Weight:	95 kg

### Included in delivery:

- Stripper tool 200mm flat
- 10m industrial extension cable
- Tool set
- Personal protective equipment
- Transport wheels

*The image shows the machine with optional additional weights!!*



## Additional side weight for RO-5

17.25910

6 kg



## Stripper tool 200x80x2mm flat

17.19620

## Stripper tool 150x80x2mm U-shape A

17.19615

Bevel up

## Stripper tool 150x80x2mm U-shape B

17.19616

Bevel down

## Stripper tool 200x80x2mm U-shape A

17.19640

Bevel up

## Stripper tool 200x80x2mm U-shape B

17.19645

Bevel down



## Parquet saw RO-4

17.19700

Indispensable for the dismantling of parquet!

With the parquet saw RO-4, the parquet is pre-cut very quickly and in an upright position. You optimize the preparatory work for dismantling in order to remove parquet even faster and more effectively with the ROLL-STRIPPER RO-2.

- very ergonomic use in upright position
- extremely effective with the special saw blade
- simple and safe handling with the lowering mechanism
- adjustable cutting depth from 0 to 22mm
- dust-free working with the integrated dust extraction device

### Technical specifications:

Drive engine:	2200 W, 230 V
Rotation:	4000 rpm
Blade:	Ø 180 mm
Cutting depth:	0mm - 22 mm
Dimensions:	500 x 280 x 950 mm
Weight:	31 kg

Delivery including carbide saw blade.



## Replacement blade for parquet saw

43.40555

Carbide saw blade Ø 180mm

## Diamond blade for parquet saw

43.40575

Ø 180mm



## Stairclimber CargoMaster Type CC160

17.17900

For loads up to 160 kg, speed 12-25 steps per minute.

The stairclimber CC160 is the right choice when it comes to medium-heavy or bulky loads. Its low dead weight and its easy handling make the CargoMaster indispensable tool.

### Advantages:

- safe transport up to 160kg
- step edge braking system
- ComfortStep for gentle climbing
- single step switch
- multi-level battery indicator

### Technical specifications:

Capacity:	160 kg
Weight with battery:	27,3 kg
Weight without battery:	23,0 kg
Height   width   depth in mm:	1065-1490   446   300
Range with one battery charge:	15-30 floors
Climb rate:	9-26 steps per minute
(Climb rate and range may decrease as load increases)	

### Delivery:

Stair climber CargoMaster Typ CC160 , 1 battery, 1 charger, platform size 400x440x8mm, tension belt

## Quick-change battery

17.17910

For stairclimber CargoMaster Type CC160



# ROLL-STRIPPER



Einsatz ohne Stiel, mit vibrationsgedämpften Handgriff

## ROLL Bullystripper with T-handle

17.14575

Floor stripper to remove floor coverings.

2 in 1: a multi-purpose machine for larger areas as well as small fields which are difficult to reach like stairs and niches. With T-handle to work in a comfortable upright position, which can be removed to work with the Bullystripper like a hand tool.

With premium attachment-parts for a long service life. Delivery incl. carrier with wheels standard blade for universal use.

### Technical specifications:

Power: 2200 W, 230 V

Weight: 14,5 kg

Working width: 210 mm



## Blade for Bullystripper

17.14580

Standard blade 60x210mm for universal use

## Blade for Bullystripper

17.14582

Standard blade 60x210mm for universal use  
Pack of 10 units

## Blade for Bullystripper "plus"

17.14581

Special blade 60x210mm hardened, 1,5mm thick, with higher wear resistance



## Blade for Bullystripper 130x210mm

17.14590

For soft floors



## Jumbo blade for Bullystripper

17.14595

With anti-stick coating (Teflon) and waved cut, ideal carpets with felt back, PVC and lino. 210mm.



## U-blade for Bullystripper

17.14592

60mmx210mm with U-shape 45° bending.  
Self-cutting for soft floors.



## Blade for Handstripper

17.14511

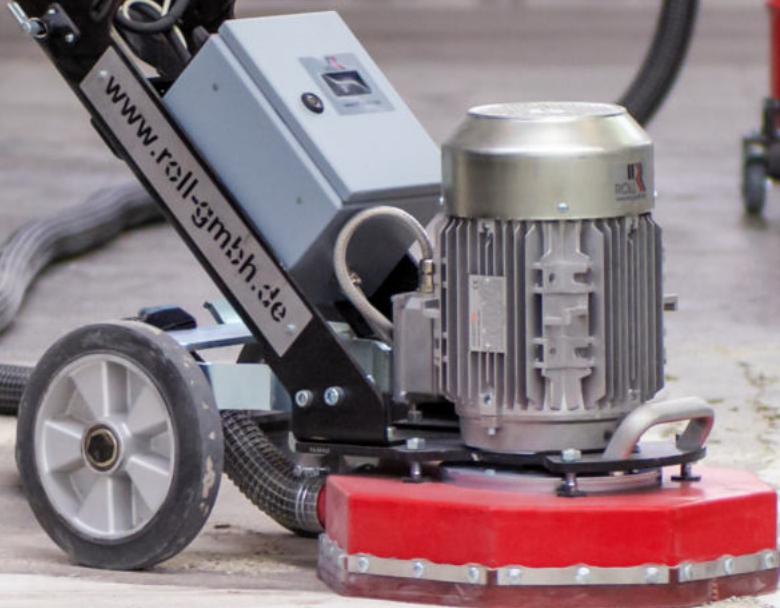
Standard blade 145mm, trapezium, for universal use

## Blade for Handstripper "plus"

17.14512

Special blade 108mm hardened, 1,5mm thick, with higher wear resistance





# ROLL Floor grinding machines



- **Made in Germany**  
Development and production in Sonnenbühl
- **Higher performance**  
By increased speed to 1650 rpm
- **Dust-free working**  
With the integrated dust extraction device
- **Use in sensitive areas**  
Low vibration and noise level
- **Easy transport**  
Foldable drawbar and compact dimensions



## Easy handling

Due to wide and multiple adjustable guide handle

## Foldable drawbar

For easy transport

## Operating hours counter

## Low power consumption

and soft start by frequency converter control

## High torque

Brushless motor with 1650 rpm

## Integrated vacuum system

Flexibly mounted

## Carrying

# ROLL Floor grinding machines



## Floor grinding machine RO-400

17.15840

The ROLL floor grinding machine RO-400 was developed for surface preparation in industrial and commercial properties. With the powerful three-phase motor, you can easily carry out any surface preparation works.

- high performance through a 400mm diameter
- powerful 4.0 kW three-phase motor
- direct-drive mechanism
- operating hours counter
- effortlessly working due to the smooth running of the machine and adjustable drawbar
- easy transport due to compact dimensions and a foldable drawbar
- dustfree working with the integrated dust extraction device

### Technical specifications:

Working power:	4,4 kW / 400 V
Rotation:	1450 rpm
Weight:	81 kg
Working width:	400 mm



## Floor grinding machine RO-300

17.16800

The floor grinding machine RO-300 developed by ROLL sets new standards in surface preparation on all surfaces.

Due to the high area performance, compact dimensions and low weight, the machine is an ideal companion on all construction sites. Innovative components sets new standards in this class:

- soft start and low power consumption, therefore no triggering of fuses on weakly secured construction sites
- effortlessly working due to the smooth running of the machine
- dust-free working with the integrated dust extraction device
- easy transport due to compact dimensions and a foldable drawbar
- individual billing with the integrated hour meter
- long service life and effectiveness of the tools Made in Germany

### Technical specifications:

Working power:	2200 W / 230 V
Rotation:	1650 rpm
Weight:	63 kg
Working width:	300 mm

## Floor grinding machine RO-300 with direct-drive

17.16900

As previously described but with a direct drive 400 volt motor.

### Technical specifications:

Working power:	3.0 kW / 400 V
Rotation:	1410 rpm
Weight:	62 kg
Working width:	300 mm



## Floor grinding machine RO-250

17.10250

Compact grinding machine for surface preparation on small to medium-sized surfaces.

### Special features:

- High efficiency at low power consumption
- Easy transport due to compact dimensions and the foldable drawbar
- Can be used very well in the edge area by adjusting the drawbar
- Low-dust work with the integrated dust extraction device
- Ideal for smaller businesses who value efficient operation

### Areas of application:

- Removing adhesives
- Removing levelling compounds
- Removing coatings
- Grinding concrete and other mineral surfaces
- Grinding of ceramic tiles

### Technical specifications:

Working power:	1800 W / 230 V
Rotation:	1450 rpm
Weight:	55 kg
Working width:	250 mm



# ROLL Floor grinding machines



Made in Germany

## Diamond disc "V12"

Diamond disc for grinding work on mineral substrates. For sanding screed and filler, sanding off loose filler and thin, non-smearing layers of adhesive.

Ø 400mm KG 30/40	17.15875
Ø 400mm KG 30/40 (soft bond)	17.15859
Ø 300mm grit 30/40 (red)	17.16875
Ø 300mm grit 30/40 (hard bond)	17.16832
Ø 300mm grit 30/40 (soft bond)	17.16859
Ø 300mm grit 60/80 (salmon red)	17.16876
Ø 300mm grit 100/120 (white)	17.16877
Ø 250mm grit 30/40	17.10275
Ø 250mm grit 30/40 (hard bond)	17.10243
Ø 250mm grit 30/40 (soft bond)	17.10254
Ø 160mm	17.16895



Made in EU

## Diamond disc "S9"

Diamond disc for grinding work on mineral substrates. For leveling substrates.

Ø 300mm grit 30/50	17.16878
Ø 250mm grit 30/50	17.10278



Made in Germany

## PCD-disc "CR9"

PCD grinding disc with PCD grit segments for grinding work on mineral substrates and for removing thin adhesive films and coatings.

Ø 400mm	17.15889
Ø 300mm	17.16889
Ø 250mm	17.10289
Ø 160mm	17.16897



Made in Germany

## PCD-disc "R12"

PCD grinding disc with PCD grit segments for grinding work on mineral substrates and for removing thin adhesive films and coatings.

Ø 400mm	17.15887
Ø 300mm	17.16891
Ø 250mm	17.10291
Ø 160mm	17.16893



Made in Germany

## PCD-disc "PCD trapezium"

PCD milling disc with trapezoidal PCD segments and diamond support segments for removing all types of adhesives and for milling off fillers, tile adhesives and coatings. Due to the trapezoidal, sharp edges of the PCD segments, effective for milling off plastic-modified fillers.

Ø 400mm	17.15894
Ø 300mm	17.16868
Ø 250mm	17.10268



Made in Germany

## PCD-disc "PCD PRO + trapezium"

PCD milling disc with half-round PCD segments, trapezoidal PCD segments and support segments for removing all types of adhesives and for milling off fillers, tile adhesives and coatings.

Combination of PCD disc trapezoid and PCD disc PRO.

High effectiveness combined with aggressiveness and durability.

Ø 400mm	17.15895
Ø 300mm	17.16865



Made in Germany

## PCD-disc "PRO"

PCD milling disc with PCD segments and support segments for removing all types of adhesives and for milling off fillers, tile adhesives and coatings.

Particularly aggressive and durable due to the size and arrangement of the PCD segments.

Ø 400mm	17.15880
Ø 300mm	17.16880
Ø 250mm	17.10292
Ø 160mm	17.16896



# ROLL Floor grinding machines



Made in  
Germany

## Polishing disc with velcro 75mm

Aluminum disc with 6 velcro fasteners for diamond polishing pads 75mm.  
For dry polishing of concrete, screed, terrazzo, natural stone, porcelain stoneware, granite and marble.

Ø 400mm

17.16950

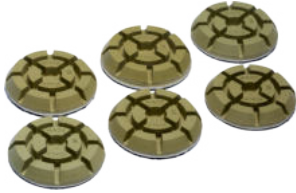
Ø 300mm

17.16950

## Replacement velcro self-adhesive

17.16951

For polishing disc



## Diamond polishing pads Ø 75mm with velcro

Resin diamond polishing pads for universal use for dry polishing and perfect fine sanding. Long service life due to high diamond content.

Grit 60

17.16960

Grit 120

17.16962

Grit 220

17.16964

Grit 400

17.16966

Grit 800

17.16968

Grit 1500

17.16970



Made in  
Germany

## Diamond disc for woodworking

Diamond grinding disc with 6 diamond segments for grinding work on wooden floors.  
For removing very hard and smearing coating on wooden floors.

Ø 300mm grit 40

17.16872

Ø 300mm grit 60

17.16873

Ø 250mm grit 40

17.10295



## Hose and cable holder

27.20526

The hose and cable holder is a useful accessory for our floor grinding machines RO-300 and RO-400 to fix the suction hose and connection cable to the drawbar of the machine.

# ROLL Hand grinding machines

## Dust free work

The sanding dust is sucked with the integrated vacuum attachment and the connection of an external industrial vacuum cleaner

## Speed control

To set the optimal speed to several tools



## Powerful motor

With dust protected electrical parts and thermic overload protection for a long service life, packed in a compact body

## Intelligent vacuum system

Adjustable in the height and rotary cover for different height of discs and for more comfortable work along the wall

## Reinforced gear

Reliable and robust with double bearing of the output shaft and optimized transmission components

## Sanding frame with castors

Height adjustable castors for comfortable work and for adjustment of the working angle (Included with ROMO, wood sanding kit, sanding frame)

## Hinged housing with magnet

Closed: for dust free work  
Opened: for sanding up to the edge

- **Made in Germany**

Development and production in Sonnenbühl

- **Handy and extremely powerful**

Strong motor with speed control and overload protection

- **Dust-free working right up to the edge area**

With the integrated dust extraction with hinged hood segment

- **Wide range of applications**

Wide range of accessories for renovation of subfloors and sanding wooden floors





## Hand grinding machine RO-125

19.14781

Application: universally applicable, ideal for the edge area and on stairs. For all subfloor works with the extensive range of accessories. Including vacuum attachment for the connection of an external industrial vacuum cleaner.

### Technical specifications:

Working power: 1530 W  
 Rotation: 3400 - 8000 rpm stepless  
 Weight: 4,5 kg  
 Working width: 125 mm

Delivery in metal carrying case.  
 Delivery **without** diamond disc. Accessories see page 18.



## Edge- and stair sander ROMO-125

24.70300

For sanding wooden floors, parquet and cork, along the wall and on stairs. Due to the adjustable cover you can work close to the wall. Including vacuum attachment for the connection of an external industrial vacuum cleaner.

### Technical specifications:

Working power: 1530 W  
 Rotation: 3400 - 8000 rpm stepless  
 Weight: 4,7 kg  
 Working width: 125 mm

Delivery with velcro sanding disc Ø 125mm for velcro sanding discs and a sanding frame with 2 height adjustable castors.  
 Delivery in metal carrying case.



## Hand grinding machine RO-180

19.14870

Extremely powerful renovation grinder for leveling out unevenness on concrete and screed surfaces. For removing floor covering residues, adhesive residues, tile adhesives, leveling compounds and floor coatings. With an integrated dust extraction device and a hinged hood segment for low-dust sanding work right up to the wall.

### Technical specifications:

Working power: 2600 W  
 Rotation: 6500 rpm  
 Weight: 9,3 kg  
 Working width: 180 mm

Delivery in metal carrying case.  
 Delivery **without** diamond disc. Accessories see page 19.



## Edge sander ROMO-180

24.70200

Application: for sanding wooden floors, parquet and cork. Including vacuum attachment for the connection of an external industrial vacuum cleaner.

### Technical specifications:

Working power: 2200 W  
 Rotation: 1500 - 5600 rpm stepless  
 Weight: 11,5 kg  
 Working width: 180 mm

Delivery with velcro sanding disc Ø 180mm with soft underlay for velcro sanding discs and a sanding frame with 2 height adjustable castors.  
 Delivery in metal carrying case.



## Wood sanding kit for RO-125

24.70400

Application as edge sander. Including: Velcro sanding disc Ø 125mm for velcro sanding discs and sanding disc for sanding discs with hole and a sanding frame with 2 height adjustable castors.

## Sanding frame for RO-125

24.70410

See article 24.70400, however without sanding disc.



## Sanding frame for RO-180

24.70265

Chassis for the hand grinding machine RO-180 for better handling and long-term relaxed work. The correct working angle is set with 2 height-adjustable castors.

# Accessories for ROLL Hand grinding machines



## Diamond disc Ø 125mm "forged"

19.14333

With 6 special forged segments inductively welded.

Applications: Concrete, abrasive concrete, screed and spackle.



## Diamond disc Ø 125mm "Z-segmentforged"

19.14336

With 8 forged diamond segments in a Z arrangement for grinding work on mineral surfaces. For leveling surfaces.



## Diamond disc Ø 125mm "V6"

17.16488

With 6 V-shaped segments.

For removing concrete, screed, levelling compound, sealings.



## Hybrid disc Ø 125mm

17.16469

With 6 poly-crystalline diamond cutters (PCD) and 6 diamond segments.

Universal disc to remove coatings, paintings, all kinds of adhesives and sealings as well as for milling of leveling compounds and tile adhesives.



## PCD-disc Ø 125mm "PRO"

17.16485

With each 3 poly-crystalline diamond cutters (PCD) and PCD supporting elements. To remove thick coatings and paintings, rough remainders of adhesives and sealings (e.g. epoxy resin, polyurethane, and acrylate). The PCD supporting elements prevent a deep engagement of PCD cutters.

Extremely long service live due to very high PCD proportion!



## Diamond disc Ø 125mm for wood

17.16486

With 3 diamond segments for woodworking. To remove very hard and lubricating coatings on wooden floors.



## Velcro sanding disc Ø 125mm with soft underlay

27.00394

For hand grinding machine RO-125 | ROMO-125 and angle grinders. Combi disc including nut M14. Used with velcro sanding discs and sanding discs with center hole 125mm.

## Velcro sanding disc Ø 125mm

27.00393

For hand grinding machine RO-125 | ROMO-125 and angle grinders. Used with velcro sanding discs 125mm.

## Sanding disc Ø 125mm

27.00394/1

For hand grinding machine RO-125 | ROMO-125 and angle grinders. Used with sanding discs 125mm. Including nut M14

Sanding discs see page 63



# Accessories for ROLL Hand grinding machines



## Diamond disc Ø 180mm "forged"

19.14814

With 9 special forged segments inductively welded.

Applications: Concrete, abrasive concrete, screed and spackle.



## Diamond disc Ø 180mm "Z-segment forged"

19.14835

With 12 forged diamond segments in a Z arrangement for grinding work on mineral surfaces. For leveling surfaces.



## Diamantscheibe Ø 180mm "V9"

19.14811

With 9 V-shaped segments.

For removing concrete, screed, levelling compound, sealings.



## Hybrid disc Ø 180mm

19.14815

With 6 poly-crystalline diamond cutters (PCD) and 6 diamond segments.

Universal disc to remove coatings, paintings, all kinds of adhesives and sealings as well as for milling of leveling compounds and tile adhesives.



## PCD-disc Ø 180mm "PRO"

19.14803

With 6 poly-crystalline diamond cutters (PCD) and 3 PCD supporting elements. To remove thick coatings and paintings, rough remainders of adhesives and sealings (e.g. epoxy resin, polyurethane, and acrylate). The PCD supporting elements prevent a deep engagement of PCD cutters.

Extremely long service live due to very high PCD proportion!



## Diamond disc Ø 180mm for wood

19.14816

With 6 diamond segments for woodworking. To remove very hard and lubricating coatings on wooden floors.



## Velcro sanding disc Ø 180mm with soft underlay

27.00945

For hand grinding machine RO-180 | ROMO-180 and angle grinders. Used with Velcro sanding discs 180mm.

Sanding discs see page 62

# ROLL Hand grinding machines



## Mini sander

19.14970

Handy mini sander for sanding work on wooden and parquet floors in the edge area and corners, hard-to-reach places and on stairs.

Use as a tile cutter with the diamond cutting disc.

In the set incl. sanding pad 50mm and abrasives.

- 1000 watts of power
- variable speed up to 18000 rpm via belt drive guarantees high performance
- rubber pad 50mm
- dust extraction adapter
- transport bag



## Flexible rubber pad 50mm

19.14972

with fastening screw



## Abrasive disc 50x8mm with 8mm center hole

High quality for the professionals.  
Pack of 25 pieces.

Grit 40  
Grit 60  
Grit 80

19.14990  
19.14992  
19.14994



## Carbide cutter disc 50mm

19.14974

For parquet repairs.

- Professional disc with 2 carbide teeth
- 10 mm cutting depth
- 4 mm cutting width



## Diamond cutting disc 50mm

19.14975

For cutting tiles and screed.



## E-Cut 65mm

19.14937

## E-Cut 35mm

19.14945

For Multimaster, with saw teeth for wood, gypsum carton, soft plastics.  
Cutting depth 50mm.



## E-Cut 65mm

19.14952

## E-Cut 35mm

19.14953

For Multimaster, with bimetal serration for plastic, wood, plywood and nails.  
Cutting depth 50mm. 3 times longer service life, high cutting speed.



## Metal brush 3-angle for Multimaster

19.14960

## Nylon brush 3-angle for Multimaster

19.14965

Grit 40

# ROLL Single disc machines

## Made by ROLL

Single disc technology is a sophisticated concept of the brand ROLL

## Universal use

About 25 special discs and accessories

## High quality

Professional machines with quality components

## Dust free work

With intelligent vacuum technology from ROLL

### Strengthened handle

Professional drawbar with wide handles in a closed design

### Cable

10m light connection cable leaves no traces of abrasion

### Capacitors box

easily accessible capacitors box

### Wheels

Big transport wheels for easy transport

### Robust handle bar

Solid aluminium square tube

### Plug connection

Industrial version

### Transport

Easy removal of the drawbar

### Drawbar joint

Drawbar joint as high-strengthened construction (only with RO-3000)

### Motor cover

Motor cover made of steel

### Vacuum system

Preparation for the ROLL vacuum system for dust free work

### Machine housing

Reinforced aluminium machine housing

### Rubber ring

To avoid damage when working along the wall



# ROLL Single disc machines



## Single disc machine RO-2200

19.16165

Application: universal machine, when you need a machine with high area efficiency and for permanent use, for all sub-floor works with all ROLL special discs.

### Technical specifications:

Working power: 2200W  
Rotation: 195 rpm  
Weight: 48,0kg  
Working width: 400mm

Pre-installed for ROLL vacuum system



## Single disc machine RO-2200 2.0

19.16205

Successor model with new drive technology.

Robust and powerful single disc sanding machine for all subfloor preparation works from sanding to the effective removal of adhesive and floor covering remainders, filler, leveling unevenness in the subfloor as well as for cleaning and maintaining floors.

### Technical specifications:

Working power: 2200W  
Rotation: 150 rpm  
Weight: 41,0kg  
Working width: 400mm

Pre-installed for ROLL vacuum system



## Single disc machine RO-1800 2.0

19.16200

Successor model with new drive technology.

Universal single disc machine for all subfloor works, as well as for cleaning and maintenance.

### Technical specifications:

Working power: 1800W  
Rotation: 150 rpm  
Weight: 37,0kg  
Working width: 400mm

Pre-installed for ROLL vacuum system



# ROLL Single disc machines



## Single disc machine RO-1800

19.16100

Application: universal machine for all sub-floor works with all ROLL special discs, as well as for cleaning and maintenance.

### Technical specifications:

Working power: 1800W  
Rotation: 150 rpm  
Weight: 40,0kg  
Working width: 400mm

Pre-installed for ROLL vacuum system



## Single disc machine RO-2000

19.14180

The RO-2000 is a powerful single-disc machine for all subfloor preparation work and for cleaning and maintaining floor coverings.

### Technical specifications:

Working power: 2000W  
Rotation: 190 rpm  
Weight: 40,0kg  
Working width: 400mm

Pre-installed for ROLL vacuum system



## ROLL vacuum system

19.14210

Universal vacuum system, suitable for all Roll-machines for absolutely dust-free work! Keeps the air 100% dust free.

The vacuum system is mounted to the preinstalled machine; the suction hose with adapter is connected to the industrial vacuum cleaner e.g. 19.15131.

All machines (RO-3000, RO-2200, RO-1800) are already pre-installed to connect this system. Also suitable for previous models of single disc machines – upon request.

Recommendation! We recommend keeping the Vacuum System always mounted!



## ROLL vacuum system

19.14206

Version with Velcro.

Universal vacuum system, suitable for all Roll machines.

The vacuum system is mounted on the already pre-equipped machine; The suction hose incl. adapter is connected to a vacuum cleaner.

Scope of delivery: loop tape, Velcro tape, 2 connecting pieces, suction hose.

# Special discs for ROLL Single disc machines



## ROLL Diamond disc "forged"

19.14330

Grinding disc for single disc machine with 5 freely rotating diamond discs 125mm with forged segments. For sanding cement-based substrates, filler, anhydrite, coatings and leveling out small unevenness, e.g. trowel marks.

Very aggressive grinding effect with a very long service life thanks to forged and precision-welded diamond segments.



## Diamond disc Ø 125mm "forged"

19.14333

With 6 special forged segments inductively welded.



## ROLL Diamond disc "Z-segment forged"

19.14338

Grinding disc for single disc machine with 5 freely rotating diamond discs 125mm with forged Z-segments. For sanding cement-based substrates, leveling compound, anhydrite, coatings and leveling small unevenness, e.g. trowel marks.

Very aggressive grinding effect with a very long service life thanks to forged and precision-welded Z-diamond segments



## Diamond disc Ø 125mm "Z-segment forged"

19.14336

With 8 special forged Z-segments inductively welded.



## ROLL Diamond disc

19.14320

Grinding disc for single disc machine with 5 freely rotating diamond discs 125mm with double row diamond segments. For sanding cementary surfaces, leveling compound, anhydrite, coatings and smaller bumps, e.g. trowel marks. Very aggressive grinding effect with a long service life.



## Diamond disc Ø 125mm "two-rowed"

19.14321

two-rowed, with high diamond content.

# Special discs for ROLL Single disc machines



## Tungsten carbide ring disc grit 14

19.17180

For universal use! For rough grinding of cement bonded surfaces, sintered surfaces. For grinding of paint and coatings. For grinding slightly uneven surfaces. For removing adhesive films.

Steel disc Ø 400mm, 14kg.



## Tungsten carbide ring disc grit 10

19.17182

For rough grinding of cement bonded surfaces, sintered surfaces. For removing remainders of adhesive and coatings. For grinding slightly uneven surfaces. For roughening concrete surfaces. For removing adhesive films.

Steel disc Ø 400mm, 14kg.



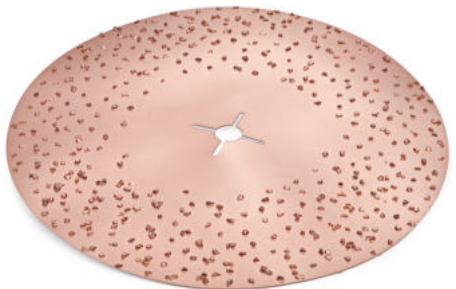
## Tungsten carbide ring Ø 400mm grit 14

19.17185

## Tungsten carbide ring Ø 400mm grit 10

19.17188

Screws and nuts included.



## Tungsten carbide disc Ø 400mm

For grinding spackle, screed and adhesive films. More efficient than abrasives. Double sided metal disc Ø 400mm. Used with drive disc 19.14211/12.

Grit 10  
Grit 14  
Grit 24  
Grit 36

19.17125  
19.17130  
19.17135  
19.17140

# Special discs for ROLL Single disc machines



## 4-headed wood sanding disc Ø 400mm

19.14500

For sanding wooden floors, parquet and cork, for finish sanding and for renovating. For sanding before varnishing and sealing. 4 discs Ø 150mm run on high quality bearings, screwed on a steel disc, discs are with soft underlay for Velcro sanding paper, they turn due to rotation of the machine. Efficient disc with high sanding removal.

Steel disc Ø 400mm, 21kg.

**We recommend** working with ROLL vacuum attachment for dust-free working area!



## Stone grinding wheel disc Ø 400mm

19.14308

For grinding concrete, screed and spackle. Aggressive grinding with very smooth grinding results.

Ø 400mm, 8,5kg.

## Stone grinding wheel Ø 400mm

19.14309



## Smoothing disc Ø 600mm

19.14183

For smoothing wet concrete. Steel disc Ø 600mm with edges bent up slightly, 10kg.



# Abrasives for ROLL Single disc machines



## ROLL Drive disc of aluminium Ø 380mm

19.14211

For abrasive discs. With exchangeable rubber covering.  
Wrench and fixation screw included. 4,25 kg.

## ROLL Drive disc of aluminium Ø 400mm

19.14212

For abrasive discs. With exchangeable rubber covering.  
Wrench and fixation screw included. 4,5 kg

## Rubber covering

52.00391

## Wrench 12mm

52.00394

## Holder "Smart"

54.00155

## Fixation screw M 25

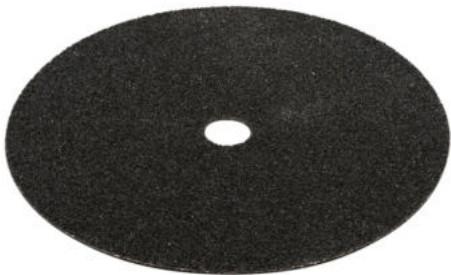
52.00393



## Abrasives Ø 380mm

For single disc machines, double sided, used with drive disc 19.14211.  
Premium quality for professionals. Silicium carbide on cloth/paper.  
Pack of 10 units.

Grit 16	19.14220
Grit 24	19.14230
Grit 36	19.14235
Grit 40	19.14240
Grit 60	19.14250
Grit 80	19.14260
Grit 100	19.14270
Grit 120	19.14267



## Abrasives Ø 400mm

For single disc machines, double sided, used with drive disc 19.14211/12.  
Premium quality for professionals. Silicium carbide on cloth/paper.  
Pack of 10 units.

Grit 16	19.14271
Grit 24	19.14272
Grit 36	19.14263
Grit 40	19.14273
Grit 60	19.14274
Grit 80	19.14275



## Pad holder Ø 380mm

19.15340

For Superpads and Normalpads, with exchangeable spiked plate.

## Spiked plate

52.00389

400mm for pad holder 19.15340



## Superpads 20mm Ø 406mm

From black to white decreasing hardness density.  
Pack of 5 units. Used with pad holder 19.15340.

<b>Black</b>	for rough cleaning	19.15350
<b>Green</b>	for cleaning (thorough cleaning)	19.15360
<b>Red</b>	for softer cleaning of sensitive floors	19.15370
<b>Beige</b>	for waxing, polishing and sensitive cleaning	19.15380
<b>White</b>	for polishing	19.15390

## Normalpads 8mm Ø 406mm

From black to white decreasing hardness density.  
Pack of 10 units. Used with pad holder 19.15340.

<b>Black</b>	for rough cleaning	19.15351
<b>Green</b>	for cleaning (thorough cleaning)	19.15361
<b>Red</b>	for softer cleaning of sensitive floors	19.15371
<b>Beige</b>	for waxing, polishing and sensitive cleaning	19.15381
<b>White</b>	for polishing	19.15391

Other abrasives see page 60

# Accessories for ROLL Single disc machines



## Current limiter with soft start

19.14925

Maintenance-free, with long lifetime. The tripping of the fuse and work interruption time involved is avoided!

Without jerking soft start more safety and protection of the machine is guaranteed. Up to 3500 W.



## Industrial extension cable 10m

82.00112

3x2,5mm<sup>2</sup> incl. Schuko plug and coupling.

Features:

- VDE approved and approved
- for high mechanical loads
- with heavy-duty supporting element
- VDE cable type H07RN-F
- temperature range: -25 ° C to + 60 ° C
- striking color



## Extension cable 10m

82.00118

3x2,5mm<sup>2</sup> incl. Schuko plug and coupling.



## Cable drum 25 m

82.00125

3x2,5mm<sup>2</sup>

Features:

- for use on construction sites according to BGI 608 and permanent outdoor use, IP 44.
- extremely abrasion-resistant, roll-over resistant and has an extreme cut and tear resistance.
- acid and oil resistant, weather and microbe resistant.
- cold-resistant up to -40 ° C.
- 3 earthed sockets, splash-proof, with self-closing lids.
- overheat protection, overheat and overload indicator.
- extra sturdy tubular steel frame with exceptionally robust carrying handle with comfortable cable management.
- drum body made of special plastic with reinforcing ribs.



## Personal protection switch

82.00200

Safety cable IP44, 16A 250V ~ 30mA with mounted solid rubber plug + coupling



## Three-phase test plug 400V / 16 A 5-pin

82.00122

For testing and measuring the correct connection of sockets, extensions, power distributors, etc.

- Connection and rotating field test device
- 16 amp / 400 V, 5-pin, 6 H power
- Indicator lights are very bright a
- Protection class IP 44 - suitable for construction site

# Special discs for ROLL Single disc machines



## Grinding brush 400mm grey

19.15305

For cleaning contaminated industrial floors.  
Nylon brush with abrasive grits.



## Scrubbing brush 400mm white, rough

19.15310

Universal cleaning brush for shops, entrances etc.  
For tiles and synthetic floor coverings.  
Polypropylene fibre 0,7mm.



## Polishing brush 400mm brown (Union)

19.15330

For polishing wax, emulsions etc. to get a shiny surface.  
For cleaning synthetic floor coverings. Nature bristle.



## Liquid tank for Single Disc Machines

53.80120

For Single Disc Machine RO-1800.

To be installed on the pole of the machine.  
For applying detergent etc. during work.

Till 12l capacity.

# ROLL Parquet sanding machine Woody



- **Only one machine at the construction site**

The first machine of its kind for rough grinding to fine grinding

- **Significant reductions in the edge work**

Working right up to the edge area

- **Flexible use**

For renovation or new installation of parquet  
also for floating installed parquet floors

- **Very high performance**

High weight, high speed, high point pressure

- **Dust-free working**

With the integrated dust extraction device

### Easy to use

Handling like a Single Disc Machine.  
No attention to the sanding direction

### Robust handle bar

Professional drawbar with wide handles  
in a closed design, aluminium square tube and  
drawbar joint as high-strengthened construction

### Powerful

3000 watt motor power and 92 kg machine  
weight ensure high performance

### Ball rolls

To adjust the sanding pressure and easy  
handling of the machine. For the transport,  
transport wheels are included

### Operation

Through the 3-headed planetary head system  
less sanding steps are necessary

### Dust free work

The sanding dust is sucked with the integrated  
vacuum attachment and the connection of an  
external industrial vacuum cleaner





# ROLL Parquet sanding machine Woody



## Parquet sanding machine WOODY

24.70100

Professional parquet sanding machine with vertical sanding – the original!  
High engine power and torque, necessary weight, close-to-the-edge grinding and dust-free work distinguish the parquet sanding machine WOODY.

These characteristics of the WOODY make it possible to sand or brush (structure) the plank or parquet floor from rough sanding to fine sanding with just one machine.

- for rough sanding to fine sanding with only one machine
- for multi-layer and solid parquet
- significant time savings due to less sanding in the edge area
- dust-free for your health and for the pleasure of your client
- replaces the belt sanding machine for rough sanding and a multi-disc machine for fine sanding

### Technical specifications:

Working power:	3000 W, 230 V
Disc Ø:	3 x 140mm
Rotation:	800 rpm
Working width:	450 mm
Machine weight:	59 kg
Working weight:	92 kg

### Included in delivery:

- 6 discs Ø 140mm for velcro sanding discs
- pad holder (use as single-disc machine)
- vacuum system with suction hose and bushing
- transport wheels
- ball caster



## Parquet sanding machine WOODY "Junior"

24.70101

Junior version of the parquet sanding machine WOODY.

With reduced engine power and weight the WOODY Junior becomes predominant used on weakly secured construction sites.

### Technical specifications:

Working power:	2200 W, 230 V
Disc Ø:	3 x 140mm
Rotation:	680 rpm
Working width:	450 mm
Machine weight:	52 kg
Working weight:	85 kg

### Included in delivery:

- 6 discs Ø 140mm for velcro sanding discs
- pad holder (use as single-disc machine)
- vacuum system with suction hose and bushing
- transport wheels
- ball caster

## Edge sander Nova

24.80000

Lightweight and powerful parquet edge sanding machine

- Lightweight and agile
- High grinding and working speed
- Efficient dust extraction
- Easily replaceable sanding arm

### Technical specifications:

Voltage:	230 V / 50 Hz
Working power:	1150 W
Working weight:	7,9 kg
Rotation:	3.200 min <sup>-1</sup>
Disc Ø:	150 mm
Sanding arm:	130mm

Sanding discs see page 63



## Long sanding arm for edge sander Nova

24.80002

Easily replaceable sanding arm for use of the edge sanding machine Nova under radiators.

Length 330mm





# ROLL Parquet sanding machine Woody



## Diamond disc Ø 140mm

For rough sanding with the parquet sanding machine Woody. Designed to remove all types of paints and oils, also with lubricating surfaces.

Grit 40  
Grit 60

53.16146  
53.16156



## Velcro sanding disc Ceramic Ø 140mm

Developped especially for the rough sanding with the parquet sanding machine WOODY. Pack of 30 units.

Grit 40  
Grit 50  
Grit 60

53.16040  
53.16050  
53.16060



## Tungsten carbide disc Ø 140mm

For the rough sanding with the parquet sanding machine WOODY for very hard or lubricious surfaces and greatly toothed parquet floors.. Pack of 3 units.

**+ more efficiency**  
**+ longer lifetime**

Grit 36  
Grit 60

53.16100  
53.16110



## Velcro sanding disc Zircon Ø 140mm

for Parquet sanding machine Woody. Premium quality for professionals. Grain: Zirconia fully resin bonded. Pack of 30 units.

Grit 24  
Grit 36  
Grit 40  
Grit 60  
Grit 80  
Grit 100

53.14024  
53.14036  
53.14040  
53.14060  
53.14080  
53.14100



## Velcro sanding disc Aluminium Oxid Ø 140mm

For fine grinding with the Parquet sanding machine Woody. Premium quality for professionals. Pack of 30 units.

Grit 60  
Grit 80  
Grit 100

53.13060  
53.13080  
53.13100



## Superfinishing Pad Ø 140mm

For the final sanding and finish sanding with perfect result on all wooden and parquet floors with the Parquet sanding machine WOODY. Pack of 30 units.

Grit 60  
Grit 80  
Grit 100  
Grit 120

53.15060  
53.15080  
53.15100  
53.15120



## Wood structuring brush Ø 140mm

For structuring the surface.

Steel brush

24.70205

Nylon brush grit 36  
Nylon brush grit 46  
Nylon brush grit 70  
Nylon brush grit 120

24.70210  
24.70220  
24.70230  
24.70240

# ROLL Parquet sanding machine Woody



## Vacuum hood 115mm for WOODY

53.10605

For use with the planetary head.

## Vacuum hood 90mm for WOODY

53.10610

For use with the pad holder.

## Vacuum hood with supporting ring for WOODY

53.10621

For use with wood structuring brushes.



## Pad holder Ø 430mm for WOODY

24.70120



## Sanding disc Ø 140mm for WOODY

53.00300

With velcro.



## Intermediate disc for sanding disc Ø 140mm

53.00315

Flexible pad to protect the sanding discs.  
Pack of 15 units.



## Turbo Fiberpad

Ø 406mm for single disc machines  
Ø 150mm with Velcro for edge sander

19.15560

19.15570

The unique Fiberpad was developed for the final sanding of parquet floors and the deep cleaning of various surfaces such as wood and stone.

For the fine sanding of parquet floors, the Fiberpad replaces the classic sanding discs with 80 and 100 grit.

Thanks to the open fiber structure, the fiber pad offers a very high sanding performance and excellent dust extraction while also ensuring a scratch-free finish.

# Industrial vacuum cleaners



## Industrial vacuum cleaner 3450

19.15100

Powerful industrial vacuum cleaner, 3-engined, with filter class M, incl. filter cleaning system, incl. accessories.

The industrial vacuum cleaner 3450 has 3 individually switchable bypass suction motors in a robust metal housing, isolated to reduce the loudness.

Two placed at the sides handles allow easy lifting the motor head.

A vacuum indicator allows the continuous monitoring of the proper operation and possible filter clogging. A warning light shows any filter problems.

This industrial vacuum cleaner has a star filter with 3m<sup>2</sup> filter surface. By external filter cleaning device the filter is moved vertically is cleaned in order to guarantee a long service life of the filter and a constant suction output.

The mobile storage container can be lowered and be emptied quickly and safely. The vacuum cleaner is mounted on a robust steel frame with non-marking castor wheels and brake.

### Technical specifications:

Power:	3450 W (3 engines 230 V / 50 Hz)
Airflow:	540 m <sup>3</sup> /h
Negative pressure:	25 kPa
Capacity:	60 l
Filter surface:	30000 cm <sup>2</sup>
Weight:	68 kg
Size:	65 x 66 x 134 cm
Filter class:	M

### Accessories (incl.):

Hose 50mm nominal diameter, length: 5m, suction tubes, floor nozzle.



## Star filter for industrial vacuum cleaner 3450

19.15112

Filter class M

## H-filter for industrial vacuum cleaner 3450

19.15111

Filter class H



## Industrial vacuum cleaner 2300

19.15206

Powerful yet quiet industrial vacuum cleaner, 2-engined, with filter class M, incl. filter cleaning system, incl. accessories.

The industrial vacuum cleaner 2300 has 2 individually switchable bypass suction motors in a robust metal housing, isolated to reduce the loudness.

Two placed at the sides handles allow easy lifting the motor head.

This industrial vacuum cleaner has a star filter with 2m<sup>2</sup> filter surface. By external filter cleaning device the filter is moved vertically is cleaned in order to guarantee a long service life of the filter and a constant suction output.

The mobile storage container can be lowered and be emptied quickly and safely. The vacuum cleaner is mounted on a robust steel frame with non-marking castor wheels and brake.

### Technical specifications:

Power:	2300 W (2 engines 230 V / 50 Hz)
Airflow:	360 m <sup>3</sup> /h
Negative pressure:	25 kPa
Capacity:	45 l
Filter surface:	20.000 cm <sup>2</sup>
Weight:	48 kg
Size:	53 x 60 x 120cm
Filter class:	M

### Accessories (incl.):

Hose 50mm nominal diameter, length: 5m, suction tubes, floor nozzle.



## Star filter for industrial vacuum cleaner 2300

19.15207

Filter class M

# Industrial vacuum cleaners



## H-filter set for industrial vacuum cleaner 2300

19.15217

Consisting of an intermediate boiler piece and a class H cartridge filter.



## H-filter for industrial vacuum cleaner 2300

19.15218

Class H replacement cartridge filter for H filter set for industrial vacuum cleaner 2300



## Dust bag longopack for vacuum cleaner 2600

19.15123

19.15123/1

20 meters of endless hose, 1 piece  
20 meters of endless hose, pack of 4 pieces



## Object nozzle with wheels 45cm

19.15044/1

Including brush and rubber strip

## Set of brushes 45cm for object nozzle

83.00900

## Set of rubber strips 45cm for object nozzle

83.00950

## Object nozzle with wheels 37cm

19.15057

Including brush and rubber strip



## Suction hose kit Ø 50mm, length 5m with connectors

19.15036

To optimize the suction power on the grinding machine RO-250 / RO-300 / RO-400 in connection with 2-motor vacuum cleaner.



## Cone adapter

86.00059

For connecting different suction sleeves  
Connection with 4 conical steps: 27mm, 32mm, 35mm, 37mm



## Reducing connector 52,2mm - 38,2mm

83.02023

For connecting the standard 38mm suction pipe to the 50mm hose.



## Y-connection set for 38mm hose

19.15039

Including connector and hose.

To connect two industrial vacuum cleaners to the machine or dust separator.

# Industrial vacuum cleaners



## Industrial vacuum cleaner 1450MF

19.15131

Professional device for industrial use. The multifilter improves the air filtration and also withstands difficult dusts (cement, gypsum, soot particles etc.). With stainless steel container and rubberized rollers.

NEW: With additional motor protection filter

- very compact
- extremely powerful
- with additional socket with automatic switch-on

### Technical specifications:

Power:	1450 W
Airflow:	245 m <sup>3</sup> /h
Negative pressure:	40 kPa
Capacity:	30 l
Weight:	13,3 kg
Size:	45 x 45 x 76 cm
Filter class:	M

Accessories (incl.):

Hose 38mm nominal diameter, length: 5m, suction tubes, floor nozzle.



## Multifilter for industrial vacuum cleaner 1450MF

79.40000

Filter class M

## Cartridge filter for industrial vacuum cleaner 1450MF

79.40005

Motor protection filter in the suction head

## Fleece bags for industrial vacuum cleaner 1450MF

19.15134

Pack of 10 units

## Adapter for fleece bags

79.40027



## Industrial vacuum cleaner 1350

19.16850

Powerful and robust wet and dry vacuum cleaner with large capacity and high suction power. Approved for class M dusts of moderate danger such as hardwoods, mineral dusts and paints.

The automatic filter cleaning system cleans the main filter by reversing the air flow and thus ensures constant suction power.

- very compact and robust
- Automatic filter cleaning system (filter shaker)
- Additional socket with automatic switch-on for connecting power tools up to 2400 watts of power

### Technical specifications:

Power:	1350 W
Airflow:	275 m <sup>3</sup> /h
Negative pressure:	25 kPa
Capacity:	26 l
Weight:	21,0 kg
Size:	62x38x54cm
Filter class:	M

Accessories (incl.):

Hose 38mm nominal diameter, length: 5m, suction tubes, floor nozzle.

## Flat filter PTFE coated

79.70015

Main filter with PTFE coating and filter class M.

The Teflon coating makes the filter easier to clean and doesn't clog up as quickly.

## Adapter for the tool box

79.70030

Standard Systainers can be mounted on the vacuum cleaner using the adapter.



# Industrial vacuum cleaners



## ROLL dust separator

19.15032

Maximize the efficiency of your industrial vacuum cleaner!

The ROLL dust separator captures up to 99% of the dust before it reaches your vacuum cleaner, no filter clogging and no loss of suction. Thus, the durability of the filter and the vacuum cleaner is substantially increased. Easy to use, effective in the result.

- + protects the vacuum cleaner filter
- + no loss of suction
- + no clogging of the filter
- + easy to empty
- + 5 castor wheels design prevents tilting of the dust separator
- + steel tank with inner coating

Delivered with cyclone, 45l steel tank, wheeled base, connectors and hose, dust bag.

## Dust bag for dust separator

80.10055

Pack of 10 pieces.  
Made of LDPE, real 140my. 610x800mm.

## Steel tank 45l

80.10040

For replacement with a larger volume of dust.



## ROLL dust separator - antistatic

19.15034

Antistatic version. Delivered with antistatic cyclone, 45l steel tank, wheeled base with antistatic tape, antistatic suction hoses 1x2m and 1x8m and connectors.



## ROLL dust separator - Longopac

19.15033

Longopac version of the popular ROLL dust separator.  
Designed to absorb large quantities of grinding and milling material.

Dust removal via the Longopac system in the 20 meter long endless hose offers many advantages over conventional disposal in the container:

- dustfree because the dust is sealed directly in the hose
- fast change reduces machine downtime
- higher capacity of the cleaner

Delivered with cyclone, wheeled base, connectors, hose and 20m dust bag.

Dust bag Longopac see page 35

# Industrial vacuum cleaners



## Air cleaner 1800

19.15235

The air cleaner 1800 generates negative pressure in the room and absorbs the dust particles in the air, thus a lowdust renovation is guaranteed. Dust can no longer spread into the adjoining rooms and thus reduces cleaning work after the renovation.

The use of the air cleaner 1800 stands for professional appearance and adds value for your customer. The air cleaner 1800 can be set up quickly and easily. The air cleaner 1800 has two filter technology with a prefilter G4 and a HEPA filter.

### Special features:

- compact and powerful
- filters up to 99.995% from the room air
- maximum air output 1800 m<sup>3</sup> / h
- adjustable fan motor
- quiet operation
- ergonomic handle

### Technical specifications:

Power:	420 watts, 230 volts
Air volume:	1800 m <sup>3</sup> / h
Prefilter area:	0.5 m <sup>2</sup>
Microfilter area:	5.0 m <sup>2</sup>
Filter class:	M (H optionally available)
Outlet Ø:	300 mm
Inlet Ø:	165 mm
Dimensions:	40 x 40 x 40 cm
Weight:	20.0 kg



## Microfilter "H" for air cleaner 1800

79.00200

5,0 m<sup>2</sup> filter surface

## Pre-filter "G4" for air cleaner

79.00201

0,5 m<sup>2</sup> filter surface



## Flexible PVC spiral hose Ø 254mm, 5m

79.00210

for air cleaner

## Exhaust hose Ø 175mm, 3m

79.00215

for air cleaner

# Scrapers and grinding stones



## Flooring scraper with telescopic handle

15.12655

Robust model. Telescopic handle included.  
Length from 97 to 175cm. Blade width 210mm.  
Slightly inclined scraper head for more aggressive work.

## Spare blades for Flooring scraper

15.12657

210mm, Pack of 10 units



## Scraper Allway long 500mm

15.12645

Blade width 100mm.  
With one single turn the blade can be fixed or loosen.

## Scraper Allway 250mm

15.12650

Blade width 100mm.



## Hand scraper 540mm with hammer end

15.12644

Blade width 125mm.  
Premium scraper with hammer end.

## Blades for hand scraper 125mm

15.12602

Pack of 10 units



## Scraper 250mm

15.12641

Blade width 100mm.  
Scraper for universal use.  
With hammer end.

## Blades for scrapers 100mm

15.12600

Pack of 100 units



## Jerking scraper 80mm

15.13328

With thick blade, beveled. With hammer end.

## Jerking scraper 70mm

15.13330

Sharpened blade.



## Tungsten carbide grinding block

Due to side edge very effective alongside walls.  
Size: 195x125x25mm.  
Grit 24  
Grit 36

19.13485

19.13486



## Hand grinding stone „flash“ 200mm

Made of silicium carbide, due to holes very aggressive.  
Size: 200x100x35mm  
Grit 20  
Grit 36

19.13482

19.13481

# Linoleum and PVC installation tools



## Lino strip cutter Vario 110

15.12421

Professional tool for cutting stripes of lino, PVC, CV and rubber floors, from 0 till 110mm. Can also be used as an edge trimmer. Stepless adjustment of the cutting width. Ergonomic design.

With the unique ROLL-3-blades-system – due to the slightly inclined blades floors can be cut very easily.

Convertible to cutting bar till 355mm!

## Lino strip cutter Vario 355

15.12425

Compare Vario 110. For cutting stripes from 0 till 355mm.



## Cutting bar for Vario 110

15.12428

For lino strip cutter Vario 355, for stripes till 110mm. Works with ROLL-3-blades-system.



## Cutting bar for Vario 355

15.12424

For lino strip cutter Vario 110, for stripes till 355mm. Works with ROLL-3-blades-system.



## Blades

15.12423

for lino strip cutter Vario 110 and 355. Pack of 20 blades



## Edge Trimmer ROLLlino 12mm

15.12434

For cutting production edges. Easy cutting due to the special position of the blades. Ergonomic design. Blade changing and blade adjustment easy and fast.



## Edge Trimmer ROLLlino 22mm

15.12436

For cutting production edges with a wider cut of 22mm. Easy cutting due to the special position of the blades. Ergonomic design.

## Blades for Edge Trimmer ROLLlino

15.12435

For Edge Trimmer 15.12434 und 15.12436. Pack of 10 units.



## Edge-bevel cutter

15.12448

To clean and bevel the cut edge when laying of LVT Design Flooring planks or tiles. This ensures that the planks are assembled precisely.

With ergonomic handle design and rotating blade. Blade change without tools.



## Leister hand groover Groovy

16.13940

To prepare grooves without grooving machine.

Including grooving blade 3,5mm.

With guide rollers and adjustable groove depth.

## Grooving blade 3,5mm

16.13941

## Grooving blade 2,5mm

16.13942

For Leister hand groover Groovy



## Hand groover Easy

16.13946

Hand groover Easy for grooving the welding groove before welding elastic floor coverings. Ergonomic, quick and precise with side support rollers, front guide nose and rear guide roller. Depth-adjustable blade 3,5 mm at the front and back for the perfect cut right up to the wall.

## Front grooving blade 3,5mm for hand groover Easy

16.13947

## Rear grooving blade 3,5mm for hand groover Easy

16.13948



# Linoleum and PVC installation tools



## Floor scriber

16.14060

Combined tool, can also be used as a short scriber for base boards. Pointed blade and needle included.

**Pointed blade** for 16.14060, pack of 5 units

16.14061

**Needle** for 16.14060, pack of 10 units

16.14062



## Height scriber

16.14051

To mark a fix height e.g. for base boards, from 10 to 150mm. Robust model. Pencil included. Delivery in a convenient box.



## Scriber 385mm

16.14067

With needle (for walls)



## Corner knife

16.13984

Exchangeable special blade for individual applications. (comes without blade)

Blade No. 1, Pack of 2 units

16.13988

Blade No. 2, Pack of 2 units

16.13986

Blade No. 3, Pack of 2 units

16.13987

Blade No. 4, Pack of 2 units

16.13985



## Hand groover

16.13950

With 5 blades

**Spare blades** for Hand groover 16.13950, pack of 10 units

16.13960



## Hand groover for safety floors

16.13981

**Spare blade** for Hand groover 16.13981, per unit

16.13982



## Hand groover for rubber and PVC

16.13970

With U-blade

**Spare blades** U-Form for Hand groover 16.13970, pack of 10 units

16.13980



## Triangle scraper of carbide

16.13968

Hand groover for safety floors. Carbide blade included.

**Spare blade** of carbide for Triangle scraper 16.13968

16.13969

# Linoleum and PVC installation tools



## Linocutter ROLLlino

15.12639

Professional seam cutter for lino, PVC and vinyl (LVT).

Overlying lines of lino can be slit and cut exactly in the right position of the underlaying material.

### Advantages:

- robust baseplate runs on bearings and thus the Linocutter ROLLlino slides easily on top of the floor – important for sensitive design floor coverings and PU-coated floor coverings
- blades are slightly bent which ensures effortless scribing/cutting
- stepless adjustment of cutting width and cutting depth
- due to the cut-out in the baseplate the Linocutter ROLLlino can be lead easy at the edge of the floor
- Linocutter ROLLlino works with customary trapezium or hook blades
- besides trapezium blades also hooked blades can be added:  
special advantage: thin floor coverings can be cut in one step
- blade changing without extra tools



## Grooving machine Easy 5000

16.13670

For grooving all kinds of synthetic floors, lino and rubber. Very handy machine which follows uneven floors easily and guarantees professional grooving results.

With stepless adjustment of grooving depth. Side wheel adjustable for coverings with nubs. With vacuum system to connect vacuum cleaners for chip free work.

Delivery in metal carrying case including carbide blade, chip bag and holding bar.

### Technical specification:

Power:	830 W, 230 V
Rotation:	5000 rpm
Weight:	4,5 kg
Carbide blade:	130mm, 12 teeth
Cutting depth:	0 - 5,0 mm stepless

## Chip bag for Easy 5000

74.00250

## Holding bar for Easy 5000

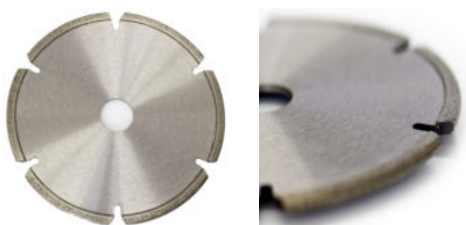
74.00140



## Carbide blade for Grooving machine Easy 5000

16.13680

130 x 3,2mm, 12 teeth trapezium



## Diamond blade for Grooving machine Easy 5000

16.13690

130 x 3,3mm, for safety floors

# Linoleum and PVC installation tools



## Leister welding machine Unifloor 500

16.13891

Leister's reliable automatic floor welder, UNIFLOOR 500, is a fresh and reimagined version of the proven UNIFLOOR E/S models. It is suitable for welding the joints in resilient floor coverings made of plastic such as PVC, CV, PUR, antistatic ESD floors, as well as for sealing the joints in natural coverings made of linoleum and rubber. Thanks to its sophisticated design and the Automatic Nozzle Positioning (ANP) developed by Leister, the UNIFLOOR 500s hot air blower can be automatically rotated in and out by pressing the start button.

### Special features:

- automatic nozzle rotation device
- welding rod pressure roller can be raised and locked
- integrated side cutter

### Technical specifications:

Power: 2300 W, 230 V , 50/60Hz  
Temperature: 100 - 560°C stepless  
Air flow range: 45-100%  
Speed: 0,7 - 7,5 m/min  
Nozzle air slide [mm]: small, 1.6  
Size (LxBxH): 562 x 289 x 440mm  
Weight: approx. 15,5kg



## Welding car

16.13795

Professional tool to make an easier job with hand hot air tools i.e. set of Welding car and Hot air tool works similar to a welding machine.

For welding PVC, rubber, lino and polyolefins. For short lanes as well as large areas. Due to the rubber clip (quick-fastener) all customary hot air tools (Leister Triac, Forsthoff, Steinel) can be fixed fast and easily.

Due to front and back rollers the system can lead stabilised in the grooved seam. Working angle adjustable.

For cooling the hot air tool, just tilt system backwards.  
(Delivery without hot air tool)



## Leister hot air tool Triac ST

16.13796

The successor to the legendary Leister Triac S is characterized as its predecessor through handling, reliability and versatility.

For welding PVC, rubber, polyolefins and lino floors.  
Ideal to use with Welding car 16.13795.  
Incl. Round nozzle 16.13830. Delivery in carrying case.

### Technical specification:

Power: 1600 W, 220 V  
Temperature: 40-700 °C, stepless



## Leister hot air tool Triac AT

16.13794

The TRIAC AT is an intelligent hot-air hand tool for welding and shrinking plastics that is suitable for on-site use. With large digital display and intelligent «e-Drive» operating unit.

### Special features:

- the set temperature levels off automatically, voltage fluctuations are compensated
- the thermowell in front of the heating element guarantees precise temperature
- the air volume can be adjusted independently of the temperature

Incl. Round nozzle 16.13830. Delivery in carrying case.

### Technical specification:

Power: 1600 W, 220 V  
Temperature: 40-700 °C, stepless  
Air flow: 120 - 240 l/min



## Leister MINIFLOOR drive unit

16.13885

The MINIFLOOR is the only automatic welder in the world that offers the possibility to connect a hot-air hand tool e.g. Triac ST or Triac AT in the simplest manner. The quick-lock fastening system at the clamp allows for assembling / dismantling of the TRIAC in a matter of seconds. Its use is worthwhile from weld lengths of 1,2m. The sophisticated technology of the drive unit and the drive-sensors enable welding directly from the wall. There is only one required joint along the weld seam, and that saves time! The 51mm minimum distance from the wall, ensures trouble-free welding around construction pipes and L-skirts. Weighing in at 6,6 kg including a TRIAC AT and nozzle the MINIFLOOR is a lightweight solution among comparable welders and is easily transportable. Perfect directional stability thanks to double-axis drive.

### Technical specification:

Power drive unit: 15 W  
Voltage / Frequency: 230 V , 50/60Hz  
Speed: 0,5 - 5,0 m/min  
Dimensions drive unit (LxWxH): 310 x 225 x 245mm  
Weight drive unit: 5,3 kg

# Linoleum and PVC installation tools



## Hot air welding case Roll

16.13797

In delivery included:

- Leister hot air tool Triac ST (16.13796)
- Hand groover (16.13950)
- Speed welding nozzle (16.13860)
- Quarter moon knife (16.14040)
- Trim guide (16.14050)
- Round nozzle (16.13830)
- Diamond knife sharpener 150x60mm (16.13865)

## Hot air welding case Roll with Triac AT

16.13798

See 16.13797 but with Leister hot-air welding tool Triac AT with digital display



## Round nozzle (tip)

16.13830

For welding with speed welding nozzles.



## Round nozzle (tip) for radiators

16.13785

For welding under radiators. In conjunction with speed welding nozzles.



## Speed welding nozzle

16.13860

5mm: for 4mm welding wire.



## Speed welding nozzle 5/2mm

16.13856

For welding sensitive PVC- floor coverings, thinner wall coverings. With narrowed slot (2mm) to concentrate the heat stream straight into the center of the seam.



## Speed welding nozzle 5/1mm

16.13855

Polyurethan nozzle – For welding sensitive PVC- floor coverings, thinner wall coverings. With narrowed slot (1mm) to concentrate the heat stream straight into the center of the seam.



## Swan neck nozzle

16.13783

attachable to universal adapter for pressing the seam in curves and corners.



## Brush for nozzles

16.13872

Made of brass to clean welding nozzles.  
Size: 300x100x5mm



## Pressure roller convex

16.14010

Used in conjunction with welding nozzles, in case of edge- and base board welding.



# Linoleum and PVC installation tools



## Trimming knife Mozart

16.14025

Safe and fast tool for trimming the welding wire.  
With integrated pre-cut slide, exchangeable blade. 1 blade included.

## Spare blades for Trimming knife Mozart

16.14026

Pack of 5 units

## Distance fork 0,5 for Mozart trimming knife

16.14027

For PVC

## Distance fork 0,7 for Mozart trimming knife

16.14028

For linoleum



## Quarter moon knife

16.14040

For trimming welding wire. Both sides sharpened.



## Quarter moon knife, angled

16.14041

For trimming welding wire. One side sharpened.



## Leather case for Quarter moon knife

16.14042



## Trim guide

16.14050

For Quarter moon knife



## Diamond knife sharpener

16.13865

Double sided grit 400 and grit 600, size 150x60mm.  
To sharpen knives e.g. quarter moon knife.  
Comes in a box with non-slip underlay.



## Eraser

16.13861

80x50x20mm. Recommended for removing slightly burned or shining stains.  
For grinding, polishing, matting or cleaning metal, paint, wood, ceramic  
and plastic materials.



## Hollow punch

for repair of floor coverings

Ø 30mm  
Ø 40mm

15.12675  
15.12676

# Linoleum and PVC installation tools



## Lino rollers

Pressure rollers, zinced

4-parts, 50kg, width 500mm  
3-parts, 34kg, width 370mm

15.13620  
15.13630

Additional weights upon request!

## Transport cradle for lino rollers

15.13635

Suitable for 50kg and 34 kg lino rollers.

With elastic wheels.



## Pressure roller RO-26

16.14030

With 26 ball bearings for comfortable and firm pressing the seam when laying LVT vinyl design flooring, linoleum and PVC, carpet etc.

Through the patented design an optimized force distribution is reached, the seam can be pressed bubble-free up into the edge area.

Working width 130mm with a total of 26 ball bearings.



## Pressure roller with solid handle

16.14033

To press the seam when laying elastic floor coverings and press down the groove on click coverings.

With 2 rolls 40mm wide.  
Length 195mm.



## Pressure cork

15.13510

300x120x25mm



## Pressure hammer

15.12840

Made of one piece, forged, with polished claw hammer



## Broom with horse hair 60cm

15.14360

without handle



## Broom with synthetic hair (Arenga) 60cm

15.14361

without handle



## Steel tube handle for broom and spreading knives

15.14364

# Linoleum and PVC installation tools



## Cold welding liquid 1 litre

16.14100

Premium cold welding liquid for cold welding PVC and CV. Recommended by all well-known manufacturers. In conjunction with Working tool 1 or 2, for 300 – 400m seam.



## Working tool with nozzle 1 (A)

16.14090

For cold welding liquid, for new, tightly cut seam (<1mm). Bottle with thin needle nozzle.



## Working tool with nozzle 2 (C)

16.14120

For cold welding liquid or repair paste, for old, badly cut seams, shrinkings and PVC base weldings (>1mm). Bottle with round nozzle to pour liquid in it.



## Working tool with nozzle 2 (C) special

16.14150

For repair paste, for PVC wall coverings. Bottle with slotted nozzle (extra wide nozzle).



## Repair paste 1 litre

16.14130

Used with working tools 16.14120 or 16.14150, for 200m seam.



## Cleaning bottle

16.14160

Includes cleaning liquid for cleaning and storing used nozzles.



## PVC paste remover 1 litre

16.14170

For cleaning and matt finishing of dirty and shiny seams.



## Cold welding liquid in tubes

Premium cold welding liquid for cold welding PVC and CV. Recommended by all well-known manufacturers. Tube of 50g for approx. 25m seam.

## Tube with nozzle 1 for new seams (< 1mm)

16.14180

Per unit  
Price per box of 30 units - 10% savings!



## Tube with nozzle 2 for old seams (>1mm)

16.14190

Per unit  
Price per box of 30 units - 10% savings!

# Carpet installation tools



## Knee kicker de luxe

13.11490

For carpet stretching.  
Adjustable length and pin depth.



## Kombi stretcher (Ministretcher)

13.11630

For carpet stretching. 2 heads with pins, with ratched handle and repair head. Delivery in a box.



## Heat bond iron 220 Volt

13.11720

With teflon-coated base.



## Super - Golden seaming tape 60g

14.11730

For woven carpets, jute materials and synthetic back or very rough back.  
Roll of 50m



## Strip cutter

15.12420

For cutting carpets, for base boards.  
Adjustable from 45 – 100mm.

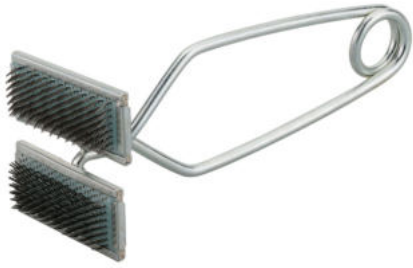
## Spare blades for 15.12420

15.12560

Pack of 100 units



# Carpet installation tools



## Carpet seam squeezer

13.11650

For clamping together the carpet head seams.



## Moulding lifter 250mm

15.12280



## Stair tool 90mm

15.12290



## Carpet seam roller 127mm

15.11661

With stars.



## Pile brush

15.11660

for seam treatment by tapping movements during fabrication.  
Dimensions: 18x5x4cm



## Carpet awl

15.12300

Carpet awl - row finder



## Carpet clamp de luxe

17.14630

A Must-have, additional to our stripper machines!  
Ergonomic design, made of a special aluminium-alloy.

For carpet cutting tools, see page 67

# Parquet installation tools



## Parquet shunting tool 55mm

19.15701

Robust model, with PE-anvil, beveled point.



## Tapping block Universal

19.15704

Made of Polyethylene, with 2 working edges, 300x70mm.



## Tapping block 6mm

19.15705

Made of Polyethylene, 6mm x 400mm for laminate.



## Tapping block 11mm

19.15706

Made of Polyethylene, 11mm x 400mm for parquet.



## Tapping block flat

19.15707

Made of Polyethylene, 400mm for laminate and parquet.



## Rubber hammer white 800g

15.12830



## Rubber hammer white 1000g

15.12832

Very high-quality execution.  
Coated with white rubber.



## Engineers hammer 500g

15.12870

TÜV/GS tested



## Engineers hammer 300g

15.12860

TÜV/GS tested

# Parquet installation tools



## LVT flooring cutter IS-333

24.71135

For cutting LVT and cork floorings up to 16mm thickness.

### Technical specifications:

Blade width: 330mm  
Max. thickness: 16mm  
Dimensions: 630x440x350mm  
Cutting angle: 0-45°



## Parquet stripping blade

Blade of hardened steel, sharpened, with wooden handle.

40 mm

60 mm

90 mm

19.15730

19.15740

19.15750



## Scrapper with handle

19.15780

Universal tool with handle for higher power transmission when pulling on wooden floors.

## Blade for parquet scrapper

19.15785

40mm wide



## Rubber spatula 300mm

15.13320

For pre-coating



## Cleaning tissues

22.12980

For cleaning hands, tools and machines.

For removing adhesives, oil, fat, wax, paint, silicon, acryl, bitumen, tar, graphite etc.

Cleaning without water and soap, without residuum.  
Biodegradable.

Bucket of 72 tissues.



## Leveling spatula

15.13086

Stainless, with adjustable side edge from 2-15mm.

# Installation tools



## Flex spatula (double blade)

To apply and plane liquid materials.  
Classical straight blade, rounded edges.

200 mm  
270 mm  
350 mm

15.13098  
15.13099  
15.13091



## Spiked roller

With integrated splash guard.  
Without handle, suitable for telescopic arm 19.15815.

250mm x 11mm  
250mm x 31mm

15.13475  
15.13469

500mm x 11mm  
500mm x 22mm  
500mm x 31mm

15.13480  
15.13481  
15.13483

750mm x 11mm

15.13485



## Spiked roller with stainless steel spikes

With integrated splash guard.  
Without handle, suitable for telescopic arm 19.15815.

250mm x 13mm  
500mm x 13mm

15.13477  
15.13484



## Hobnailed shoes 25mm

With 25mm nails and fastening straps.

15.13460



## Hobnailed shoes 50mm

With 50mm nails and fastening straps.

15.13462



## Spike shoes

With approx. 20mm long nails.  
Size: L

15.13463



## Finishing trowel

Stainless steel, size 280x135mm

15.13350



## Finishing trowel

Blade hardened and polished.

300mm  
400mm  
500mm

15.13360  
15.13370  
15.13380



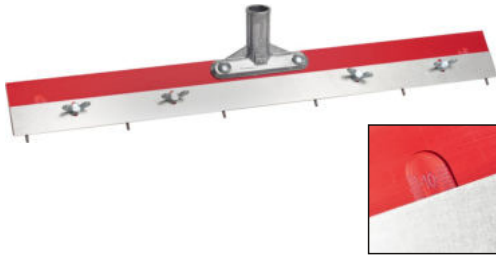
## Finishing trowel, flat

Blade hardened and polished.

400mm  
500mm

15.13390  
15.13410





## Pin leveller

15.13466

Professional tool for applying adhesive and leveling compounds.  
Base profile 600mm with 6 replaceable spikes.  
Applying height is adjustable from 0 to 11mm due to a stainless shim.  
(without telescopic arm)

## Replacement pins up to 11mm

15.13457

Set of 12 spikes.

## Replacement pins up to 20mm

15.13456

Set of 12 spikes. For spreading knives without adjusting scale.



## Spreading knife flat

15.13451

For applying different materials, for universal use.  
With wooden frame and flat, stainless blade 600mm.  
(without telescopic arm)



## Spreading knife with notched insert R 1

15.13450

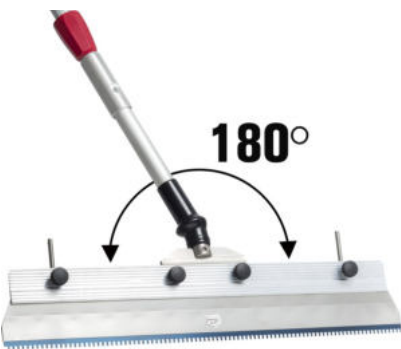
For applying adhesive and leveling compounds. With wooden frame and clamp to add notched inserts 560mm.  
Delivery including: 1 unit notched insert R1 (compare 15.13295), holder for poles e.g. telescopic arm (without telescopic arm)



## Spreading knife with notched insert R2 and 2 pins

15.13453

Professional tool for applying adhesive and leveling compounds on big areas in ergonomical upright position. Including 1 unit notched insert R2 56cm and a stainless shim for setting different levels. Delivery including holder for poles e.g. telescopic arm (without telescopic arm)



## Spreading knife with notched insert R2 and 2 pins

15.13454

Including movable jointing and telescopic handle

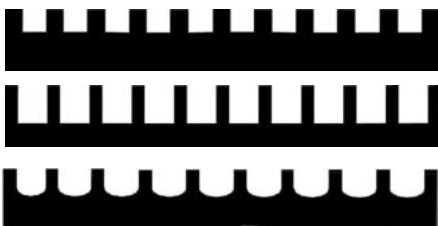
## Movable joint with telescopic handle

15.13458

Innovative moveable joint for notched and spiked trowels for applying adhesive and leveling compounds. Ergonomic working in the cross and transverse.

- 180° movable stainless steel joint head
- shaft made of aluminum tube
- telescopic rod adjustable to the respective body size of the user

Suitable to spreading knife R1, R2 and pin leveller.



## R1 notched inserts

15.13295

560mm 3,0x4,0x1,5mm, pack of 10 units

## R2 notched inserts

15.13281

560mm 5,0x4,0x2,0mm, pack of 10 units

## R3 notched inserts

15.13315

560mm 5,0x6,0x2,4mm, pack of 10 units



## Copper tape 0,08 x 10mm self-sticking

19.13944

To discharge electrostatic charging.  
Roll of 50m.

# Installation tools



## Adhesive spatula 180mm

Blade hardened and polished.  
Pack of 10 units

A1	15.13056
A2	15.13050
A3	15.13051
B1	15.13057
B2	15.13058
B3	15.13054
B5	15.13055
B6	15.13053
B7	15.13043
B10	15.13044
B11	15.13045
B13	15.13047
B15	15.13052
Spatula flat	15.13059



## Adhesive spatula 210mm

Blade hardened and polished.  
Pack of 10 units

A1	15.13060
A2	15.13062
A3	15.13063
B1	15.13070
B2	15.13080
B3	15.13072
B5	15.13071
B6	15.13073
B11	15.13066
B15	15.13068
Spatula flat	15.13061



## Adhesive spatula 250mm

Blade hardened and polished.  
Pack of 10 units

A1	15.13081
A2	15.13085
B1	15.13082
B2	15.13083
B3	15.13084
B13	15.13079



## Interchangeable spatulas

Blade hardened and polished,  
to use notched inserts.  
Pack of 10 units.

180mm	15.13090
210mm	15.13160
280mm	15.13230



## Aluquick

Ergonomic spatula to use notched inserts, made of aluminium

180mm	15.13300
280mm	15.13310



## Threshold ruler

Adjustable 75-110cm, stainless.

15.13540



## Notched inserts 180mm

For interchangeable spatulas and Aluquick, wear-resistant, pack of 10 units.

A1	15.13100
A2	15.13140
A3	15.13150
A4	15.13151
A5	15.13152



B1	15.13110
B2	15.13120
B3	15.13130
B5	15.13132
B6	15.13134
B11	15.13133
B15	15.13135
B16	15.13139



## Notched inserts 210mm

For interchangeable spatulas and Aluquick, wear-resistant, pack of 10 units.

A1	15.13170
A2	15.13210
A3	15.13220
A4	15.13221
A5	15.13222



B1	15.13180
B2	15.13190
B3	15.13200
B5	15.13202
B6	15.13204
B11	15.13203
B15	15.13205



S1 (Non Statik K)	15.13223
S2 (Non Statik TL)	15.13224
S3	15.13225



## Notched inserts 280mm

For interchangeable spatulas and Aluquick, wear-resistant, pack of 10 units.

A1	15.13240
A2	15.13280
A3	15.13290
A4	15.13291
A5	15.13292



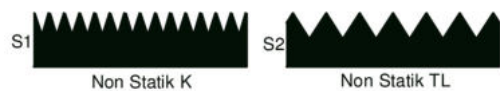
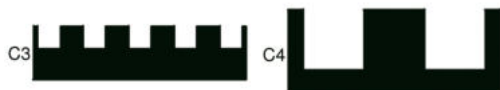
B1	15.13250
B2	15.13260
B3	15.13270
B5	15.13282
B6	15.13271
B11	15.13299
B15	15.13284



C1	15.13296
C2	15.13297
C3	15.13289
C4	15.13298



S1 (Non Statik K)	15.13293
S2 (Non Statik TL)	15.13294



Original size

# Installation tools



## Roller "Mohair"

19.15801

Professional roller cover made of Velour, 4mm pile height, 250mm wide, for 8mm bow.

Delivery without bow.



## Roller "Pacific"

19.15803

Professional roller with a special polyester blend cover, 11mm pile height, 250mm wide, for 8mm bow.

Suitable for coating and sealing of soils with aqueous systems.

Delivery without bow.



## Roller "Industria"

19.15810

Professional roller with nylon cover, 12mm pile height, 250mm wide, for 8mm bow.

Well suited for floor coatings.

Delivery without bow.



## Roller "Foam"

19.15811

Professional roller made of foam material, rounded on both sides, 80 mm outer diameter, 250mm wide, for 8mm bow.

Suitable for sealing.

Delivery without bow.



## Bow for roller 8mm

19.15813

for 250mm roller.



## Bow for roller 6mm

19.15809

for 250mm roller.



## Precoat and adhesive roller

19.15805

250mm with bow and unroll grid.  
For simple coatings, adhesive application, etc.



## Precoat and adhesive roller without unroll grid

19.15806

250mm with 8mm grid.  
For simple coatings, adhesive application, etc.



## Telescopic arm

19.15815

Adjustable till 2m. Suitable for Spiked spreading knives, spiked rollers and rolls.  
Made of aluminium, solid model.



## Wiper for rollers

19.15808

For cleaning color and paint rollers.  
Excess liquids are stripped off the roll back into the designated container.





## CCM – measuring instrument

20.14396

Calcium-Carbide-measuring-instrument for measuring moisture in screed. With shock-proof manometer. Direct reading of the CM%. Including: 20 carbide ampoules, 100g scale, beaker, hammer, lump hammer, flat chisel, steel ball set (4) and accessories. In metal carrying case. Digital manometer and printer upon request

## CCM – measuring instrument Eco

20.14398

The entry-level model for occasional measurements, very good price-performance ratio. Equipped with mechanical manometer with a maximum pressure range up to 1,6 bar and a robust precision spring scale, delivery in a robust plastic carrying case. (without picture)



**Carbide ampoules** for CCM, pack of 25 units

20.14400

**Carbide ampoules** for CCM, pack of 100 units

20.14410

**Testing ampoules** for CCM, 10 x 1 gram

20.14391



## Hydromette Compact B

20.14610

For measuring moisture in building materials, without damaging any surface. Very easy to use, with universally applicable ball sensor. In pocket size. With digital LCD. With battery. Ideal pre-tester for CCM to find the moistest area.



## Hydromette Compact B2

20.14616

The Hydromette Compact B2 is an electronic building moisture indicator for a non-destructive measurement of moisture in building materials. It uses the dielectric constant measuring / high frequency principle. The ball probe can be applied flexibly and is used for the detection of moisture in all kinds of building materials. It is also suitable for checking the dispersion of moisture in walls, ceilings and floors. The Hydromette has an audible alarm, which will resound if the values exceed the limit. Limits for the building materials can be set individually. An ideal pretester for use with all "CM" devices. The device is delivered fully equipped with battery and plastic box.

### Features:

- + direct readings for 7 types of building materials and 2 types of insulating materials as well as tendential indication for hard and soft wood
- + acoustic alarm function
- + automatic calibration
- + indication of the device's temperature/ambient temperature

# Measuring instruments



## Caisson moisture indicator VI-D1

20.14420

Very easy to use – switch ON – apply to the surface – read off digital result – compare with chart.

Especially for concrete and screed, as well as wood.  
Non destructive measurement. Digital LCD. Measure depth till 3cm.  
Measure sensor located at the bottom. Automatic power switch OFF.  
With battery. Soft leather carrying case included.  
Ideal pre-tester for CCM to find the moistest area.



## Caisson moisture indicator VI-D4

20.14421

Moisture meter for concrete and screed moisture.

The meter has different scales for measuring moisture in different materials. The gold-plated spring electrodes measure via electrical resistance. The 2 sensor plates use dielectric properties to measure the moisture content of the soil down to a few centimeters deep. The combined result of the measurement is output via the display. The high-quality transfective graphics display guarantees perfect readability of the values under all lighting conditions even in bright daylight.

Recommended as a pre-tester for CCM devices to determine the wettest point.



## Caisson Thermo- and Hygrometer LVT 15 IR

20.14426

Very easy to use - switch ON - adjust temperature or humidity measuring - lift the meter in the air - read digital result. For fast measuring of air temperature and air humidity, measuring in °C or F.

With dew point table on the rear side of the measuring instrument. Automatic power switch OFF. With battery. Soft leather carrying case included. With calibration certificate.

Temperature: from -10 till +50 °C  
Humidity: from 5% to 99%  
Humidity tolerance: +/- 2%  
Temperature tolerance: +/- 0,3 °C



## GANN Thermo-Hygrometer BL Compact TF 3

20.14626

The BL Compact TF 3 unit is a precise thermo hygrometer for measuring the temperature and air relative humidity in many applications (e.g. residential space, air conditioning, printing shops, warehouses, museums). The measuring sensor is exchangeable. Several of these sensors (plug-in TF stick) can be put in different places (environments). Thus, successive measurements in those places can be carried out more quickly, for long adaption times can be avoided (compared to a meter with fixed sensor).

Features:

- Handy pocket-sized moisture measuring meter for fast measurements
- Display of three values via LCD, resolution: 0.1 % or 0.1 °C
- Automatic calculation of dew point temperature
- Display of absolute air humidity in g/m<sup>3</sup>
- USB interface for transferring the measured values to a PC
- Min, Max and Hold functions for measured values
- Storage of the 5 most recent measured values
- Power supply: a 9-volt battery is included C



## Laser distance meter R40

20.14470

Including the basic functions for precise measurements: L/W/H, volume. Modern and compact device with high-quality display.

- All basic functions for precise measurements are available (L/W/H, volume)
- With integrated spirit level
- Up to three measurements can be saved
- Shockproof
- Laser: 0.05 to 40m
- Accuracy: +/-2mm

# Measuring instruments



## Surface hardness tester RI-RI

16.14074

For measuring of surface bonds and strength according to „scribe fences“.  
Consists of 2 parts, punched sheet (stainless) and a special hard metal pencil.



## Measuring wedge

15.12313

Aluminium 0-20mm, for measuring uneven subfloors.



## Steel angle

15.13520

100 x 50cm zined, rigid.



## Straight steel edge

15.13530

205cm zined



## Steel ruler

Stainless, slightly roof-shaped,  
8cm wide, furred.

205cm  
405cm  
505cm

15.13590  
15.13600  
15.13610



## T-head 50cm

15.13588

For steel rulers, to adjust 90°



## Template kit for steps

16.14080

The 6 arms of different length are positioned and settled at the corners  
of the step. That way the dimension of the step can be transferred fast and  
exactly on to the flooring.



## Abrasives Ø 380mm

For single disc machines, double sided, used with drive disc 19.14211.  
Premium quality for professionals. Silicium carbide on cloth/paper.  
Pack of 10 units.

Grit 16	19.14220
Grit 24	19.14230
Grit 36	19.14235
Grit 40	19.14240
Grit 60	19.14250
Grit 80	19.14260
Grit 100	19.14270
Grit 120	19.14267



## Abrasives Ø 400mm

For single disc machines, double sided, used with drive disc 19.14211/12.  
Premium quality for professionals. Silicium carbide on cloth/paper.  
Pack of 10 units.

Grit 16	19.14271
Grit 24	19.14272
Grit 36	19.14263
Grit 40	19.14273
Grit 60	19.14274
Grit 80	19.14275



## Pad holder Ø 380mm

19.15340

For Superpads and Normalpads, with exchangeable spiked plate.

## Spiked plate

52.00389

400mm for pad holder 19.15340



## Superpads 20mm Ø 406mm

From black to white decreasing hardness density.  
Pack of 5 units. Used with pad holder 19.15340.

<b>Black</b>	for rough cleaning	19.15350
<b>Green</b>	for cleaning (thorough cleaning)	19.15360
<b>Red</b>	for softer cleaning of sensitive floors	19.15370
<b>Beige</b>	for waxing, polishing and sensitive cleaning	19.15380
<b>White</b>	for polishing	19.15390



## Normalpads 8mm Ø 406mm

From black to white decreasing hardness density.  
Pack of 10 units. Used with pad holder 19.15340.

<b>Black</b>	for rough cleaning	19.15351
<b>Green</b>	for cleaning (thorough cleaning)	19.15361
<b>Red</b>	for softer cleaning of sensitive floors	19.15371
<b>Beige</b>	for waxing, polishing and sensitive cleaning	19.15381
<b>White</b>	for polishing	19.15391





## Sanding nets Ø 406mm

Used with pad holder and pad.  
Pack of 10 units

Grit 60	19.15400
Grit 80	19.15410
Grit 100	19.15420
Grit 120	19.15430
Grit 150	19.15435
Grit 180	19.15440



## Superfinishing Pad Ø 406mm

Pack of 10 units. Used with pads and padholder.  
For the final Finish of wooden floors and parquet with Parquet sanding machine WOODY and all customary single disc machines.

Patented texture - due to the multihole surface you get a nearly dustfree sanding, loading of the pad is reduced. With high removal performance and longer service life.

Grit 60	19.15510
Grit 80	19.15515
Grit 100	19.15520
Grit 120	19.15525
Grit 150	19.15530



## Wool pad Ø 410mm

19.15550

Non-abrasive. For the suction, or removal, excess oils & waxes.  
Thickness 5mm. Pack of 10 units.



## Turbo Fiberpad

Ø 406mm for single disc machines  
Ø 150mm with Velcro for edge sander

19.15560  
19.15570

The unique Fiberpad was developed for the final sanding of parquet floors and the deep cleaning of various surfaces such as wood and stone.

For the fine sanding of parquet floors, the Fiberpad replaces the classic sanding discs with 80 and 100 grit.

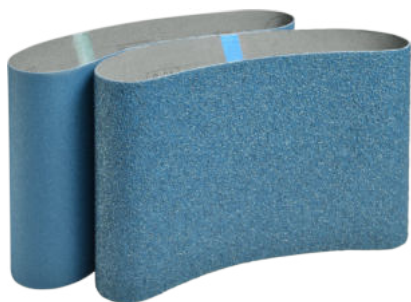
Thanks to the open fiber structure, the fiber pad offers a very high sanding performance and excellent dust extraction while also ensuring a scratch-free finish.



## Ceramic – sanding belts 750x200mm

Ceramic corundum for extremely high grinding performance and service life thanks to the special self-sharpening of the ceramic grain.  
Pack of 10 units.

Grit 36	24.60036
Grit 50	24.60060



## Zircon – sanding belts 750x200mm

Standard size, suitable for all customary belt sanders.  
Premium quality for professionals, made of heavy X-cloth with fully resin bonding.  
Grain: Zirconia, belts with waved joint.  
Pack of 10 units.

Grit 24	24.50024
Grit 36	24.50036
Grit 40	24.50040
Grit 60	24.50060
Grit 80	24.50080
Grit 100	24.50100
Grit 120	24.50120



## Sanding belts 750x200mm

Standard size, suitable for all customary belt sanders. Premium quality for professionals, made of heavy X-cloth with fully resin bonding. Grain: Aluminium Oxid, belts with waved joint. Pack of 10 units.

Grit 16	24.00016
Grit 24	24.00024
Grit 36	24.00036
Grit 40	24.00040
Grit 60	24.00060
Grit 80	24.00080
Grit 100	24.00100
Grit 120	24.00120



## Ceramic – Velcro sanding discs Ø 178mm

Ceramic corundum for extremely high grinding performance and service life thanks to the special self-sharpening of the ceramic grain.  
Pack of 25 units.

Grit 36	24.86036
Grit 40	24.86040
Grit 50	24.86050
Grit 60	24.86060
Grit 80	24.86080



## Zircon – Velcro sanding discs Ø 178mm

Zircon for significantly higher grinding performance and service life.  
Pack of 50 units.

Grit 24	24.22024
Grit 36	24.22036
Grit 40	24.22040
Grit 60	24.22060
Grit 80	24.22080
Grit 100	24.22100



## Velcro sanding discs Ø 178mm with center hole

Premium quality for professionals. Grain: white Aluminium Oxid.  
Pack of 50 units.

Grit 16	24.23016
Grit 24	24.23024
Grit 36	24.23036
Grit 40	24.23040
Grit 60	24.23060
Grit 80	24.23080
Grit 100	24.23100



## Ceramic – Velcro sanding discs Ø 150mm

Ceramic corundum for extremely high grinding performance and service life thanks to the special self-sharpening of the ceramic grain.  
Pack of 25 units.

Grit 36	24.85036
Grit 40	24.85040
Grit 50	24.85050
Grit 60	24.85060
Grit 80	24.85080



## Zircon – Velcro sanding discs Ø 150mm

Zircon for significantly higher grinding performance and service life.  
Pack of 50 units.

Grit 24	24.84024
Grit 36	24.84036
Grit 40	24.84040
Grit 60	24.84060
Grit 80	24.84080
Grit 100	24.84100



## Velcro sanding discs Ø 150mm with center hole

Premium quality for professionals. Grain: white Aluminium Oxid.  
Pack of 50 units.

Grit 16	24.83016
Grit 24	24.83024
Grit 36	24.83036
Grit 40	24.83040
Grit 60	24.83060
Grit 80	24.83080
Grit 100	24.83100



## Velcro sanding discs Ø 150mm 9 holes

8 suction holes 1 center hole. For normal orbital sander.  
Premium quality for professionals. Grain: white Aluminium Oxid.  
Pack of 50 units.

Grit 24	24.91024
Grit 36	24.91036
Grit 40	24.91040
Grit 60	24.91060
Grit 80	24.91080
Grit 100	24.91100
Grit 120	24.91120
Grit 150	24.91150

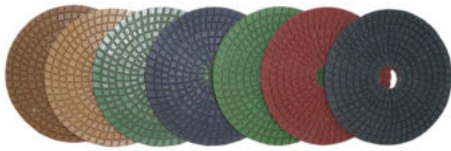


## Velcro sanding discs Ø 125mm

Premium quality for professionals. Grain: white Aluminium Oxid.  
For Edge sander ROMO-125, pack of 50 units.

Grit 40	24.70540
Grit 60	24.70560
Grit 80	24.70580
Grit 120	24.70595

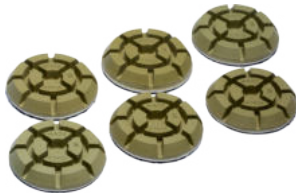
# Abrasives



## Diamond pads Ø 125mm

with dense diamond structure, long service life and high flexibility.  
Can also be used with ROMO-125 resp. RO-125 in combination with wood sanding kit. Per unit

Grit 50	19.14605
Grit 100	19.14610
Grit 200	19.14615
Grit 400	19.14620
Grit 800	19.14625
Grit 1500	19.14630
Grit 3000	19.14635



## Diamond polishing pads Ø 75mm with velcro

Resin diamond polishing pads for universal use for dry polishing and perfect fine sanding. Long service life due to high diamond content.

Grit 60	17.16960
Grit 120	17.16962
Grit 220	17.16964
Grit 400	17.16966
Grit 800	17.16968
Grit 1500	17.16970



## Sanding pad

For Multimaster and Supercut, set of 2 units

19.14936



## Sanding paper

For Multimaster and Supercut (with adapter)  
Pack of 50 units, without holes

Grit 40	19.14931
Grit 60	19.14932
Grit 80	19.14933
Grit 100	19.14934
Grit 120	19.14935



## Triangular brush stainless steel for Multimaster

19.14960

## Triangular brush nylon for Multimaster

19.14965

Grit 40



## Blades - Made in Solingen

Premium „Solingen“ quality.  
High-alloyed tool steel 0,65mm, ice-hardened.  
Pack of 10x10 units = 100 units. 10 units in a dispenser.



**Trapezium blade**  
**Trapezium blade, large**  
**Hooked blade**  
**Hooked blade, large**

15.12450  
15.12460  
15.12470  
15.12490



## Blades - Made in Sheffield

High-alloyed tool steel.  
Pack of 10x10 units = 100 units. 10 units in a dispenser.



**Trapezium blade**  
**Trapezium blade, large**  
**Hooked blade**  
**Hooked blade, large**

15.12450/3  
15.12460/3  
15.12470/3  
15.12490/3



## Blades with Titan-coating

Premium „Solingen“ quality. High-alloyed tool steel 0,65mm, ice-hardened.  
With Titan-coating for a long endurance. Pack of 10x10 units = 100 units.  
10 units in a dispenser.



**Titan - Trapezium blade**  
**Titan - Trapezium blade, large**  
**Titan - Hooked blade**  
**Titan - Hooked blade, large**

15.12455  
15.12465  
15.12475  
15.12495



## Trapezium-Hook blade

15.12480

Two in one, ice-hardened 0,65mm, premium „Solingen“ quality.  
Pack of 10x10 units = 100 units.



## Concave blade

15.12485

Ice-hardened 0,65mm  
Pack of 10x10 units = 100 units.



## Break-off blades 18mm

15.12590

Ice-hardened, for cutter knives 15.12494, 15.12596  
Pack of 10x10 units = 100 units.



## Titan - Break-off blades 18mm

15.12591

Ice-hardened, with Titan-coating for a long endurance.  
For cutter knives 15.12494, 15.12596  
Pack of 10x10 units = 100 units.



## MOZART blades

Premium „Solingen“ quality.  
High-alloyed tool steel 0,65mm, ice-hardened.  
Pack of 10x10 units = 100 units. 10 units in a dispenser.



**MOZART trapezium blade**  
**MOZART hooked blade**  
**MOZART hooked blade, large**

15.12452  
15.12472  
15.12491



# Knives



## Floor installer knife ROLL with holster

15.12548

Easy and fast blade changing without tool. Magnet included. Premium quality for professionals.



## Dolphin knife with holster

15.12550



## Shark knife with holster

15.12555



## Leather knife holder for professionals

22.14471

for 2 knives, incl. blade dispenser and pen holder.



## Universal knife MOZART S2

15.12525

Including protecting cap and blade.

- compact design and the legendary SCHILLER-shape
- coated surface for extra grip
- tool-free and magnet-supported easy blade change
- transparent protective cap for safe transportation
- tough fixation of blade
- hardened blade fixture for longer life time
- cartridge for up to 10 blades



## Cutter knife ROLL

15.12598

High-quality cutter knife with metal magazine for 18mm break-off blades. Incl. 6 break-off blades.



## Cutter knife NT 2000

15.12494

Premium knife made of metal with rapid magazine. Incl. 3 break-off blades 15.12590.



## Cutter knife light

15.12596

Incl. break-off blade.



## Handle for blades

15.12630

Without blade



## Blade Nr. 22

15.12610

For handle 15.12630  
Pack of 10 units

# Scissors and cutters



## Mitre cut shear 6cm

15.12800

For wooden and plastic profiles. 2 x 45 degree blocks.



## Mitre cut shear long

15.12795

With stop faces at 45° and 75 mm length of cut.

For wooden and plastic profiles. Suited to mitre cuts in wide materials.



## Mitre cut shear with Trapezium blade

15.12797

With stop faces at 45° and 50 mm length of cut.

For the particularly fine and filigree cut (f.ex. linoleum).



## Mitre cut shear with lever

15.12796

Suited to right-angled cuts in hard and flat plastic items, e.g. plastic-, PVC-, rubber- and wooden profiles. With stop faces at 90° and 75mm length of cut. Essential for floor layers, painters, carpenters, and many other trades.

It develops its power during the cutting process and develops its greatest effect at the end of the cut - where the force is strongest and the cut would cost a normal scissors great effort. With the help of leverage, the material is cut through with ease.



## Universal-cutter red

15.12400

For woven carpets with jute and double back. 10 blades included.

## Spare blades for 15.12400

15.12560

Pack of 100 units



## Universal-cutter blue

15.12410

For carpets with foam back. 10 blades included.

## Spare blades for 15.12410

15.12580

Pack of 100 units



## Loop pile cutter "Black"

15.12441

For all textile coverings, except foam backing. Cuts from top to bottom. 10 blades included.

## Spare blades for 15.12441

15.12560

Pack of 100 units



## Loop pile cutter

15.12440

With guiding rail for woven carpets.

# Scissors



## Carpet shears 10" (25cm)

15.12690

Premium quality. Nickel blades, black varnished handle.

---



## Carpet shears 10" (25cm) for left-handers

15.12700

Premium quality. Nickel blades, black varnished handle.

---



## Carpet shears 12" (30cm)

15.12710

Premium quality. Nickel blades, black varnished handle.

---



## Nap shears 6" (15cm) angled

15.12720

Premium quality. Nickel blades, bent, plastic coated handle.



## Nap shears 7" (18cm) angled

15.12725

Premium quality. Nickel blades, bent, plastic coated handle.

---



## Binding shears 8" (20cm), angled

15.12715

Premium quality. Nickel blades, bent, plastic coated handle.

---



## Universal shears 8" (20cm)

15.12735

Stainless. „Solingen“ quality, stainless.

---



## Universal shears 10" (25cm)

15.12750

Stainless. „Solingen“ quality, stainless.



## Mixer RO-1400

15.12378

Powerful mixer with 1400 Watt and 2-speed gear unit.  
Powerful motor for demanding mixing jobs with loads up to 50 kg.  
With soft start which prevents uncontrolled spraying of the mixing materials.  
With ergonomic soft handle.

### Technical specifications:

Power: 1400 Watt, 230 Volt  
Rotation 1: 150 - 300 rpm  
Rotation 2: 300 - 650 rpm  
Collet: M14  
Weight: 8,00kg  
Max. mixing quantity: 50kg  
Max. mixing tool: 140mm



## Mortar mixing tool 140mm M 14

15.12393

Universal use for heavy and highly viscous compounds  
e.g. mortar, plaster, tile adhesive, lime, concrete, cement, screed, filler,  
epoxy etc.  
Till 50kg.



## Spindle mixing tool M 14

15.12399

Universal use for ductile and highly viscous compounds  
e.g. mortar, plaster, gypsum, lime, rendering, tile adhesive, filler etc.  
Till 50kg.



## Standard mixer 120mm M 14

15.12396

Ideal for mixing adhesives, sealing compounds, screed,  
bitumen coatings etc.  
Till 25kg.



## 2-wings mixing tool 120mm M 14

15.12385

Special mixing tool for liquid and thin viscous materials, adhesives,  
lacquer, paint, primer etc. Tool ensures fast and homogeneous mixing  
without uncontrolled spraying. Till 50kg.



## Standard mixer 120mm SW 10

15.12380

Universal mixing tool for drilling machines, for liquid and thin  
viscous materials.  
Collet: SW 10 (SW=wrench size)



## Spindle mixing 120mm SW 10

15.12391

Universal mixing tool for drilling machines, for viscous and ductile  
materials e.g. tile adhesive, mortar, plaster, screed etc.  
Mixing characteristic: from the bottom up.  
Collet: SW 10 (SW=wrench size)

# Mixers and mixing rods



## Mixer holder RO-30

15.12365

New development from ROLL

Flexible and universally usable holder for attaching hand mixers to standard 30 liter mixing buckets.

- time-saving
- back-friendly
- universally adjustable for different hand mixer holders, mixer lengths and bucket diameters (35 - 39 cm)
- compatible with mixer RO-1400

*Delivery without hand mixer and mixing bucket.*



## Mixing station

15.12355

With this compact mixing station, up to 75 kg of product can be mixed quickly and efficiently.

Easy and safe transport thanks to the well-balanced and multi-adjustable chassis.

Dust-free mix with the optional hose holder to your vacuum cleaner.

- Included in delivery:
- chassis for the mixing bucket
  - 75 liters mixing bucket
  - holder for the mixer



## Hose holder

15.12356

For dust-free mixing with the mixing station and your vacuum cleaner.



## Turbo mixer M16/M14

15.12357

Specially developed for mixing large quantities of material. The turbine effect ensures that no lumps arise.



## Extension for mixer RO-1400

34.00550

Length 50mm, M14 internal / external thread.



# Anti slipping grip tapes



## ROLL Anti slipping grip tape

Premium, self adhesive non-slip grip tape, very durable, with excellent characteristics. It can be applied onto most surfaces to provide anti slip protection and safety standards e.g. onto stairs, entrances, ramps, public areas, boats, sanitary areas, trucks and buses.

For outdoor application we recommend to use edge sealer 14.11173.

Black	50mm x 18m	14.11160
Transparent	50mm x 18m	14.11161
White	50mm x 18m	14.11162
Red	50mm x 18m	14.11163
Green	50mm x 18m	14.11164
Grey	50mm x 18m	14.11165
Fluorescent	50mm x 18m (luminous)	14.11166
Blue	50mm x 18m	14.11167
Brown	50mm x 18m	14.11168
Grey	50mm x 18m (aqua safe, quality for bare foot areas)	14.11169
Neon yellow	50mm x 18m	14.11171
Safety color	50mm x 18m (black/yellow)	14.11172
Grey, coarse	50mm x 18m (aqua safe, quality for bare foot areas)	14.11174
Transparent	50mm x 18m (aqua safe, quality for bare foot areas)	14.11175
Black	14mm x 18m (aqua safe, quality for bare foot areas)	14.11200
Grey	14mm x 18m (aqua safe, quality for bare foot areas)	14.11201
Beige	14mm x 18m (aqua safe, quality for bare foot areas)	14.11202
Black	28mm x 18m (aqua safe, quality for bare foot areas)	14.11205
Grey	28mm x 18m (aqua safe, quality for bare foot areas)	14.11206
Safety color	28mm x 18m (black/yellow)	14.11207

Further widths and sizes upon request.



## Edge sealer

14.11173

For anti slipping grip tape, for outdoor applications. Based on PVC, tubes of 50g.



## Double-sided adhesive tape 50mmx50m

14.12240

Pack of 24 rolls.

### Technical specifications:

Carrier system: special fabric  
 Pressure-sensitive adhesive: hot-melt adhesive made of synthetic rubber  
 Protective cover: silicone paper, yellow  
 Thickness (without cover): 0.22 - 0.24 mm  
 Peel resistance:  $\geq 30$  N / 25 mm (DIN EN 1939)\*  
 Shear resistance: 1000 g / 625 mm<sup>2</sup> (DIN EN 1943)\*  
 Recommended working temperature: +10° C to +30° C  
 Temperature resistance: -30° C to +80° C  
 Condensation resistance: very high  
 Resistance to aging: limited  
 Plasticizer resistance: limited



## Adhesive injection

15.12330

With bayonet nut connector and 2 replaceable nozzles.

# Assembly accessories



**Spray adhesive** Box of 12 units of 500ml each

18.12960

**Spray adhesive** Single can

18.12961

Universal use in aerosols, for permanent and temporary adhesion. For paper, carton, wood, thin veneers, cork, leather, textiles, felt, foam, styrofoam, rubber etc. (except PVC and polyethylene). Temperature range: from -20 to +65°C



**Polymer assembly adhesive** Box of 12 units of 470g each

18.12987

**Polymer assembly adhesive** Cartridge

18.12988

Ready-made 1-component adhesive, solvent-free. Very fast curing and extreme strength adhesion, easy to press. Can be ground and varnished after curing.

Suitable for all kind of building materials: base boards, door cases, wood, metal and stone, hard PVC.

Heat resistant till +110°C, water proof according to DIN EN 204 - D4. Recommended for undrilled metal profiles because of flexible curing.



**Cartridge pistol „Profi“**

18.12994

Professional pistol, for cartridges and sealing compounds in tubes.



**Joint connectors**

For renovating cracks in screed. In conjunction with 2-components adhesive.

Pack of 1000 units

18.12952

Pack of 100 units

18.12953



**2-Components adhesive**

18.12950

Consists of adhesive (1000g) and hardener (30g).

For fixing grippers and for renovating cracks in screed. For all sub-floors. Setting time approx. 15min.



**Steel nails blank 1,5 mm**

Pack of 1000 units  
TEC-steel nails

20 mm

21.12030

25 mm

21.12040

30 mm

21.12050

35 mm

21.12060

45 mm

21.12080

**Steel nails zinc plated 1,5 mm**

Pack of 1000 units  
TEC-steel nails

20 mm

21.12090

25 mm

21.12100

30 mm

21.12110

35 mm

21.12120

45 mm

21.12125



## Leather Knee Pads

15.11707

Knee pads with a robust synthetic leather surface and soft neoprene padding. Very comfortable because of the wide strap which is fixed below the hollow of the knee. Dimensions: 22 x 18 x 7cm



## Knee pads - Ergo

15.11720

EN 14404 certified

## Replacement belts

15.11721

For knee pad Ergo



## Knee pads Wohlpro

15.11678

Medical knee pad, recommended from professional organisation.

## Replacement belts

15.11679

For knee pads Wohlpro



## Pocketable knee pads

15.11715

For dungarees. Premium quality of cellular rubber. Very durable and elastic. Due to the cuttings it is very comfortable to use. Paired.

Per pad 75g, dimensions: 22,5 x 16 x 12mm



## Dusk mask with comfort nose seal, FFP2

22.12966

Classic model with ActivForm®, DuraMesh®-structure and comfort nose seal. The ActivForm® seal automatically adjusts to different face types and their movements. Due to DuraMesh®-structure these masks are strong and durable, reducing consumption. With additional comfort nose seal for comfortable breathing (air keeps cooler). According to EN149:2001, FFP2 NR D: against toxic dusts, mists and fumes based on water and oil.

Pack of 3 units



## Dusk mask with comfort nose seal, FFP3

22.12967

Mask with ActivForm®, DuraMesh®-structure and comfort nose seal. The ActivForm® seal automatically adjusts to different face types and their movements. Due to DuraMesh®-structure these masks are strong and durable, reducing consumption. With additional comfort nose seal for comfortable breathing (air keeps cooler) and washable, contoured full face seal. According to: EN149:2001, FFP3 R D: against all dusts, mists and fumes based on water and oil.

Packed per unit



## Dusk mask FFP2

22.12968

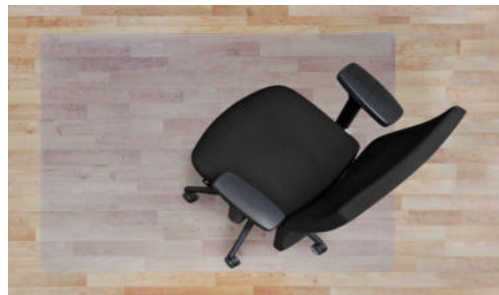
- Tested and CE certified according to EN 149: 2001 + A1: 2009
- Special ultra-light design for maximum comfort
- Flexible and ergonomic
- Separately packaged
- Filtration of droplets when inhaled
- This product meets the requirements of the PPE regulation (EU) 2016/425
- Suitable for internal and external protection

Pack of 10 units

# Chairmats

## ROLL polycarbonate chairmats

ROLL chairmats are of Polycarbonate and protect all kinds of floor coverings. Features: odourless and totally emission-free, free of PVC or vinyl, 100 % recyclable, UV-stabilized, ideal for allergy sufferer, extremely strong, suitable for floor heating system, recommended for chair castors.



### Roll polycarbonate chairmats smooth

With non-slip coating at the bottom. For parquet, PVC, lino and all smooth surfaces, also thin carpets.

100% Polycarbonate without recycling. Thickness 2mm.

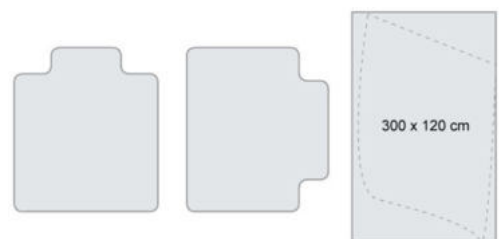
925x1200mm	12.11450
1000x1200mm	12.11451
1150x1200mm	12.11452
1500x1200mm	12.11453
1850x1200mm	12.11454
2000x1200mm	12.11455
3000x1200mm	12.11456
Round Ø 1000mm	12.11457



### Roll polycarbonate chairmats with spikes

For carpets. 100% Polycarbonate without recycling. Thickness 2,75mm.

930x1200mm	12.11500
1000x1200mm	12.11505
1150x1200mm	12.11510
1500x1200mm	12.11515
1850x1200mm	12.11520
2000x1200mm	12.11525
3000x1200mm	12.11530



All sizes are available with cut-out, alongside or broadside. Within sizes 3000x1200mm every form is available according to drawing.

### Cut-out per chairmat

10.00004

**Special measurements** (on estimate) and shapes on request!





# Index

<b>A</b>			
Abrasives for parquet sanding machines	32	62	63
Abrasives for single disc machines	27	60	61
Accessories for parquet sanding machines	33		
Accessories for single disc machines	28		
Adhesive	72		
Adhesive injection	71		
Adhesive spatula	54		
Adhesive tape	71		
Air cleaner	38		
Angle grinders	16	17	
Anti slipping grip tape	71		
Assembly adhesive	72		
<b>B</b>			
Blades for Stripper	10		
Blades for Stripper	65		
Broom	46		
Brush for single disc machine	29		
Bullystripper	10		
<b>C</b>			
Cable drum	28		
Carbide discs	25		
CargoMaster	9		
Carpet awl	49		
Carpet clamp	49		
Carpet installation tools	48	49	
Chairmats	74		
Cold welding liquid	47		
Copper tape	53		
Cup wheels	18	19	
Current limiter	28		
Cutter knife	66		
<b>D</b>			
Diamond cup wheels	18	19	
Diamond discs	14	15	
Diamond discs	24		
Diamond pads	64		
Discs for floor grinding machines	14	15	
Discs for single disc machines	24	25	26
Dolphin knife	66		
Dust masks	73		
Dust separator	37		
Dust vacuum system	23		
<b>E</b>			
Easy 5000	42		
E-Cut	20		
Edge sander	31		
Edge trimmer	40		
Eraser	45		
Extension cable	28		
<b>F</b>			
Fiberpad	61		
Floor grinding machines	12	13	
Floor scribe	41		
Flooring cutter	51		
<b>G</b>			
Grinding block	39		
Grinding machines	12	13	
Grip tape	71		
Grooving machine	42		
<b>H</b>			
Hammer	50		
Hand grinding machines	16	17	
Hand groover	40	41	
Height scribe	41		
Hollow punch	45		
Hoobnailed shoes	52		
Hooked blades	65		
Hot air tool	43		
Hydromette	57		
<b>I</b>			
Industrial vacuum cleaners	34	35	36
Installers knife	66		
<b>J</b>			
Joint connectors	72		
<b>K</b>			
Knee kicker	48		
Knee pads	73		
Knife holder	66		
Knives	66		
Kombi stretcher	48		
<b>L</b>			
Laser distance meter	58		
Leister	43	44	
Lino cutter	42		
Lino roller	46		
Lino strip cutter	40		
Linoleum and PVC tools	43	44	45
Liquid tank for single disc machine	29		
Loop pile cutter	67		
<b>M</b>			
Measuring instruments	57	58	59
Mini sander	20		
Minifloor	43		
Mitre cut shears	67		
Mixer	69		
Mixer holder	70		
Mixing station	70		
Mixing tools	69		
Moisture measuring instruments	57	58	
Mozart blades	65		
<b>N</b>			
Nails	72		
Notched inserts	55		
<b>P</b>			
Pads	27		
Parquet installation tools	50	51	
Parquet sanding machines	30	31	
Parquet saw	9		
PCD cup wheels	18	19	
PCD discs	14	15	
Pin leveller	53		
Polishing pads	64		
Polycarbonate chair mats	74		
Pre-cutter	6		
Pressure hammer	46		
Pressure roller	44	46	
<b>Q</b>			
Quarter moon knife	45		
<b>R</b>			
Ramp	6		
RO-1.1	2	3	
RO-125	17		
RO-180	17		
RO-1800	22	23	
RO-2	4	5	
RO-2000	23		
RO-2200	22		
RO-250	13		
RO-3	7		
RO-300	13		
RO-4	9		
RO-400	13		
RO-5	8		
Roller	56		
ROLL-STRIPPER	2	-	8
ROMO-125	17		
ROMO-180	17		
Rubber hammer	50		
Ruler	59		
<b>S</b>			
Scissors	68		
Scrapers	39		
Scriber	41		
Seam roller	49		
Seam squeezer	49		
Seaming tape	48		
Single disc machines	21	22	23
Smoothing disc	26		
Spatula	54		
Spike shoes	52		
Spiked roller	52		
Spray adhesive	72		
Spreading knife	53		
Stairclimber	9		
Steel angle	59		
Stone grinding disc	26		
Stripmaster	6		
Stripper	2	-	8
Stripper Accessories	6		
Stripper Tools	3	4	5
Super Pads	27		
Superfinishing pads	61		
Surface hardness tester	59		
<b>T</b>			
Tapping block	50		
Trapezium blades	65		
Trimming knife	45		
Trowel	52		
<b>V</b>			
Vacuum cleaners	34	35	36
<b>W</b>			
Welding car	43		
Welding machine	43		
Welding nozzles	44		
Wet and dry vacuum cleaner	36		
Wood sanding disc	26		
Woody	31		
Wool pad	61		



Visit us on social media



Albstrasse 12  
72820 Sonnenbühl  
Germany

Phone +49 (0) 7128/9280-0  
Fax +49 (0) 7128/9280-11  
Email [info@roll-gmbh.de](mailto:info@roll-gmbh.de)

[www.roll-gmbh.de](http://www.roll-gmbh.de)