

# FLOORING TECHNOLOGY

## PROFILES

# ROLL GmbH | Company profile

**Roll GmbH** is German leading manufacturer of machines for the removal of floor coverings, machines for surface preparation and machines and tools for the installation of all kind of floor coverings. Furthermore a large assortment of different flooring profiles is offered for a wide range of applications.

Roll GmbH also is the Roll family and their dedicated team which works with passion for the flooring technology for more than 35 years and sets mile stones in the flooring industry. In addition to stripper and grinding machines, numerous hand tools and flooring profiles for the floor covering market were developed and offered.

*„We not only want to satisfy our customers, we want to fascinate them“* this is what the siblings Beatrice, Stephan and André Roll clearly want to express. This works best with products which convince and furthermore with a remarkable service, these two features make the Roll GmbH successfully all over the world.

We would also be happy to provide you with personal advice on site.  
You can find your contact person at: <https://www.roll-gmbh.de/kontakt.html>



# Categories

## Profiles with punching

Aluminum and stainless steel all-purpose edge trims and expansion joint profiles

---

02 - 05

## System profiles

System profiles for LVT, laminate, parquet, cover strips, edge trims, adapting profiles

---

06 - 11

## Edge trims

U-profiles, edge trims for laminate, parquet, resilient and textile floor coverings

---

12 - 21

## Cover strips

All-purpose cover strips

---

22 - 29

## Angle edges

Universal angle edges

---

30 - 32

## Stair nosings

Stair nosings fluted, stair nosings with anti-slip insert

---

33 - 45

## Carpet grippers

---

46

## Metal angles

---

47

## Anti slip grip tapes

---

48

## Sales aids

---

49 - 50

## General

---

## Legend for the sample case

# Profiles with punching



## Aluminum L-profile with punching

All-purpose edge trim for different floor coverings with cut-outs for laying in screed or adhesive.

100  
to  
111

Designation	Color	Execution	Item number	Packing unit
Aluminum edge trim 2mm	Aluminum nature	punched	11.15004	10 x 250 cm
Aluminum edge trim 2,5mm	Aluminum nature	punched	11.15006	10 x 270 cm
Aluminum edge trim 3mm	Aluminum nature	punched	11.15005	10 x 270 cm
Aluminum edge trim 4,5mm	Aluminum nature	punched	11.15010	10 x 270 cm
Aluminum edge trim 6mm	Aluminum nature	punched	11.15015	10 x 270 cm
Aluminum edge trim 8mm	Aluminum nature	punched	11.15020	10 x 270 cm
Aluminum edge trim 10mm	Aluminum nature	punched	11.15025	10 x 270 cm
Aluminum edge trim 11mm	Aluminum nature	punched	11.15026	10 x 270 cm
Aluminum edge trim 12,5mm	Aluminum nature	punched	11.15030	10 x 250 cm
Aluminum edge trim 15mm	Aluminum nature	punched	11.15035	10 x 270 cm
Aluminum edge trim 16mm	Aluminum nature	punched	11.15036	10 x 270 cm
Aluminum edge trim 20mm	Aluminum nature	punched	11.15045	10 x 250 cm
Aluminum edge trim 22mm	Aluminum nature	punched	11.15050	10 x 250 cm

! Profiles with punched bending radius on request!  
The profile can be adapted to rounded edge contours of floor coverings thanks to the radius punching.

SHOP NOW



# Profiles with punching



## Stainless steel L-profile with punching

All-purpose edge trim for different floor coverings with cut-outs for laying in screed or adhesive.

100  
to  
109

Designation	Color	Execution	Item number	Packing unit
Stainless steel edge trim 2mm	Stainless steel	punched	11.15114	10 bars*
Stainless steel edge trim 3mm	Stainless steel	punched	11.15115	10 bars*
Stainless steel edge trim 4,5mm	Stainless steel	punched	11.15120	10 bars*
Stainless steel edge trim 6mm	Stainless steel	punched	11.15125	10 bars*
Stainless steel edge trim 8mm	Stainless steel	punched	11.15130	10 bars*
Stainless steel edge trim 10mm	Stainless steel	punched	11.15135	10 bars*
Stainless steel edge trim 11mm	Stainless steel	punched	11.15136	10 bars*
Stainless steel edge trim 12,5mm	Stainless steel	punched	11.15140	10 bars*
Stainless steel edge trim 15mm	Stainless steel	punched	11.15145	10 bars*
Stainless steel edge trim 20mm	Stainless steel	punched	11.15146	10 bars*

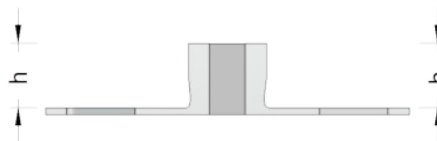
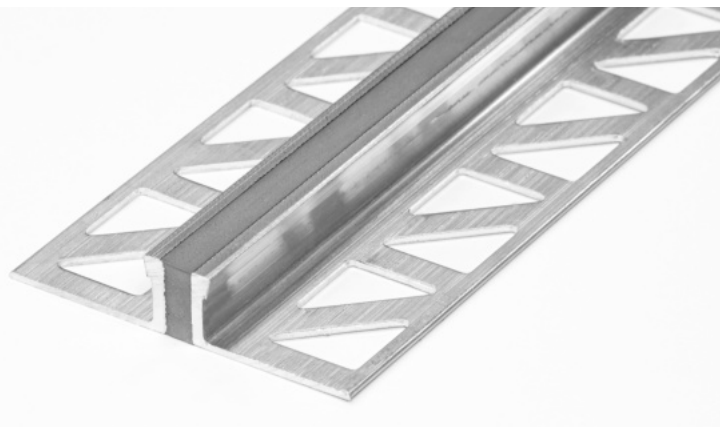
\* 250 cm or 270 cm length subject to availability

Brass profiles on request!

SHOP NOW



# Profiles with punching



## Aluminum expansion joint profile

All-purpose expansion joint profile with grey, black or beige insert, with 10mm visible edge, for linoleum, PVC, parquet and tiles. With cut-outs for laying in screed or adhesive.

112

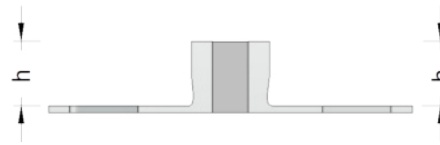
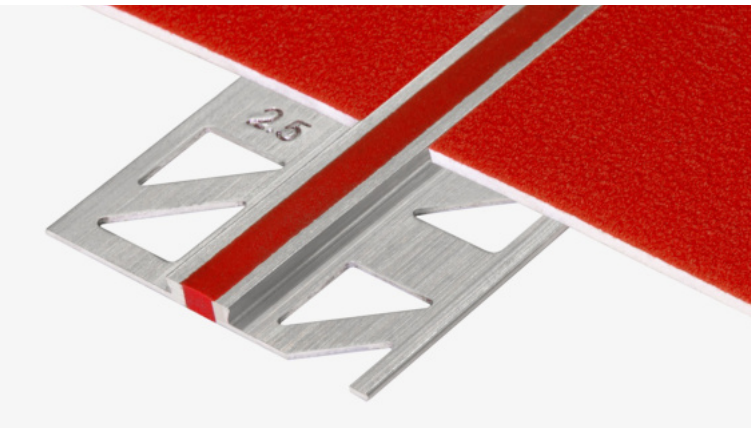
Designation	Color	Execution	Item number	Packing unit
Aluminum expansion joint profile 2,5mm - with grey insert	Aluminum nature	punched	11.15190	10 x 270 cm
Aluminum expansion joint profile 3mm - with grey insert	Aluminum nature	punched	11.15200	10 x 270 cm
Aluminum expansion joint profile 4,5mm - with grey insert	Aluminum nature	punched	11.15210	10 x 270 cm
Aluminum expansion joint profile 6mm - with grey insert	Aluminum nature	punched	11.15220	10 x 270 cm
Aluminum expansion joint profile 2,5mm - with black insert	Aluminum nature	punched	11.15191	10 x 270 cm
Aluminum expansion joint profile 3mm - with black insert	Aluminum nature	punched	11.15201	10 x 270 cm
Aluminum expansion joint profile 4,5mm - with black insert	Aluminum nature	punched	11.15211	10 x 270 cm
Aluminum expansion joint profile 6mm - with black insert	Aluminum nature	punched	11.15221	10 x 270 cm
Aluminum expansion joint profile 2,5mm - with beige insert	Aluminum nature	punched	11.15192	10 x 270 cm
Aluminum expansion joint profile 3mm - with beige insert	Aluminum nature	punched	11.15202	10 x 270 cm
Aluminum expansion joint profile 4,5mm - with beige insert	Aluminum nature	punched	11.15212	10 x 270 cm

Other heights on request!

SHOP NOW



# Profiles with punching



## Expansion joint profile with colored insert

All-purpose expansion joint profile with colored insert, with 10mm visible edge, for linoleum, PVC, parquet and tiles. With cut-outs for laying in screed or adhesive.

112

Designation	Color	Execution	Item number	Packing unit
Aluminum expansion joint profile 2,5mm - Inlay in your desired color	Aluminum nature	punched	11.15193	10 x 270 cm
Aluminum expansion joint profile 3mm - Inlay in your desired color	Aluminum nature	punched	11.15203	10 x 270 cm
Aluminum expansion joint profile 4,5mm - Inlay in your desired color	Aluminum nature	punched	11.15213	10 x 270 cm

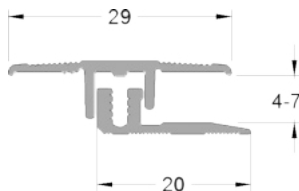
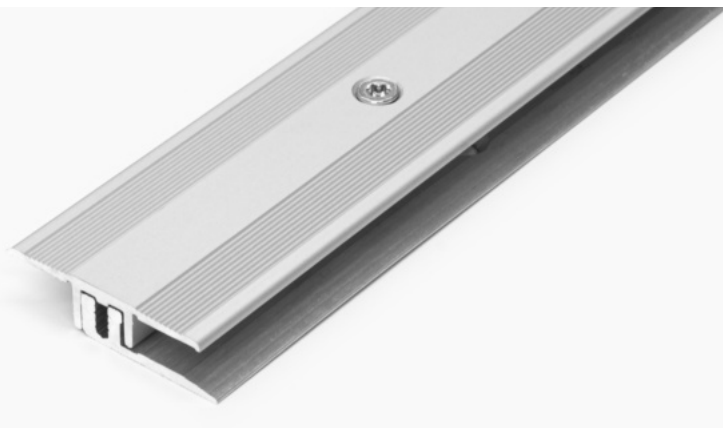
\* Observe minimum quantities

\*\* Other heights on request!

SHOP NOW



# System profiles for LVT



## Expansion joint profile for LVT floorings

Screwable system profile with a low base profile of 4mm with a filigree shape to cover expansion joints and for beautifully shaped transitions between floor coverings of the same height. For laying LVT floorings and laminate up to 7 mm height. Available as individual rods or packed in a set.

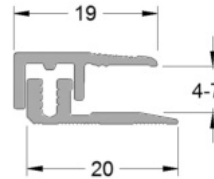
113  
plus  
116

Designation	Color	Execution	Item number	Packing unit
Set of expansion joint profile and 4mm base profile	silver matt	drilled	11.19100	5 x 270 cm
Set of expansion joint profile and 4mm base profile	sand matt	drilled	11.19101	5 x 270 cm
Set of expansion joint profile and 4mm base profile	stainless steel matt	drilled	11.19102	5 x 270 cm
Set of expansion joint profile and 4mm base profile	silver matt	drilled	11.20100	6 x 90 cm
Set of expansion joint profile and 4mm base profile	sand matt	drilled	11.20101	6 x 90 cm
Set of expansion joint profile and 4mm base profile	stainless steel matt	drilled	11.20102	6 x 90 cm
Base profile 4mm	nature	drilled	11.19004	10 x 270 cm
Cover expansion joint profile	silver matt	drilled	11.19010	10 x 270 cm
Cover expansion joint profile	sand matt	drilled	11.19011	10 x 270 cm
Cover expansion joint profile	stainless steel matt	drilled	11.19012	10 x 270 cm





# System profiles for LVT



## Edge trim for LVT floorings

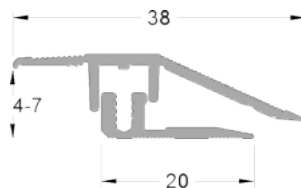
Screwable system profile with a low base profile of 4mm with a filigree shape to cover expansion joints and for beautifully shaped end of the floor coverings. For laying LVT floorings and laminate up to 7 mm height. Available as individual rods or packed in a set.

**114**  
plus  
**116**

Designation	Color	Execution	Item number	Packing unit
Set of edge trim and 4mm base profile	silver matt	drilled	11.19200	5 x 270 cm
Set of edge trim and 4mm base profile	sand matt	drilled	11.19201	5 x 270 cm
Set of edge trim and 4mm base profile	stainless steel matt	drilled	11.19202	5 x 270 cm
Set of edge trim and 4mm base profile	silver matt	drilled	11.20200	6 x 90 cm
Set of edge trim and 4mm base profile	sand matt	drilled	11.20201	6 x 90 cm
Set of edge trim and 4mm base profile	stainless steel matt	drilled	11.20202	6 x 90 cm
Base profile	nature	drilled	11.19004	10 x 270 cm
Cover edge trim	silver matt	drilled	11.19020	10 x 270 cm
Cover edge trim	sand matt	drilled	11.19021	10 x 270 cm
Cover edge trim	stainless steel matt	drilled	11.19022	10 x 270 cm



# System profiles for LVT



## Adapting profile for LVT floorings

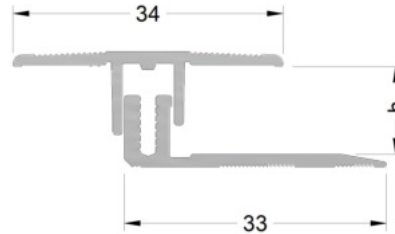
Screwable system profile with a low base profile of 4mm with a filigree shape to cover expansion joints and for beautifully shaped transitions between floor coverings of different height. For laying LVT floorings and laminate up to 7 mm height. Available as individual rods or packed in a set.

115  
plus  
116

Designation	Color	Execution	Item number	Packing unit
Set of adapting profile and 4mm base profile	silver matt	drilled	11.19300	5 x 270 cm
Set of adapting profile and 4mm base profile	sand matt	drilled	11.19301	5 x 270 cm
Set of adapting profile and 4mm base profile	stainless steel matt	drilled	11.19302	5 x 270 cm
Set of adapting profile and 4mm base profile	silver matt	drilled	11.20300	6 x 90 cm
Set of adapting profile and 4mm base profile	sand matt	drilled	11.20301	6 x 90 cm
Set of adapting profile and 4mm base profile	stainless steel matt	drilled	11.20302	6 x 90 cm
Base profile 4mm	nature	drilled	11.19004	10 x 270 cm
Cover adapting profile	silver matt	drilled	11.19030	10 x 270 cm
Cover adapting profile	sand matt	drilled	11.19031	10 x 270 cm
Cover adapting profile	stainless steel matt	drilled	11.19032	10 x 270 cm



# System profiles



## Expansion joint profile for parquet

Screwable system profile with a low base profile of 7mm with a filigree shape to cover expansion joints and for beautifully shaped transitions between floor coverings of the same height. For laying laminate and parquet up to 16mm height. Available as individual rods or packed in a set.

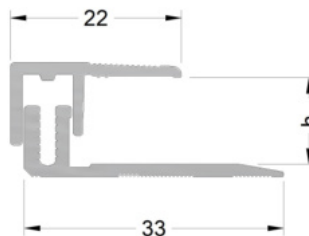
117  
plus  
120

Designation	Color	Execution	Item number	Packing unit
Set of expansion joint profile and 7mm base profile	silver matt	drilled	11.19400	5 x 270 cm
Set of expansion joint profile and 7mm base profile	sand matt	drilled	11.19401	5 x 270 cm
Set of expansion joint profile and 7mm base profile	stainless steel matt	drilled	11.19402	5 x 270 cm
Set of expansion joint profile and 7mm base profile	silver matt	drilled	11.20400	6 x 90 cm
Set of expansion joint profile and 7mm base profile	sand matt	drilled	11.20401	6 x 90 cm
Set of expansion joint profile and 7mm base profile	stainless steel matt	drilled	11.20402	6 x 90 cm
Base profile 7mm	nature	drilled	11.19007	10 x 270 cm
Cover expansion joint profile	silver matt	drilled	11.19040	10 x 270 cm
Cover expansion joint profile	sand matt	drilled	11.19041	10 x 270 cm
Cover expansion joint profile	stainless steel matt	drilled	11.19042	10 x 270 cm

SHOP NOW



# System profiles



## Edge trim for parquet

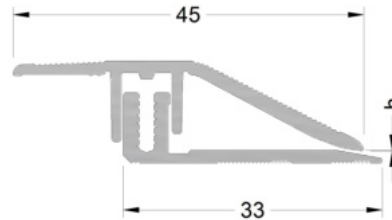
Screwable system profile with a low base profile of 7mm with a filigree shape to cover expansion joints and for beautifully shaped end of the floor coverings. For laying laminate and parquet up to 16mm height. Available as individual rods or packed in a set.

**118**  
plus  
**120**

Designation	Color	Execution	Item number	Packing unit
Set of edge trim profile and 7mm base profile	silver matt	drilled	11.19500	5 x 270 cm
Set of edge trim profile and 7mm base profile	sand matt	drilled	11.19501	5 x 270 cm
Set of edge trim profile and 7mm base profile	stainless steel matt	drilled	11.19502	5 x 270 cm
Set of edge trim profile and 7mm base profile	silver matt	drilled	11.20500	6 x 90 cm
Set of edge trim profile and 7mm base profile	sand matt	drilled	11.20501	6 x 90 cm
Set of edge trim profile and 7mm base profile	stainless steel matt	drilled	11.20502	6 x 90 cm
Base profile 7mm	nature	drilled	11.19007	10 x 270 cm
Cover edge trim profile	silver matt	drilled	11.19050	10 x 270 cm
Cover edge trim profile	sand matt	drilled	11.19051	10 x 270 cm
Cover edge trim profile	stainless steel matt	drilled	11.19052	10 x 270 cm



# System profiles



## Adapting profile for parquet

Screwable system profile with a low base profile of 7mm with a filigree shape to cover expansion joints and for beautifully shaped transitions between floor coverings of different height. For laying laminate and parquet up to 16mm height. Available as individual rods or packed in a set.

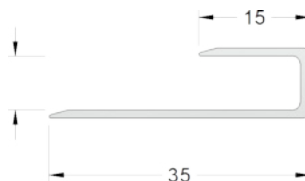
**119**  
plus  
**120**

Designation	Color	Execution	Item number	Packing unit
Set of adapting profile and 7mm base profile	silver matt	drilled	11.19600	5 x 270 cm
Set of adapting profile and 7mm base profile	sand matt	drilled	11.19601	5 x 270 cm
Set of adapting profile and 7mm base profile	stainless steel matt	drilled	11.19602	5 x 270 cm
Set of adapting profile and 7mm base profile	silver matt	drilled	11.20600	6 x 90 cm
Set of adapting profile and 7mm base profile	sand matt	drilled	11.20601	6 x 90 cm
Set of adapting profile and 7mm base profile	stainless steel matt	drilled	11.20602	6 x 90 cm
Base profile 7mm	nature	drilled	11.19007	10 x 270 cm
Cover adapting profile	silver matt	drilled	11.19060	10 x 270 cm
Cover adapting profile	sand matt	drilled	11.19061	10 x 270 cm
Cover adapting profile	stainless steel matt	drilled	11.19062	10 x 270 cm

SHOP NOW



# Edge trims



## Parquet edge trim (U-profile)

Edge trim to insert parquet and laminate, with high insertion depth allowing space for expansion.

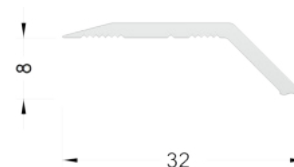
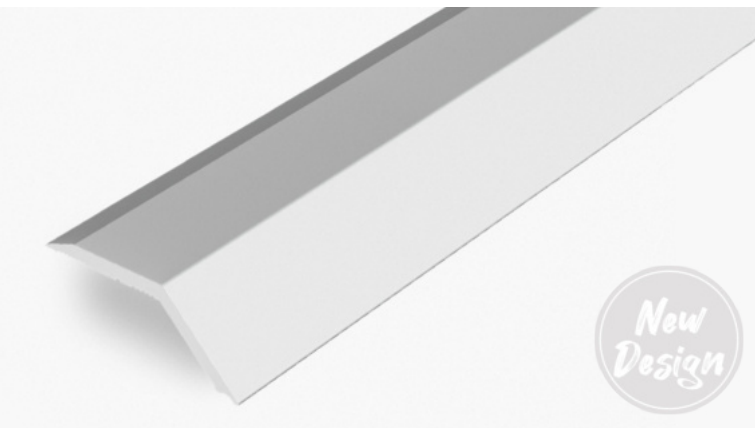
121  
to  
125

Designation	Color	Execution	Item number	Packing unit
Edge trim 7,2mm	silver matt	drilled	11.11695	10 x 270 cm
Edge trim 7,2mm	stainless steel matt	drilled	11.11696	10 x 270 cm
Edge trim 8,2mm	silver glossy	drilled	11.11700	10 x 270 cm
Edge trim 10,2mm	silver matt	drilled	11.11686	10 x 270 cm
Edge trim 10,2mm	stainless steel matt	drilled	11.11707	10 x 270 cm
Edge trim 14,2mm	silver matt	drilled	11.11736	10 x 270 cm
Edge trim 14,2mm	stainless steel matt	drilled	11.11726	10 x 270 cm
Edge trim 15,2mm	silver matt	drilled	11.11737	10 x 270 cm

SHOP NOW



# Edge trims



## Edge trim

Universal edge trim for parquet and laminate and ramp profile for floor coverings with different heights.

[NEW] smooth surface

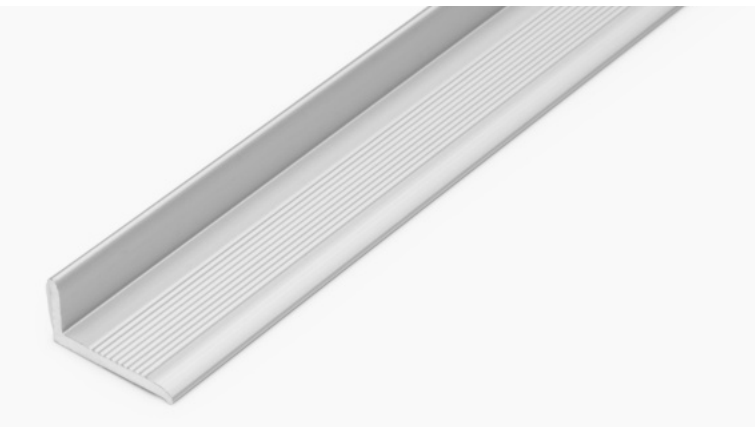
128 | 127

Designation	Color	Execution	Item number	Packing unit
Edge trim 3,5mm	silver matt	self-adhesive	11.10558	10 x 270 cm
Edge trim 8mm	silver matt	self-adhesive	11.11402	10 x 270 cm

SHOP NOW



# Edge trims



## Wall junction profile 20x10mm

165

Self-adhesive wall junction profile 20x10mm for ending the floor covering on adjacent terrace and balcony doors, floor-to-ceiling windows and walls.

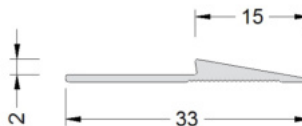
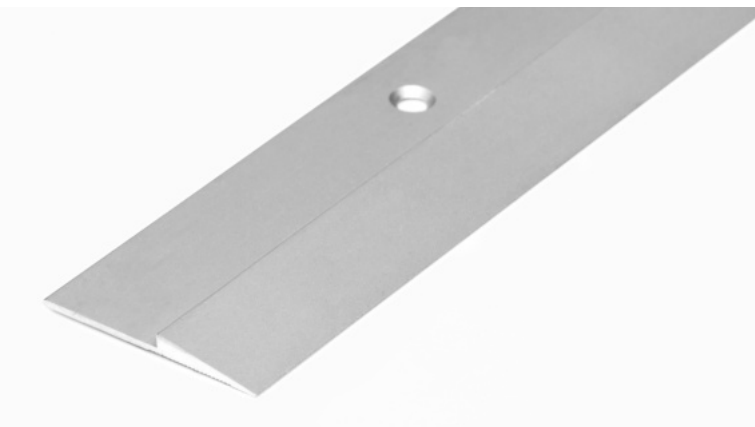
Designation	Color	Execution	Item number	Packing unit
Wall junction profile 20x10mm	silver matt	self-adhesive	11.10527	10 x 270 cm

SHOP NOW





# Edge trims



## Edge trim 2,0mm

Robust Edge Trim and ramp profile for thin floor coverings up to 2,0mm height.

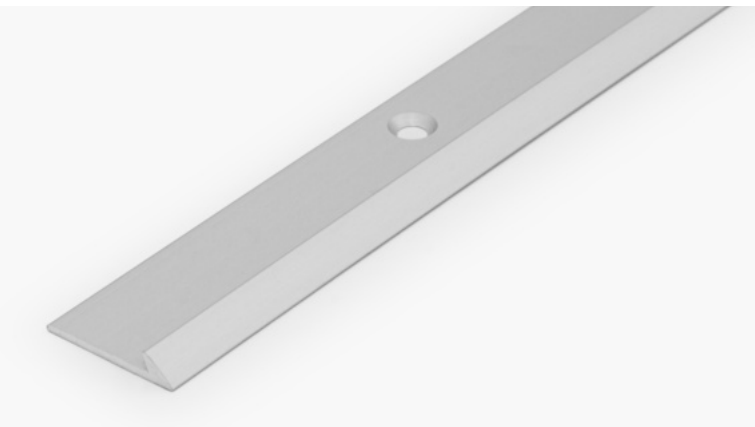
160

Designation	Color	Execution	Item number	Packing unit
Edge trim 2,0mm	silver glossy	drilled	11.10525	10 x 270 cm
Edge trim 2,0mm	silver matt	drilled	11.10526	10 x 270 cm

SHOP NOW



# Edge trims



## Edge trim 2,8mm

Robust Edge Trim for linoleum, PVC and cork floor coverings up to 2,8mm height.

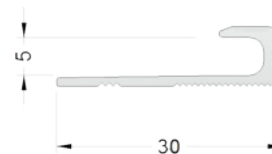
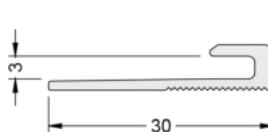
130

Designation	Color	Execution	Item number	Packing unit
Edge trim 2,8mm	silver matt	drilled	11.10352	10 x 270 cm
Edge trim 2,8mm	Brass	drilled	11.10350	10 x 270 cm

SHOP NOW



# Edge trims



## Base edge trim 3mm | 5mm

132 | 161

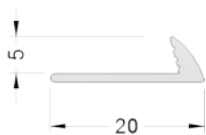
Base edge trim for coverings up to 3mm or 5mm, with insert.  
Can also be used as a base finish.

Designation	Color	Execution	Item number	Packing unit
Base edge trim 3mm	silver matt	drilled	11.11081	10 x 270 cm
Base edge trim 5mm	silver matt	drilled	11.11071	10 x 270 cm
Base edge trim 5mm	black matt	drilled	11.11072	10 x 270 cm

SHOP NOW



# Edge trims



## Edge trim 5mm

Robust Edge Trim for floor coverings up to 5mm height.

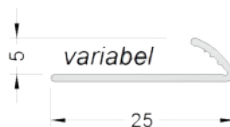
131

Designation	Color	Execution	Item number	Packing unit
Edge trim 5mm	silver matt	drilled	11.10362	10 x 270 cm
Edge trim 5mm	Brass	drilled	11.10360	10 x 270 cm

SHOP NOW



# Edge trims



## Edge trim 5mm

129

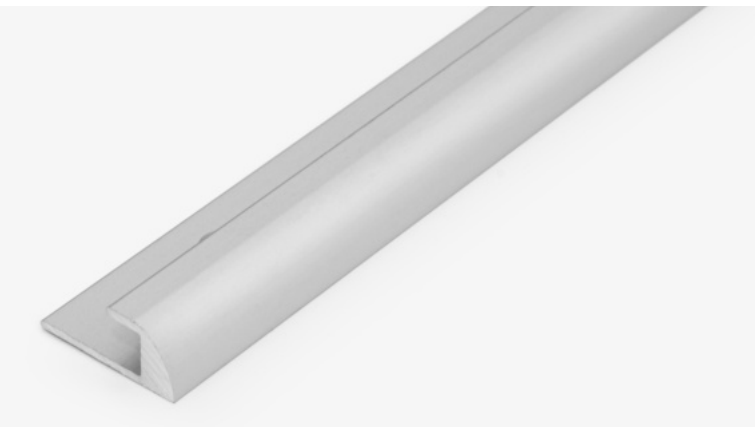
Adaptable edge trim for floor coverings up to 5mm high.  
The covering is permanently wedged in by pressing the end piece together.

Designation	Color	Execution	Item number	Packing unit
Edge trim 5mm	silver matt	drilled	11.10235	10 x 270 cm

SHOP NOW



# Edge trims



## Edge trim 6mm

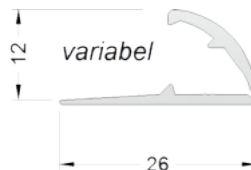
Robust Edge Trim for floor coverings up to 6mm height, with insertion.  
Can also be used as baseboard.

133

Designation	Color	Execution	Item number	Packing unit
Edge trim 6mm	silver glossy	drilled	11.10400	10 x 270 cm
Edge trim 6mm	silver matt	drilled	11.10401	10 x 270 cm

SHOP NOW





## Edge trim 12mm

134

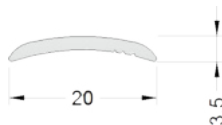
Universally applicable edge trim for carpets and other floor coverings up to 12mm high. The covering is permanently clamped in by pressing the edge together. Including fixing bar for easier laying of carpets.

Designation	Color	Execution	Item number	Packing unit
Edge trim 12mm	silver glossy	drilled	11.10240	10 x 270 cm

SHOP NOW



# Cover strips



## Cover strip 20mm

Profile covers two floorings.  
Robust profile 1,9mm thick, 3,5mm high.

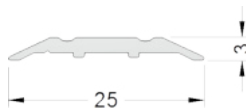
135

Designation	Color	Execution	Item number	Packing unit
Cover strip 20mm	silver matt	drilled	11.10461	10 x 270 cm
Cover strip 20mm	stainless steel matt	drilled	11.10463	10 x 270 cm

SHOP NOW







## Cover strip 25mm

Particularly flat and stable transition profile between floor coverings of the same height. With two decorative grooves. Only 3mm high and 25mm wide.

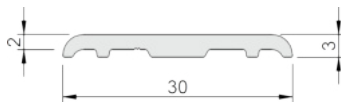
136

Designation	Color	Execution	Item number	Packing unit
Cover strip 25mm	silver matt	drilled	11.10482	10 x 270 cm
Cover strip 25mm	stainless steel matt	drilled	11.10483	10 x 270 cm
Cover strip 25mm	Brass	drilled	11.10510	10 x 270 cm
Cover strip 25mm	silver matt	self-adhesive	11.10484	10 x 270 cm
Cover strip 25mm	stainless steel matt	self-adhesive	11.10502	10 x 270 cm

SHOP NOW



# Cover strips



## Threshold profile 30x3mm

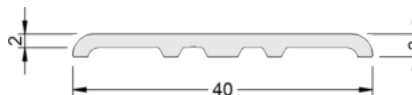
Particularly flat transition- and threshold profile 30x3mm. Ideal as a transition between floor coverings of the same height and filigree door threshold. With a flat surface and rounded edges. Only 3mm high and 30mm wide.

162

Designation	Color	Execution	Item number	Packing unit
Threshold profile 30x3mm	silver matt	drilled	11.10595	10 x 300 cm
Threshold profile 30x3mm	silver matt	undrilled	11.10596	10 x 300 cm
Threshold profile 30x3mm	silver matt	self-adhesive	11.10597	10 x 300 cm

SHOP NOW





## Threshold profile 40x3mm

163

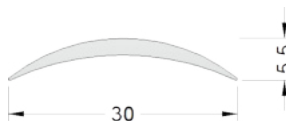
Particularly flat transition- and threshold profile 40x3mm. Ideal as a transition between floor coverings of the same height and filigree door threshold. With a flat surface and rounded edges. Only 3mm high and 40mm wide.

Designation	Color	Execution	Item number	Packing unit
Threshold profile 40x3mm	silver matt	drilled	11.10495	10 x 300 cm
Threshold profile 40x3mm	silver matt	undrilled	11.10496	10 x 300 cm
Threshold profile 40x3mm	silver matt	self-adhesive	11.10497	10 x 300 cm

SHOP NOW



# Cover strips



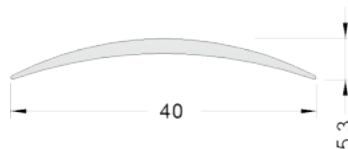
## Cover strip 30mm

Robust transition profile between floor coverings of the same height. Slightly curved to compensate slight unevennesses between the floor coverings.

137

Designation	Color	Execution	Item number	Packing unit
Cover strip 30mm	silver glossy	drilled	11.10473	10 x 270 cm
Cover strip 30mm	silver matt	drilled	11.10704	10 x 270 cm
Cover strip 30mm	sand matt	drilled	11.10707	10 x 270 cm
Cover strip 30mm	stainless steel matt	drilled	11.10723	10 x 270 cm
Cover strip 30mm	silver glossy	self-adhesive	11.10724	10 x 270 cm
Cover strip 30mm	silver matt	self-adhesive	11.10706	10 x 270 cm
Cover strip 30mm	sand matt	self-adhesive	11.10709	10 x 270 cm
Cover strip 30mm	stainless steel matt	self-adhesive	11.10722	10 x 270 cm
Cover strip 30mm	stainless steel	self-adhesive	11.10714	10 x 270 cm
Cover strip 30mm	stainless steel matt	self-adhesive	11.10713	10 x 270 cm
Cover strip 30mm	Brass	self-adhesive	11.10712	10 x 270 cm





## Cover strip 40mm

Robust transition profile between floor coverings of the same height.  
Slightly curved to compensate slight unevennesses between the floor coverings.

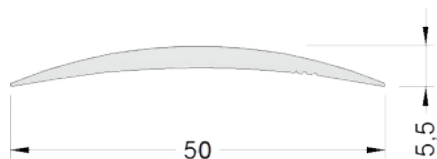
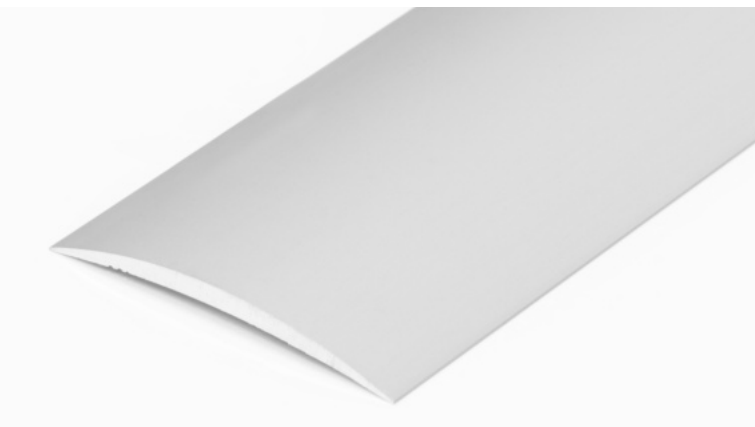
138

Designation	Color	Execution	Item number	Packing unit
Cover strip 40mm	silver glossy	drilled	11.10476	10 x 270 cm
Cover strip 40mm	silver matt	drilled	11.10720	10 x 270 cm
Cover strip 40mm	Brass	drilled	11.10410	10 x 270 cm
Cover strip 40mm	silver matt	self-adhesive	11.10719	10 x 270 cm
Cover strip 40mm	Bras	self-adhesive	11.10728	10 x 270 cm

SHOP NOW



# Cover strips



## Cover strip 50mm

Robust transition profile between floor coverings of the same height. Slightly curved to compensate slight unevennesses between the floor coverings.

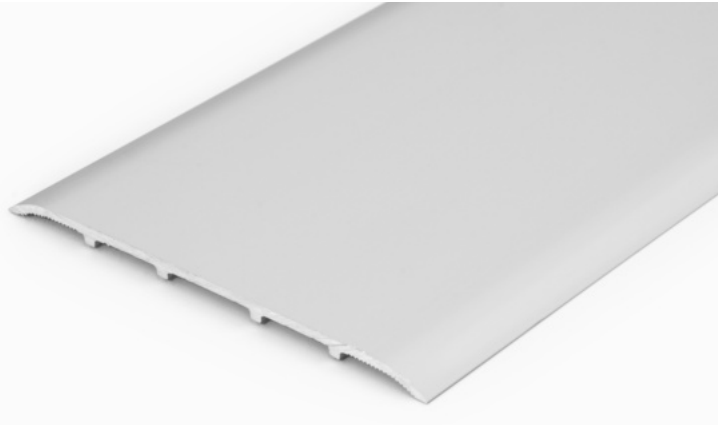
139

Designation	Color	Execution	Item number	Packing unit
Cover strip 50mm	silver matt	undrilled	11.10448	10 x 270 cm
Cover strip 50mm	stainless steel	drilled	11.10447	10 x 270 cm

SHOP NOW



# Cover strips



## Cover strip

Profile covers two floorings and expansion joints, can also be used as protection strip on walls. Robust profile 2,0mm thick, 4,0mm high with bridges, fork lift proof. Available in three widths: 60mm, 80mm, 100mm.

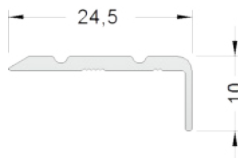
140  
to  
142

Designation	Color	Execution	Item number	Packing unit
Cover strip 60mm	silver matt	undrilled	11.10581	10 x 300 cm
Cover strip 80mm	silver glossy	undrilled	11.10585	10 x 300 cm
Cover strip 100mm	silver matt	undrilled	11.10591	10 x 300 cm

SHOP NOW



# Angle edges



## Angle edge 10x24,5mm

Robust angle edge profile can be used universally as edge protection or stair nosing profile. Ends to zero, fluted.

143

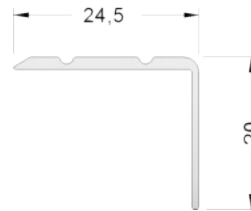
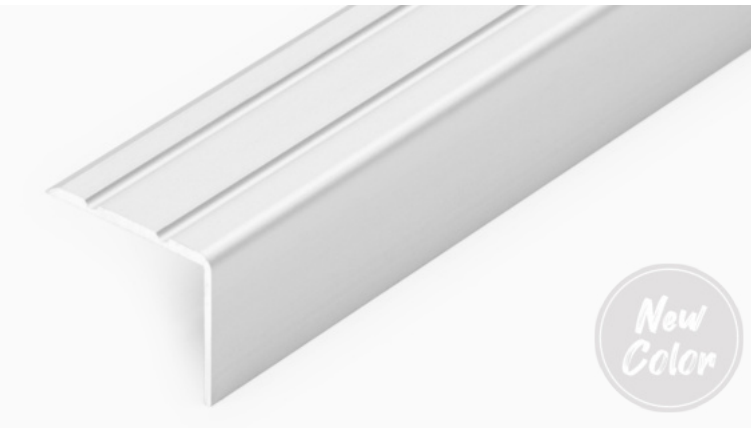
Designation	Color	Execution	Item number	Packing unit
Angle edge 10x24,5mm	silver matt	drilled	11.10647	10 x 270 cm
Angle edge 10x24,5mm	sand matt	drilled	11.10634	10 x 270 cm
Angle edge 10x24,5mm	stainless steel matt	drilled	11.10644	10 x 270 cm
Angle edge 10x24,5mm	silver matt	self-adhesive	11.10649	10 x 270 cm
Angle edge 10x24,5mm	sand matt	self-adhesive	11.10635	10 x 270 cm
Angle edge 10x24,5mm	stainless steel matt	self-adhesive	11.10646	10 x 270 cm

SHOP NOW





# Angle edges



## Angle edge 20x24,5mm

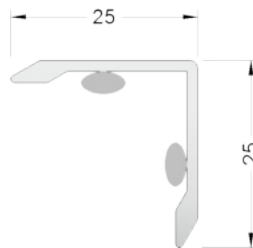
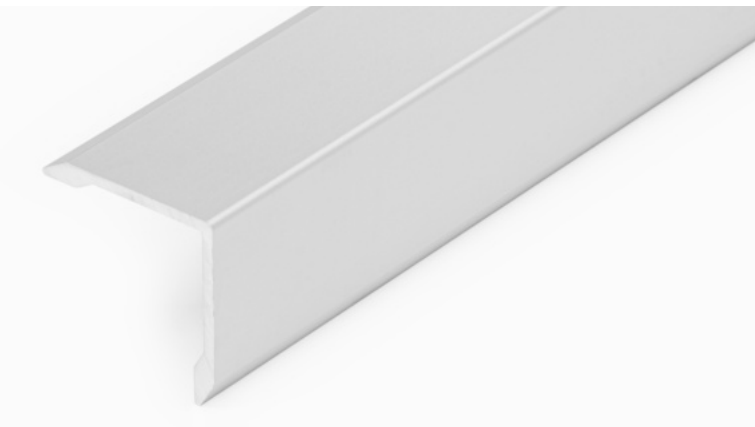
Robust angle edge profile can be used universally as edge protection or stair nosing profile. Ends to zero, fluted.

144

Designation	Color	Execution	Item number	Packing unit
Angle edge 20x24,5mm	silver matt	drilled	11.10657	10 x 270 cm
Angle edge 20x24,5mm	sand matt	drilled	11.10664	10 x 270 cm
Angle edge 20x24,5mm	stainless steel matt	drilled	11.10674	10 x 270 cm
Angle edge 20x24,5mm	silver matt	self-adhesive	11.10659	10 x 270 cm
Angle edge 20x24,5mm	sand matt	self-adhesive	11.10665	10 x 270 cm
Angle edge 20x24,5mm	stainless steel matt	self-adhesive	11.10676	10 x 270 cm
Angle edge 20x24,5mm	black matt	self-adhesive	11.10656	10 x 270 cm
Angle edge 20x20mm	Brass	drilled	11.10601	10 x 270 cm



# Angle edges



## Edge protection profile 25x25mm

Universally applicable corner and edge protection profile made of aluminum with rounded edges. Robust aluminum profile 1.5mm thick.

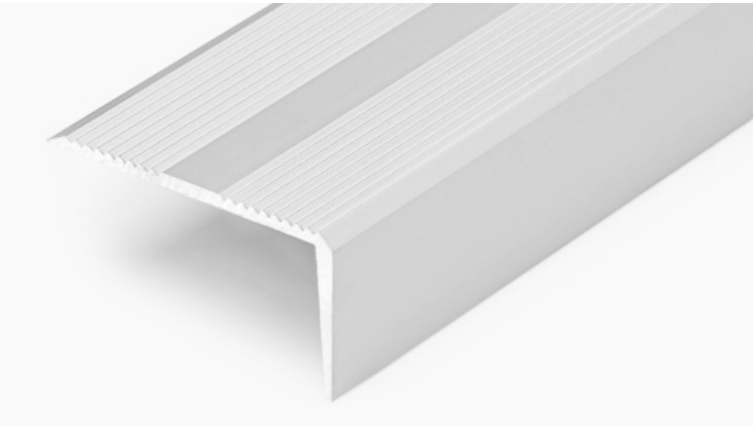
145

Designation	Color	Execution	Item number	Packing unit
Edge protection profile 25x25mm	silver matt	self-adhesive	11.10687	10 x 300 cm

SHOP NOW



# Stair nosings



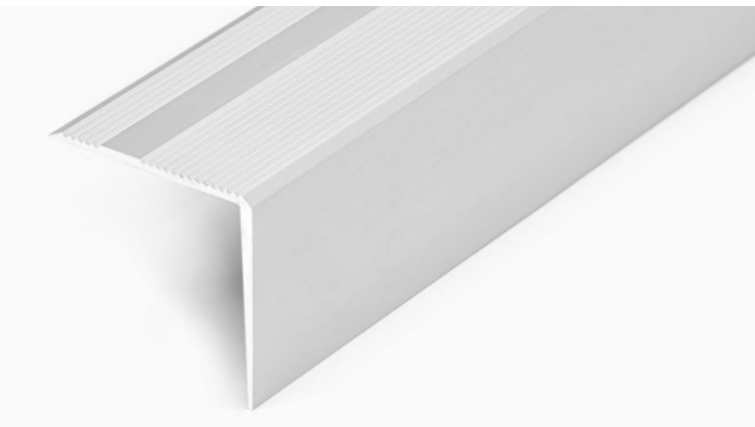
## Stair nosing 22x42mm

All-purpose stair nosing for any kinds of floor coverings, fluted, tapered, ends to zero.

146

Designation	Color	Execution	Item number	Packing unit
Stair nosing 22x42mm	silver matt	drilled	11.11054	10 x 300 cm
Stair nosing 22x42mm	nature	undrilled	11.11044	10 x 300 cm

# Stair nosings



## Stair nosing 40x40mm

Robust angle profile can be used universally as a stair nosing profile for laying on all floor coverings. With anti-slip grooves, ends to zero.

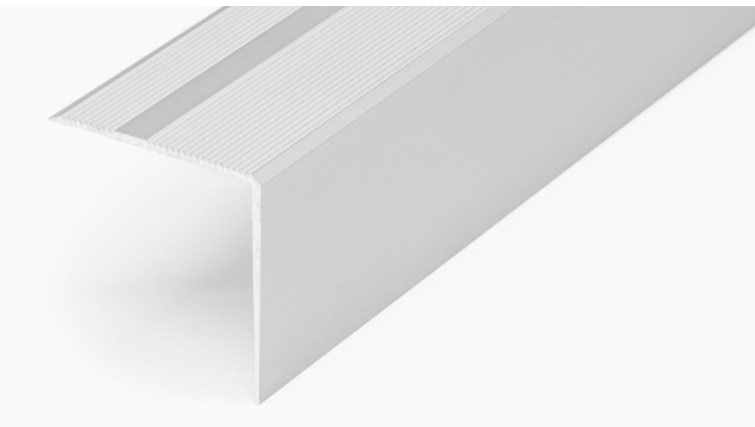
147

Designation	Color	Execution	Item number	Packing unit
Stair nosing 40x40mm	silver matt	drilled	11.10888	10 x 300 cm
Stair nosing 40x40mm	nature	undrilled	11.10887	10 x 300 cm

SHOP NOW



# Stair nosings



## Stair nosing 50x50mm

Robust angle profile can be used universally as a stair nosing profile for laying on all floor coverings. With anti-slip grooves, ends to zero.

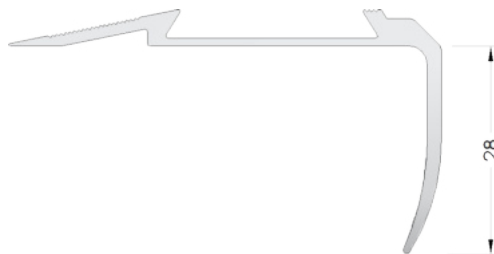
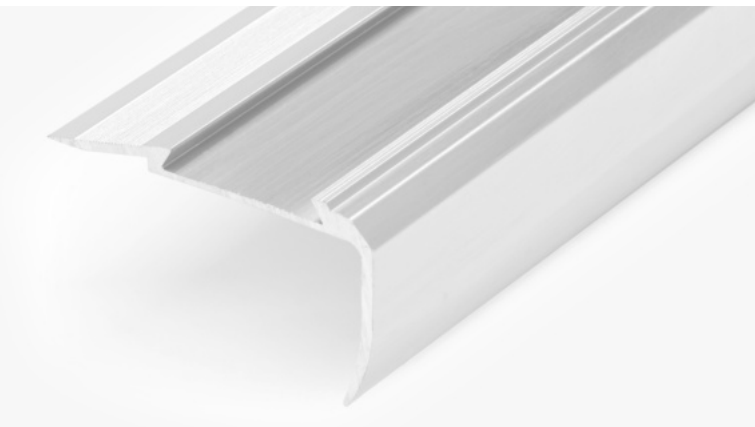
148

Designation	Color	Execution	Item number	Packing unit
Stair nosing 50x50mm	silver matt	drilled	11.10884	10 x 300 cm

SHOP NOW



# Stair nosings



## Stair nosing 28mm for PVC-insert

All-purpose stair nosing for any kinds of floor coverings, with recess for anti-slip insert. With rounded edge, ends to zero.

149

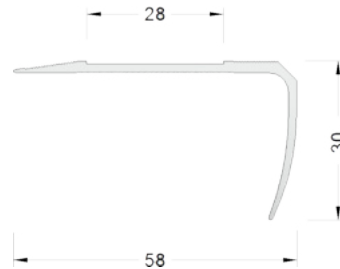
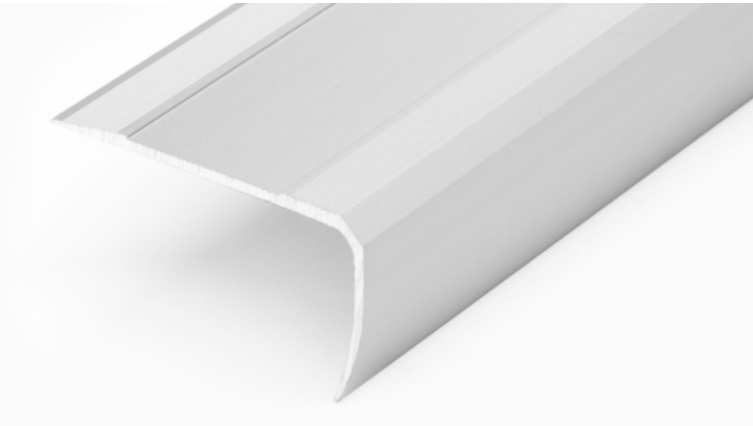
Designation	Color	Execution	Item number	Packing unit
Stair nosing 28mm with expiring ending	silver glossy	drilled	11.10845	10 x 300 cm
PVC-insert 25mm	black		11.10850	18 m
PVC-insert 25mm	grey		11.10851	18 m

Other colors on request!

SHOP NOW



# Stair nosings



## Stair nosing 30x58mm for anti-slip grip tapes

150

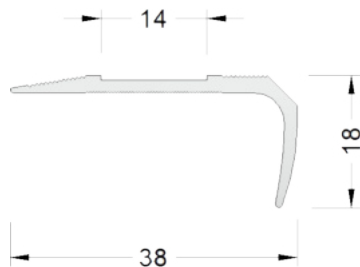
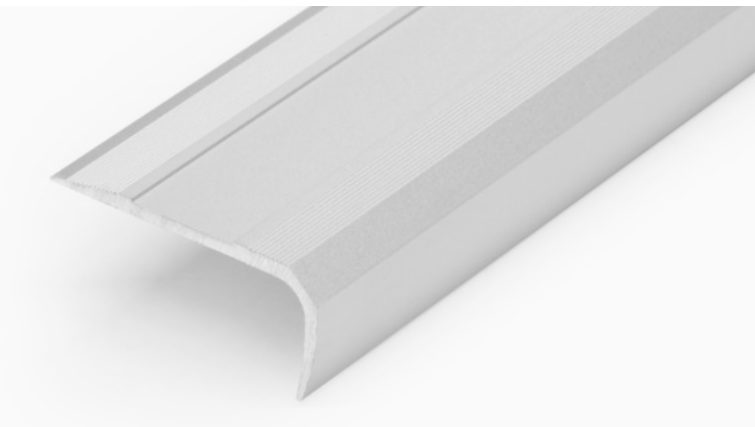
All-purpose stair nosing for any kinds of floor coverings, with recess for anti-slip insert. With rounded edge, ends to zero.

Designation	Color	Execution	Item number	Packing unit
Stair nosing 30x58mm	silver matt	drilled	11.10913	10 x 300 cm
Anti-slip grip tape 28mm	black	self-adhesive	14.11205	18 m
Anti-slip grip tape 28mm	grey	self-adhesive	14.11206	18 m
Anti-slip grip tape 28mm	black/yellow	self-adhesive	14.11207	18 m

SHOP NOW



# Stair nosings



## Stair nosing 18x38mm for anti-slip grip tapes

All-purpose stair nosing for any kinds of floor coverings, with recess for anti-slip insert. With rounded edge, ends to zero.

151

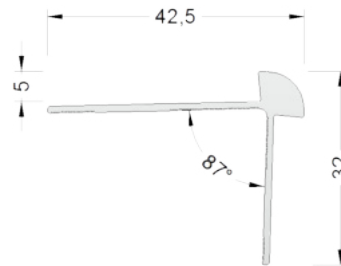
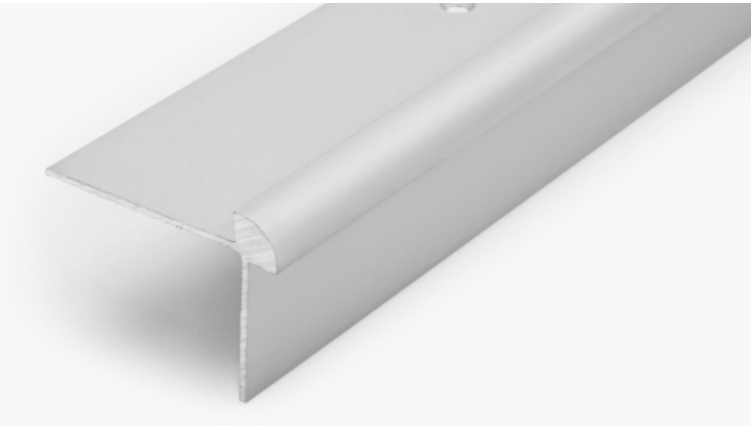
Designation	Color	Execution	Item number	Packing unit
Stair nosing 18x38mm	silver matt	drilled	11.10895	10 x 300 cm
Anti-slip grip tape 14mm	black	self-adhesive	14.11200	18 m
Anti-slip grip tape 14mm	grey	self-adhesive	14.11201	18 m

SHOP NOW





# Stair nosings



## Stair nosing 5mm for LVT floor coverings

152

Stair nosing for vinyl design floorings, linoleum, PVC and cork up to 5mm height. The floor covering is attached to the particularly filigree edge of the profile. Drilled on one site.

Designation	Color	Execution	Item number	Packing unit
Stair nosing 5mm	nature	drilled	11.11016	10 x 300 cm
Stair nosing 5mm	silver matt	drilled	11.11018	10 x 300 cm

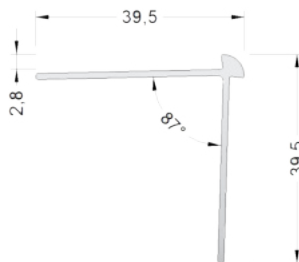
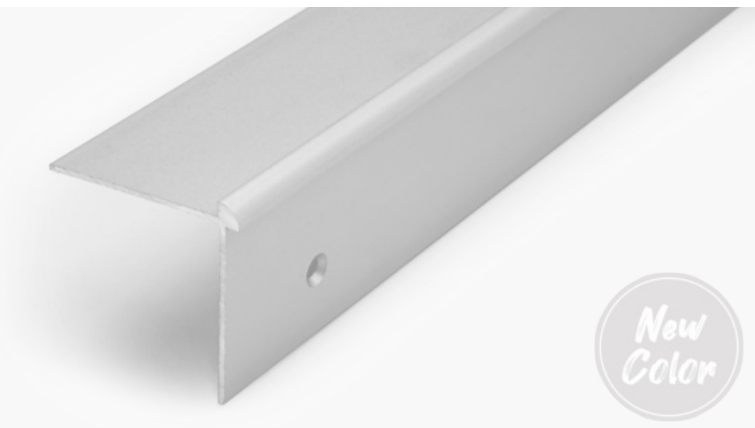


For the installation of drilled stair nosings, where the installation hole is covered by the floor covering, we recommend the countersunk screws DIN 7982 2.9 x 25mm article 58.20301. The screw head fits perfectly into the countersink so that the floor covering does not show through.

SHOP NOW



# Stair nosings



## Stair nosing 2,8mm for LVT floor coverings

153

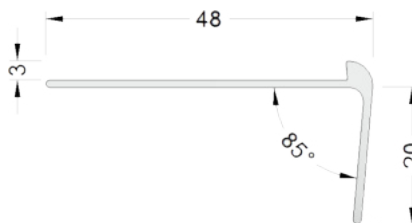
Stair nosing for vinyl design floorings, linoleum, PVC and cork up to 2,8mm height. The floor covering is attached to the particularly filigree edge of the profile. Drilled on both sides.

Designation	Color	Execution	Item number	Packing unit
Stair nosing 2,8mm	nature	drilled	11.11015	10 x 300 cm
Stair nosing 2,8mm	silver matt	drilled	11.11017	10 x 300 cm
Stair nosing 2,8mm	black matt	drilled	11.11019	10 x 300 cm

! For the installation of drilled stair nosings, where the installation hole is covered by the floor covering, we recommend the countersunk screws DIN 7982 2.9 x 25mm article 58.20301. The screw head fits perfectly into the countersink so that the floor covering does not show through.



# Stair nosings



## Stair nosing 3x20mm for linoleum

Stair nosing for linoleum, PVC and cork floor coverings up to 3mm height.  
With filigree edge.

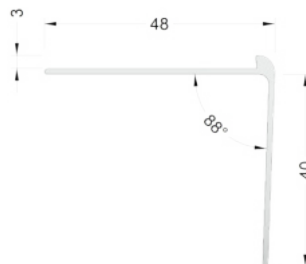
154

Designation	Color	Execution	Item number	Packing unit
Stair nosing 3x20mm	silver matt	drilled	11.11035	10 x 300 cm

SHOP NOW



# Stair nosings



## Stair nosing 3x40mm for linoleum

Stair nosing for linoleum, PVC and cork floor coverings up to 3mm height.  
With filigree edge.

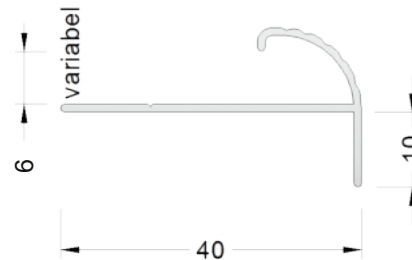
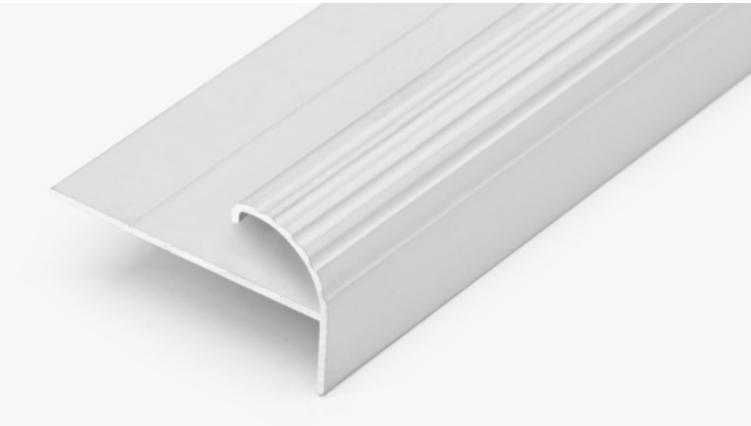
164

Designation	Color	Execution	Item number	Packing unit
Stair nosing 3x40mm	silver matt	drilled	11.11037	10 x 300 cm

SHOP NOW



# Stair nosings



## Vari stair nosing

For laying carpets on stairs and landings. The floor covering is permanently pinched by pressing the upper end together.

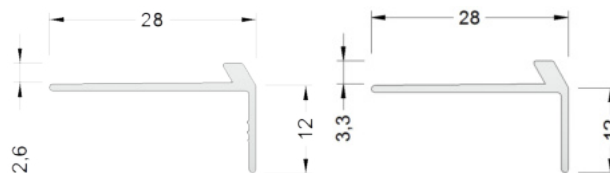
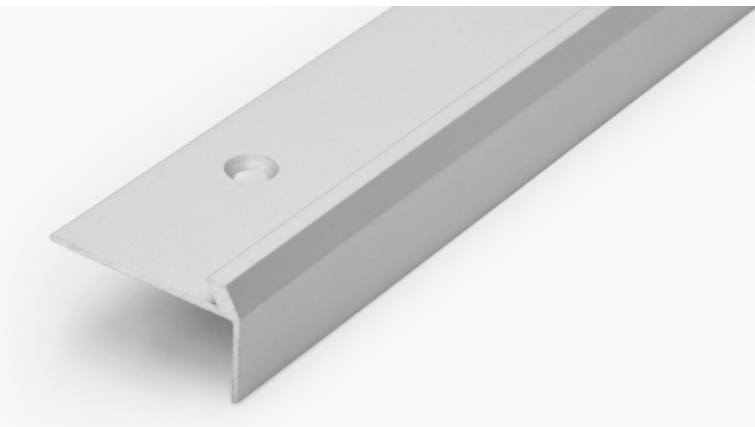
155

Designation	Color	Execution	Item number	Packing unit
Vari stair nosing	silver matt	drilled	11.11065	10 x 300 cm

SHOP NOW



# Stair nosings



## Stair nosing 12mm

Stair nosing for linoleum, PVC and cork floor coverings up to 2,6mm resp. 3,3mm height. With filigree edge.

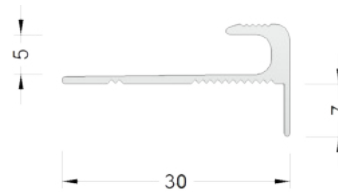
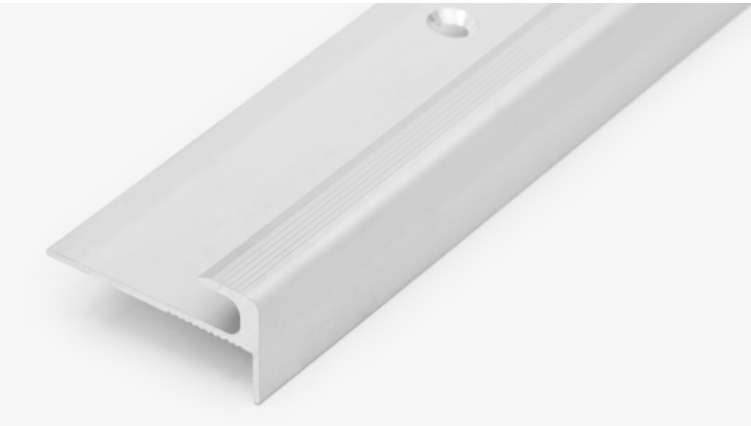
156

Designation	Color	Execution	Item number	Packing unit
Stair nosing 2,6x12mm	silver matt	drilled	11.11023	10 x 300 cm
Stair nosing 3,3x12mm	silver matt	drilled	11.11026	10 x 270 cm

SHOP NOW



# Stair nosings



## Stair nosing 5x7mm

Stair nosing with insert for floor coverings up to 5mm height.  
With fluted edge.

157

Designation	Color	Execution	Item number	Packing unit
Stair nosing 5x7mm	silver matt	drilled	11.11066	10 x 270 cm

SHOP NOW



# Carpet grippers



## Carpet grippers

Carpet grippers for stretching carpet.

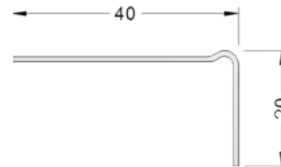
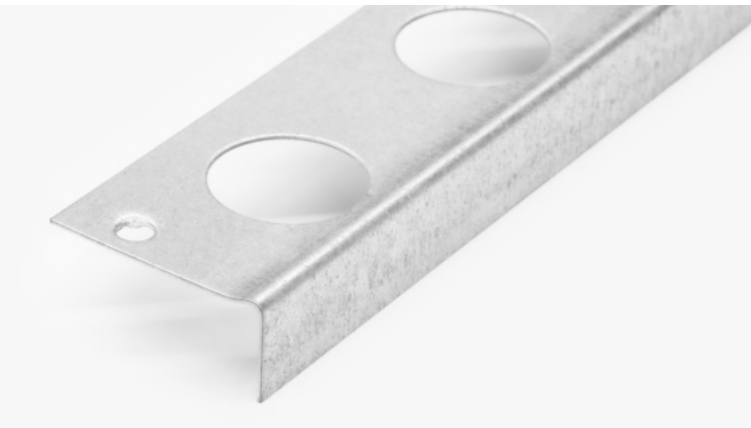
Designation	Execution	Nail height	Item number	Packing unit
Carpet grippers 2-rowed	2-rowed	4,8 mm	11.10010	100 x 152,4 cm
Carpet grippers 3-rowed	3-rowed	4,0 mm	11.10050	70 x 122,0 cm

SHOP NOW





# Metal angles



## Metal angles

Repair angles for repairing worn concrete treads in staircase renovation.

Designation	Color	Execution	Item number	Packing unit
Metal angle type S for concrete treads	metal	Type S 40x20 mm	11.11100	30 x 100 cm
Metal angle for wooden stairs	metal	40x38 mm	11.11110	25 x 100 cm

SHOP NOW



# Anti slipping grip tapes



## ROLL anti slipping grip tape

Premium, self adhesive nonslip grip tape, very durable, with excellent characteristics.

It can be applied onto most surfaces to provide anti slip protection and safety standards e.g. onto stairs, entrances, ramps, public areas, boats, sanitary areas, trucks and buses.

Color	Execution	Width	Item number	Roll length
Black	self-adhesive	50mm	14.11160	18 meter
Transparent	self-adhesive	50mm	14.11161	18 meter
White	self-adhesive	50mm	14.11162	18 meter
Red	self-adhesive	50mm	14.11163	18 meter
Green	self-adhesive	50mm	14.11164	18 meter
Grey	self-adhesive	50mm	14.11165	18 meter
Fluorescent (luminous)	self-adhesive	50mm	14.11166	18 meter
Blue	self-adhesive	50mm	14.11167	18 meter
Brown	self-adhesive	50mm	14.11168	18 meter
Grey (aqua safe, quality for bare foot areas)	self-adhesive	50mm	14.11169	18 meter
Neon yellow	self-adhesive	50mm	14.11171	18 meter
Safety color (black/yellow)	self-adhesive	50mm	14.11172	18 meter
Grey, coarse (aqua safe, quality for bare foot areas)	self-adhesive	50mm	14.11174	18 meter
Transparent (aqua safe, quality for bare foot areas)	self-adhesive	50mm	14.11175	18 meter

SHOP NOW





## Profile rack

Whether as a sales aid in specialist shops or in your warehouse, with the profile shelf rack we offer a variable solution for storing your flooring profiles clearly sorted.

The profile rack can be individually configured in width, height and depth and equipped for storing long or DIY profiles.

Price due to individual construction on request.

# Sales aids



Would you like to convince yourself of the quality of our flooring profiles, take a closer look at the profile and suit the dimensions and color of your floor covering?

We would be happy to send you a free sample of approx. 4 cm.

Do you need larger quantity for sampling? No problem! To do this, simply contact us.

You will find our complete range of floor profiles in the ROLL "Floor profiles" collection case.

See for yourself and be inspired by the shapes and colors!

## Samples case ROLL flooring profiles

The Roll flooring profiles range consists of 65 different geometries and is presented in the ROLL sample case.

Designation	Item number	Packing unit
Sample case	11.00001	1 piece

# General about ROLL flooring profiles

## Aluminum flooring profiles

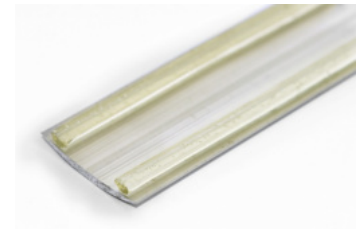
Roll flooring profiles made of aluminum (AlMgSi0.5 F22) are manufactured in ISO 9001 certified pressing plants.

After processing, the extruded flooring profiles are coated with an anodized layer to achieve the desired appearance and surface protection. The colors are silver glossy (with previous polishing), silver matt, sand matt, stainless steel matt or black.

Before anodizing, the flooring profiles are drilled and countersunk in 150mm intervals. The profiles are usually screwed with Torx countersunk screws 3x30mm (or 2.9x25mm) and thus offer a firm connection to the surface.

Alternatively, undrilled profiles are available with self-adhesive, permanently elastic cords. Self-adhesive profiles are a quick installation method that does not require any drill holes.

Roll flooring profiles are available in lengths of 300cm, 270cm or 250cm and in packs of 10 bars.







Visit us on social media



Albstrasse 12  
72820 Sonnenbühl  
Germany

Phone +49 (0) 7128/92800  
Fax +49 (0) 7128/928011  
Email [info@roll-gmbh.de](mailto:info@roll-gmbh.de)

[www.roll-gmbh.de](http://www.roll-gmbh.de)